

for sale

£255,000



Lordswood Close Wootton Northampton NN4 6BP

Offered to the market with **NO ONWARD CHAIN** is this three-bedroom family home which is ideal first time buy, or investment purchase. The property is ideally situated at the cul-de-sac in the highly desired area of Wootton Fields.

Lordswood Close Wootton Northampton NN4 6BP

Entrance Hall

Double glazed door to the front aspect, wall mounted radiator and door leads off to lounge.

Lounge

Double glazed bay window to the front aspect, stairs rise to the first floor landing, wall mounted radiator.

Kitchen

Fitted kitchen with a range of wall and base level units. Stainless steel sink and drainer set into work surface with complimentary tiling to splash back areas. Four ring gas hob with cooker hood over, oven. Space for fridge/freezer and plumbing for washing machine. UPVC double glazed window and door to the rear aspect.

First Floor Landing

Stairs rise from living room, airing cupboard, loft access, and doors leads off to three bedrooms and family bathroom.

Bedroom One

Double glazed window to the front aspect, wall mounted radiator.

Bedroom Two

Double glazed window to the front aspect, wall mounted radiator.

Bedroom Three

Double glazed window to the front aspect, built in storage, and wall mounted radiator.

Family Bathroom

Three piece white suite comprising panelled bath with shower over, low level flush w.c and wash hand basin with tiling to splash back areas. Wall mounted radiator, extractor fan and UPVC opaque double glazed window to the rear elevation.



Outside

Front Garden

Lawned area with some mature trees and driveway providing off road parking.

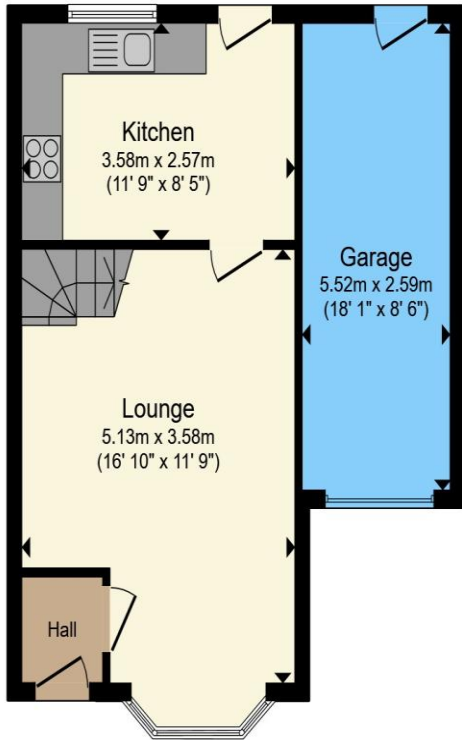
Rear Garden

Mainly laid to lawn with paved patio area, retaining timber fencing and wooden shed.

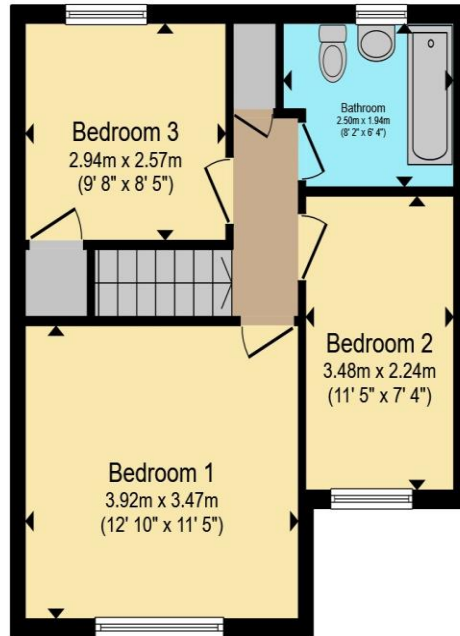
Garage

Single garage with up and over door and courtesy door to the rear garden.





Ground Floor



First Floor

Total floor area 85.3 m² (918 sq.ft.) approx

This floor plan is for illustrative purposes only. It is not drawn to scale. Any measurements, floor areas (including any total floor area), openings and orientation are approximate. No details are guaranteed, they cannot be relied upon for any purpose and they do not form part of any agreement. No liability is taken for any error, omission or misstatement. A party must rely upon its own inspection(s). Powered by www.propertybox.io



To view this property please contact Connells on

T 01604 706644
E woottonfields@connells.co.uk

11 Tudor Court Wootton Hope Drive Wootton
 NORTHAMPTON NN4 6FF

Property Ref: WFL408707 - 0002

Tenure:Freehold EPC Rating: C

Council Tax Band: C

view this property online connells.co.uk/Property/WFL408707



1. MONEY LAUNDERING REGULATIONS Intending purchasers will be asked to produce identification documentation at a later stage and we would ask for your co-operation in order that there will be no delay in agreeing the sale. 2. These particulars do not constitute part or all of an offer or contract. 3. The measurements indicated are supplied for guidance only and as such must be considered incorrect. Potential buyers are advised to recheck measurements before committing to any expense. 4. We have not tested any apparatus, equipment, fixtures, fittings or services and it is in the buyers interest to check the working condition of any appliances.

Connells Residential is registered in England and Wales under company number 1489613, Registered Office is Cumbria House, 16-20 Hockliffe Street, Leighton Buzzard, Bedfordshire, LU7 1GN. VAT Registration Number is 500 2481 05.

see all our properties at www.connells.co.uk | www.rightmove.co.uk | www.zoopla.co.uk