



Ebbw Road, Caldicot

4 Bedrooms
1 Bathrooms
2 Receptions

£425,000



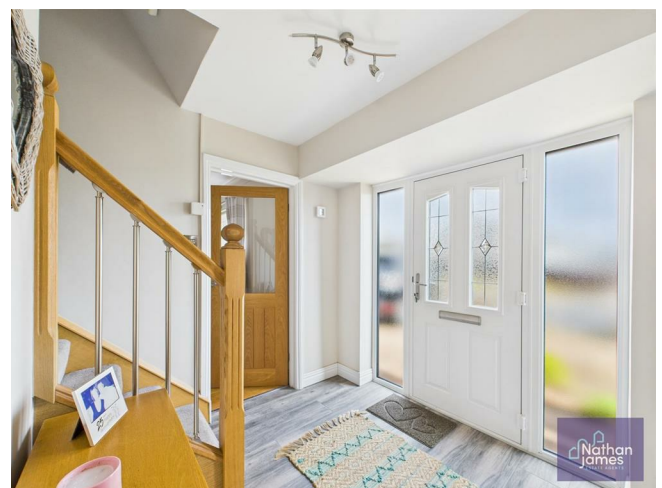
Nestled on Ebbw Road in the charming town of Caldicot, this delightful detached house offers a perfect blend of comfort and space for family living. With four well-proportioned bedrooms, this property is ideal for those seeking a home that accommodates both relaxation and practicality.

Upon entering, you are greeted by two inviting reception rooms, providing ample space for entertaining guests or enjoying quiet family evenings. The layout of the house promotes a warm and welcoming atmosphere, making it easy to envision creating lasting memories within its walls.

The property features a well-appointed bathroom, ensuring convenience for all residents. The bedrooms are designed to be versatile, allowing for personalisation to suit your individual needs, whether it be for a growing family or a home office. The property also benefits from a garage and plentiful driveway parking. The rear garden is beautifully proportioned and fully enclosed with plenty of seating spots and areas of interest.

Situated in Caldicot, this home benefits from a friendly community and is conveniently located near local amenities, schools, and parks, making it an excellent choice for families. The surrounding area offers a blend of countryside charm and urban convenience, providing a peaceful retreat while remaining well-connected to nearby towns and cities.

This detached house on Ebbw Road is not just a property; it is a place where you can truly make a home. With its spacious layout and prime location, it presents an exceptional opportunity for those looking to settle in a vibrant and welcoming community. Don't miss the chance to view this lovely home and envision your future here.



Kitchen
11'1x17'9

Living Room
10'4x23'3

Conservatory
13'8x8'7

Hallway
7'11x6'8

Cloakroom
2'11x7

Bedroom One
10'4x14'6

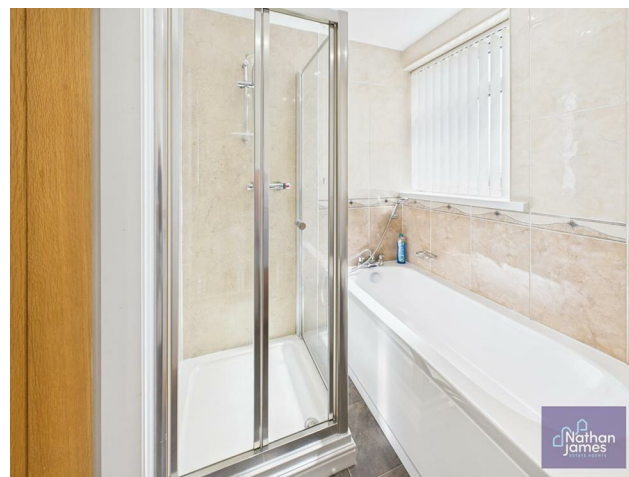
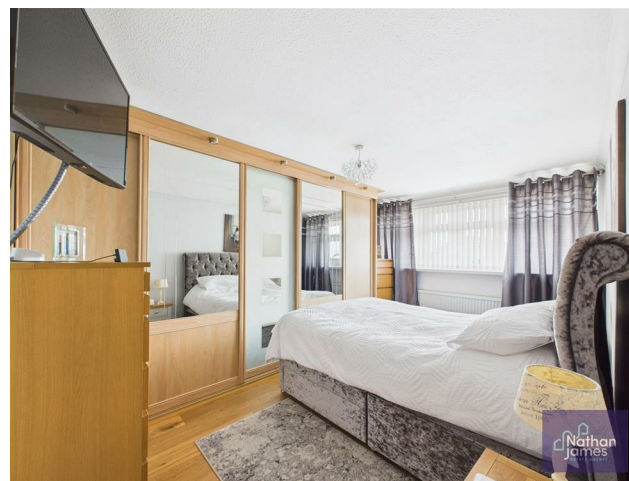
Bedroom Two
13'3x8'4

Bedroom Three
8'5x8'5

Bedroom Four/ Office
8'2x6'8

Bathroom
5'5x7'3

Porch
3'9x7'4





Floor 0

Approximate total area⁽¹⁾
1322 ft²

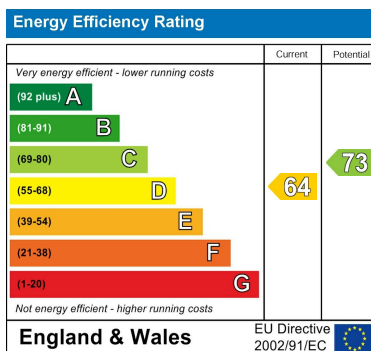


Floor 1

(1) Excluding balconies and terraces

Calculations reference the RICS IPMS 3C standard. Measurements are approximate and not to scale. This floor plan is intended for illustration only.

GIRAFFE360



8 Newport Road
Caldicot
Monmouthshire
NP26 4HX
01291 421600

nj@nathanjamesestateagents.co.uk
nathanjamesestateagents.com