



## Queen Elizabeth Street, SE1

£375,000

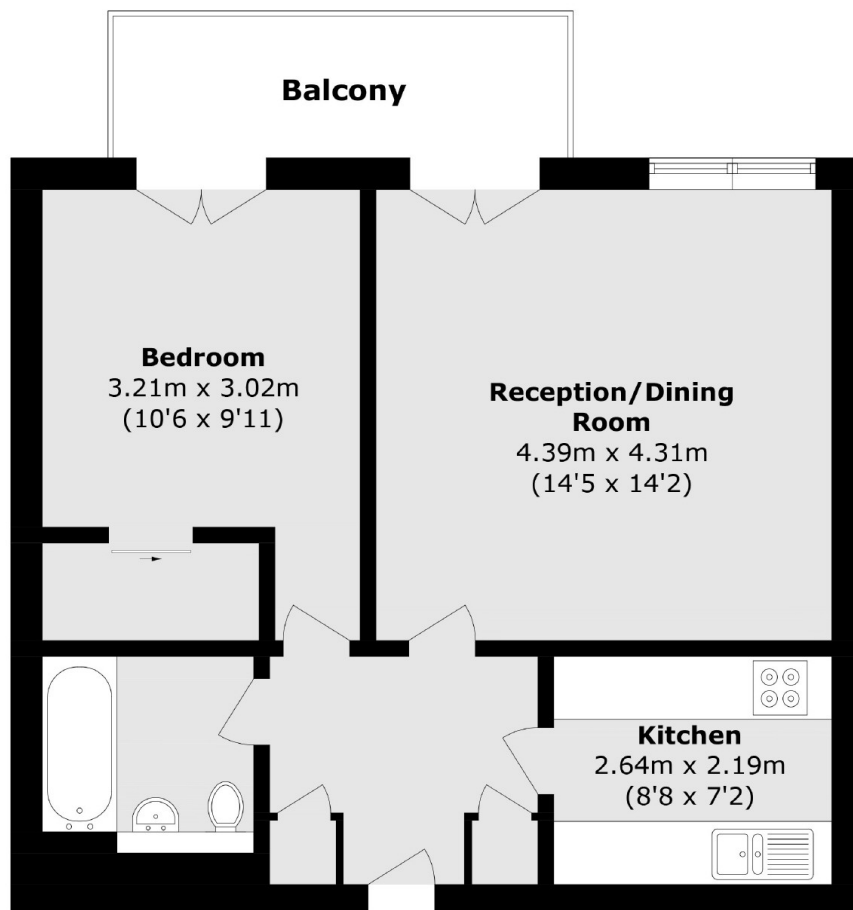
Located in the heart of Shad Thames, this bright and airy one double bedroom flat is immaculately presented and has a large living space, separate kitchen, ample storage and concierge facilities.

The Circle is surrounded by the shops, cafés restaurants and delis of Shad Thames and is only 0.4 miles from London Bridge station offering excellent transport links to anywhere in London.

### Features

- One Double Bedroom Flat
- Bright And Airy
- Private Balcony
- Concierge Facilities
- Excellent Condition
- Valid EWS1 Form
- Allocated Parking Space

# Queen Elizabeth Street, London, SE1



Total area (approx.): 49.5 sq. m (532.8 sq. ft)

Balcony area (approx.): 5.8 sq. m (62.4 sq. ft)