



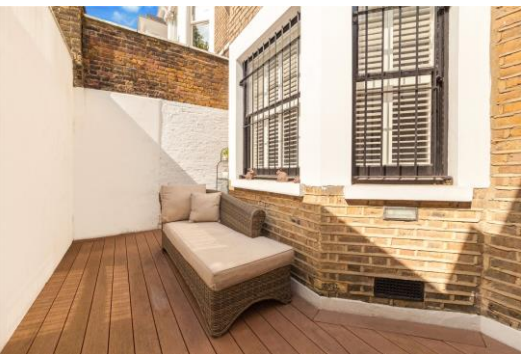
Lauderdale Road

London, W9

£4,000 per month
(£923.08 per week)

A lovely bright & contemporary three bedroom flat in this fantastic building in the heart of W9. Immaculate throughout with a bright reception room, contemporary separate kitchen, three good size bedrooms & moments to Warwick Avenue tube. EPC D

CHESTERTONS



Lauderdale Road

London, W9

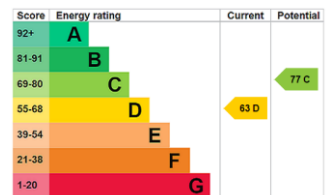
- Stylish Period Conversion
- Three Bedrooms & Two Stylish Bathrooms
- Large Reception With Wooden Floors & Separate Modern Kitchen
- Moments To Warwick Avenue Station



A lovely bright & contemporary three bedroom flat in this fantastic building in the heart of W9. Immaculate throughout with a bright reception room, contemporary separate kitchen, three good size bedrooms & moments to Warwick Avenue tube.

Little Venice has a village feel to it. Local residents will stop each other in the street for a chat, there is one of the best fruit & veg shops in London and the Canal boats are a real attraction. The proximity to central London is very good as well as getting to Heathrow.

Minimum Term: months
Deposit Required: 5 weeks
Local Authority: City of Westminster
Council Tax Band: F
EPC Rating: D
Unfurnished

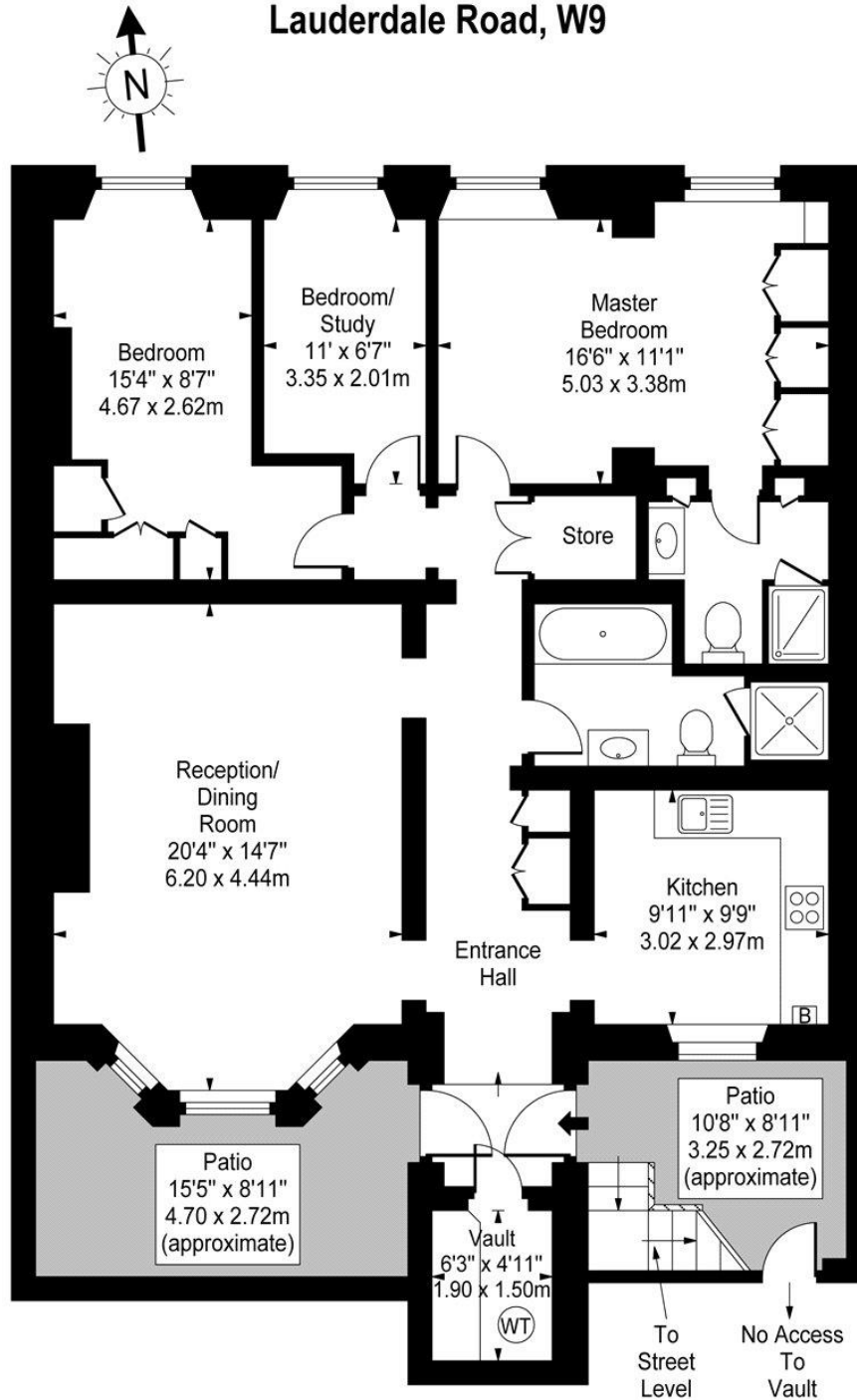


Chestertons Little Venice Lettings

26 Clifton Road
 Maida Vale
 London
 W9 1SX
 littlevenicelettingsusers@chestertons.co.uk
 02072662369
 chestertons.co.uk

Additional tenant charges apply (fees apply to non-AST tenancies only)
 Tenancy Agreement Fee: £300
 References per Tenant/Guarantor: £60
 Inventory check (approx. £100 – £250 inc. VAT)
 chestertons.co.uk/property-to-rent/applicable-fees

Lauderdale Road, W9



Lower Ground Floor

Approx Gross Internal Area **1186 Sq Ft - 110.18 Sq M**
(Including Vault)

For Illustration Purposes Only - Not To Scale
www.goldlens.co.uk
Ref. No. 005283K