



PM ESTATES

Property Sales & Lettings



Grosvenor House

Bishops Stortford, Hertfordshire, CM23 5AG

£1,400_{PCM}

Grosvenor House

Bishops Stortford, Hertfordshire, CM23 5AG

Overview

- Split Level Apartment
- Three Double Bedrooms
- Large Living Area
- Fully Fitted Kitchen
- Family Sized Tiled Bathroom
- Popular Development
- Integrated Appliances
- Offered Furnished
- Close to Local Amenities
- On Street Parking
- Energy Rating: E
- Council Tax Band: C



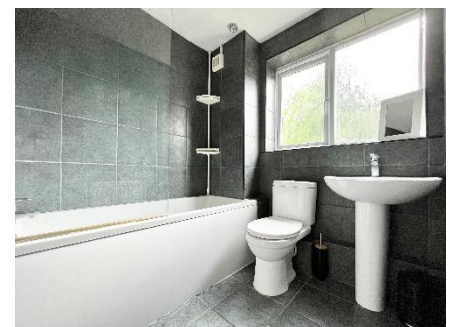
Description

PM Estates are pleased to introduce this 3-bedroom split level apartment within the popular Grosvenor House Development within the Stortford Hall Park area of Bishops Stortford.

This apartment is well proportioned throughout and boasts a separated kitchen and living area, the latter featuring a large feature window which allows plenty of natural light to proceed and fill the room.

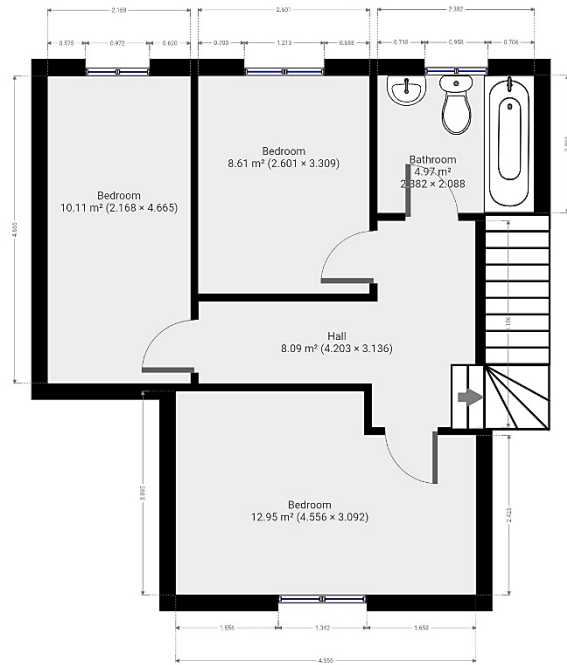
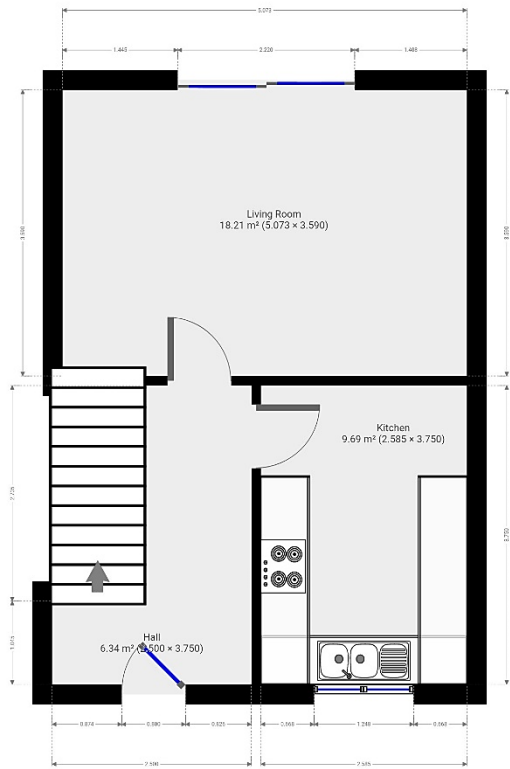
In addition to having three double bedrooms, the property has a fully tiled family sized bathroom complete with white suite and shower unit.

The development is kept to a high standard with access to communal gardens with the benefit of having parking on-site. Grosvenor House is a 10-minute walk to the mainline rail station which offers direct services to London Liverpool Street, Cambridge and Stansted Airport.



Score	Energy rating	Current	Potential
92+	A		
81-91	B		
69-80	C		
55-68	D		63 D
39-54	E	42 E	
21-38	F		
1-20	G		

Floor Plan



7 Riverside Walk, South Street, Bishop's Stortford, Herts CM23 3AG

Tel: 01279 654646

Email: info@pm-estates.co.uk

www.pm-estates.co.uk

PM Estates wish to advise prospective purchasers that we have not checked the services or appliances. The sales particulars have been prepared as a guide only; any floor-plan or map is for illustrative purposes only. PM Estates, for themselves and for the vendors or lessors of this property whose agents they are give notice that: the particulars have been produced in good faith; do not constitute any part of a contract; no person in the employment of PM Estates has any authority to make or give any representation of warranty in relation to this property.