



STERNHOLD AVENUE, SW2

£650,000

- Two double bedrooms
- Share of freehold
- Close to tooting common
- In excess of 1,200 sqft
- Telford park location
- Energy rating: C



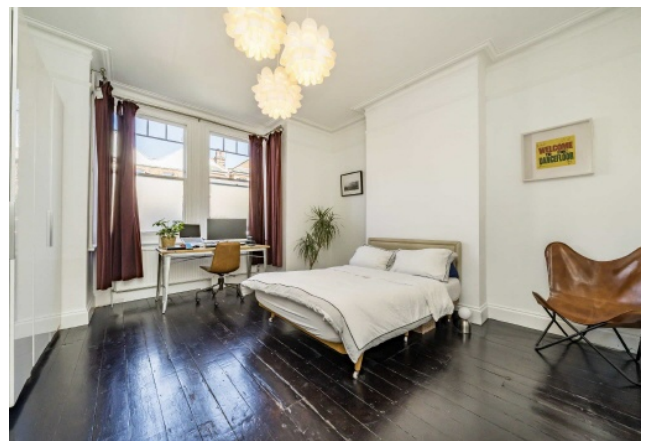


ABOUT THE HOME

This well presented two double bedroom, ground floor maisonette is set just moments from Tooting Common .The property spans over 1,200sqft, and benefits from having its own front door, as well as a share of the freehold.

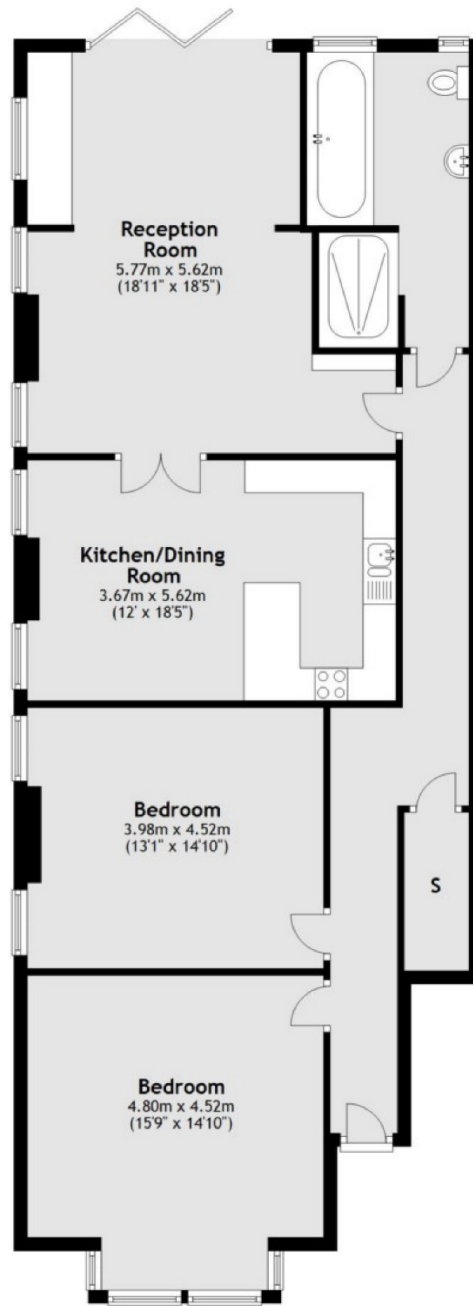
To the front are two generous bedrooms with ample storage, and to the rear a bright kitchen and reception room. Bi-fold doors then lead out to the private South - facing garden.

Located on Sternhold Avenue in the Telford Park Conservation area it is well placed for easy access to both Balham and Streatham Hill. The green open spaces of Tooting Bec Common are just at the end of the road and the shops, restaurants and supermarkets in Balham are within close proximity. There are excellent transport links into the city, including mainline and underground services and there are also local bus routes nearby.





Ground Floor



Total area: approx. 117.5 sq. metres (1264.5 sq. feet)

JACKSONS BALHAM

8-11 Balham Station Road,
London, SW12 9SG
Sales: 020 8675 6555
Lettings: 020 8675 6565

Energy Rating: We aim to make our particulars both accurate and reliable. However they are not guaranteed; nor do they form part of an offer or contract. If you require clarification on any points then please contact us, especially if you're traveling some distance to view. Please note that appliances and heating systems have not been tested and therefore no warranties can be given as to their good working order.