



JUBILEE

CHAPELHOUSE



Set inside the red brick exterior of a former 19th-century chapel, this contemporary home stands in the heart of the historical village of Woodeaves and is a true labour of love. Blending stylish, luxurious design with original features, Jubilee Chapelhouse boasts a serious wow factor.

Surrounded by the rural Staffordshire landscape, this hilltop village, enjoys stunning views. Within the village itself, you'll find a post office, primary school and several traditional pubs. Close by, you also have easy access to pretty hamlets, charming villages and the town of Eccleshall.

From Eccleshall Road, pull onto the electric gated driveway along the side elevation, where there's a lawned garden, a porcelain paved rear patio area and off-road parking and turning space for two cars.



"This showstopping converted chapel, where old meets new, takes pride of place in the sleepy village of Woodeaves"





From the side entrance, access the lounge, dining and kitchen area. This imposing space, with a beautiful herringbone vinyl flooring flowing throughout, will certainly stop you in your tracks. While the right side of the room is dedicated to entertaining and relaxing with friends and family, the left side is where the culinary magic happens.

Your eyes are immediately drawn to the magnificent, vaulted ceiling and circular, stained-glass window, giving a nod to the building's previous life as a chapel. The space is bathed in natural light that streams through from the huge Velux window and dual aspect windows and is overlooked by a glass-fronted mezzanine balcony. What's great about this huge space is the scope it has for personalising it to your own unique taste.

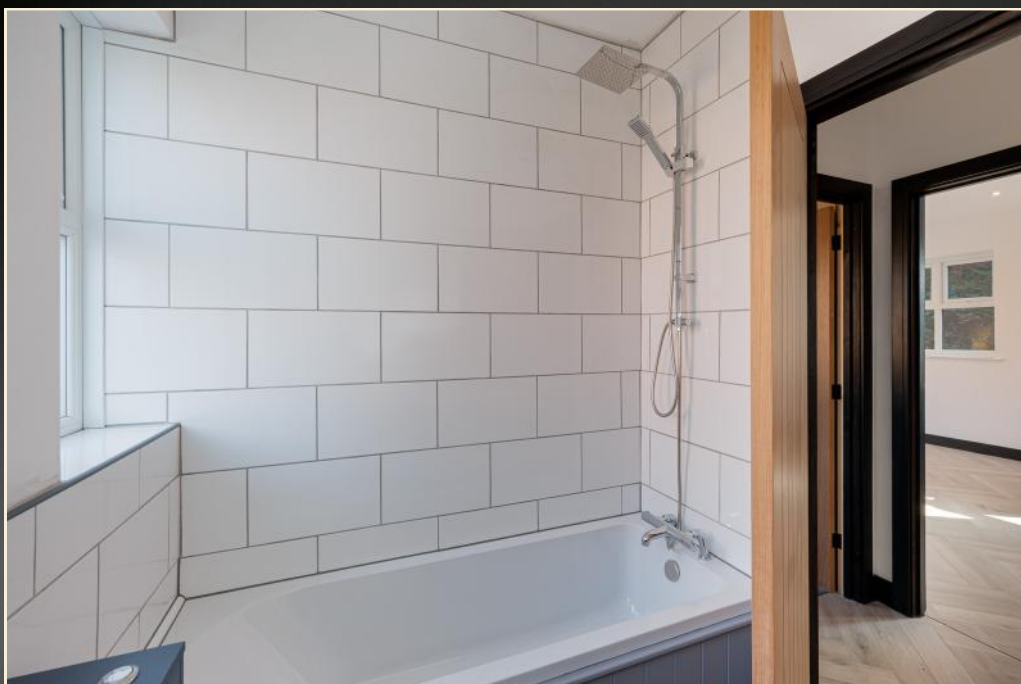




Turn your gaze to the left and you'll see a contemporary, bespoke kitchen, complete with quartz-topped island and units and seamlessly integrated AEG appliances, including an electric oven with microwave above, induction hob with central extractor, washing machine, fridge, freezer and drinks cooler. Adjacent to the kitchen is a convenient storeroom ideal for concealing a washer and dryer.

Take a left after the store and step into Bedroom Four, a characterful space with a large, arched window looking onto the rear side elevation. An ensuite shower room enhances the room and eases the morning family rush.

Return through the kitchen to enter the ground floor bathroom, which serves both Bedroom Two and Three. Straight ahead is Bedroom Three, overlooking the side elevation. Take a right into Bedroom Two, where the herringbone flooring continues. Open the French doors and step outside onto the elegant porcelain paved patio area, perfect for unwinding on balmy evenings with a glass of your favourite tippie.





Make your way back to the living area and walk upstairs to the first floor. The unconventional layout of The Chapelhouse adds to its lovable eccentricities. You're greeted with a secondary living area, flanked by the mezzanine balcony and filled with light from two Velux windows. This is a versatile space which lends itself to an office, home gym or a reading room.

Where the space narrows, turn right into hallway of the Master Bedroom. Take another right into the beautifully designed ensuite shower room, a private retreat where you can wash away any stresses of the day.

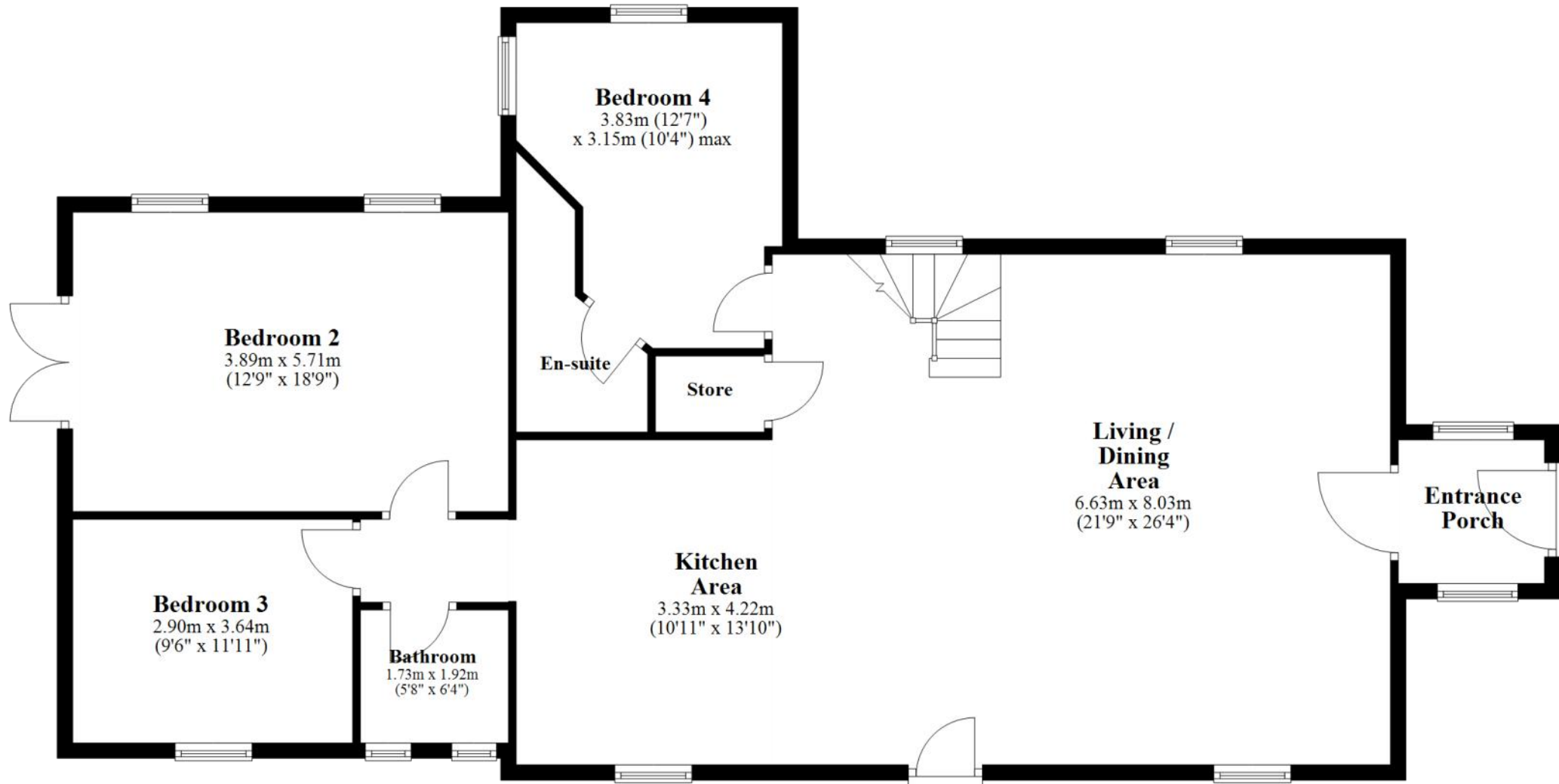


Continue through to the bedroom, yet another jewel in the crown of Jubilee Chapelhouse. Dual aspect Velux windows draw plenty of natural light in and the exposed beamed vaulted ceiling gives it an air of grandeur.

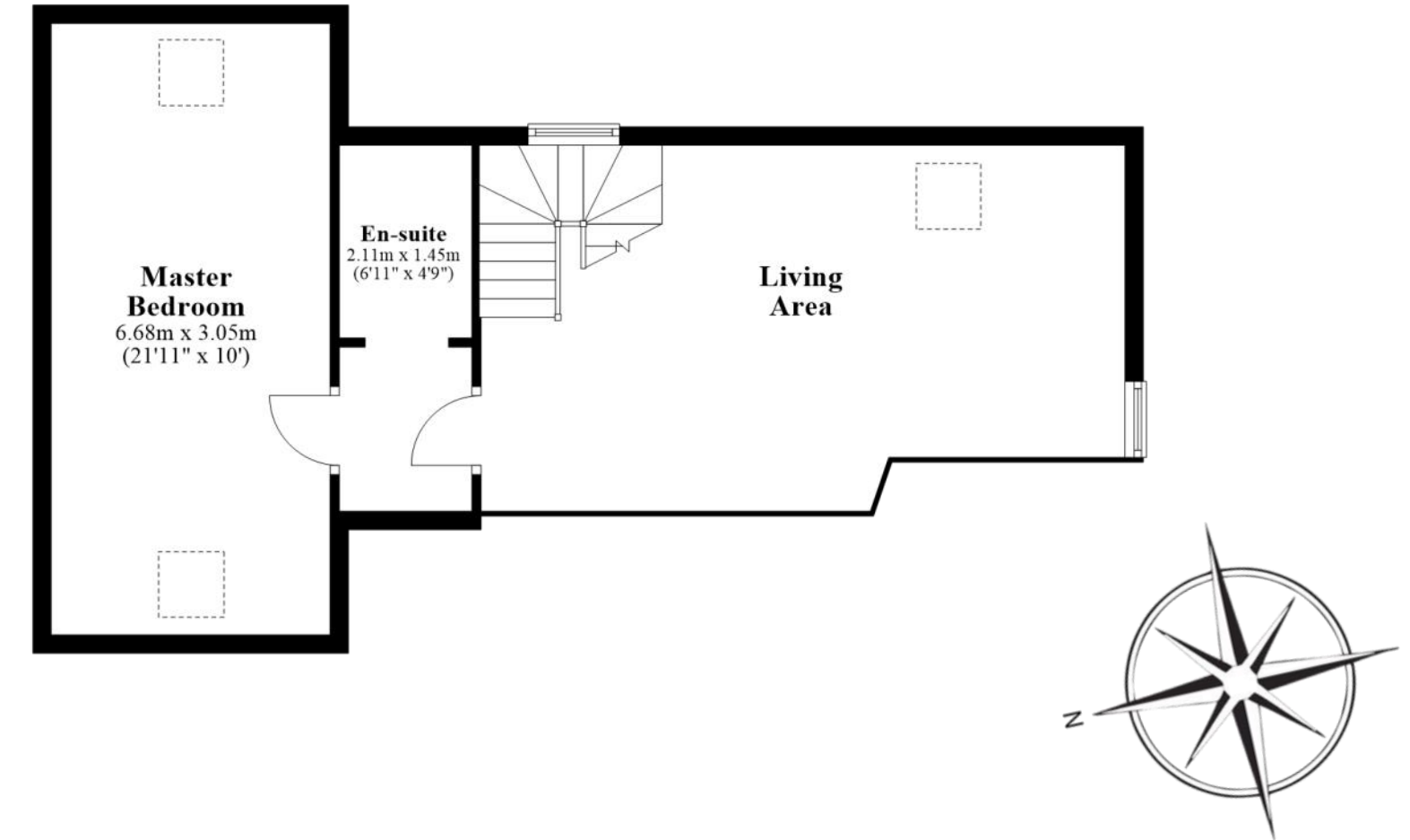


Closing the door behind you, the burning question is...

Ground Floor



First Floor



...How long before I can call this property my home?



JUBILEE
CHAPELHOUSE



Contact Adam for more information

01538 493333

sales@addisonmead.co.uk

Addison Mead
— EXCLUSIVE —