

Sinclair Road, W14

£375,000

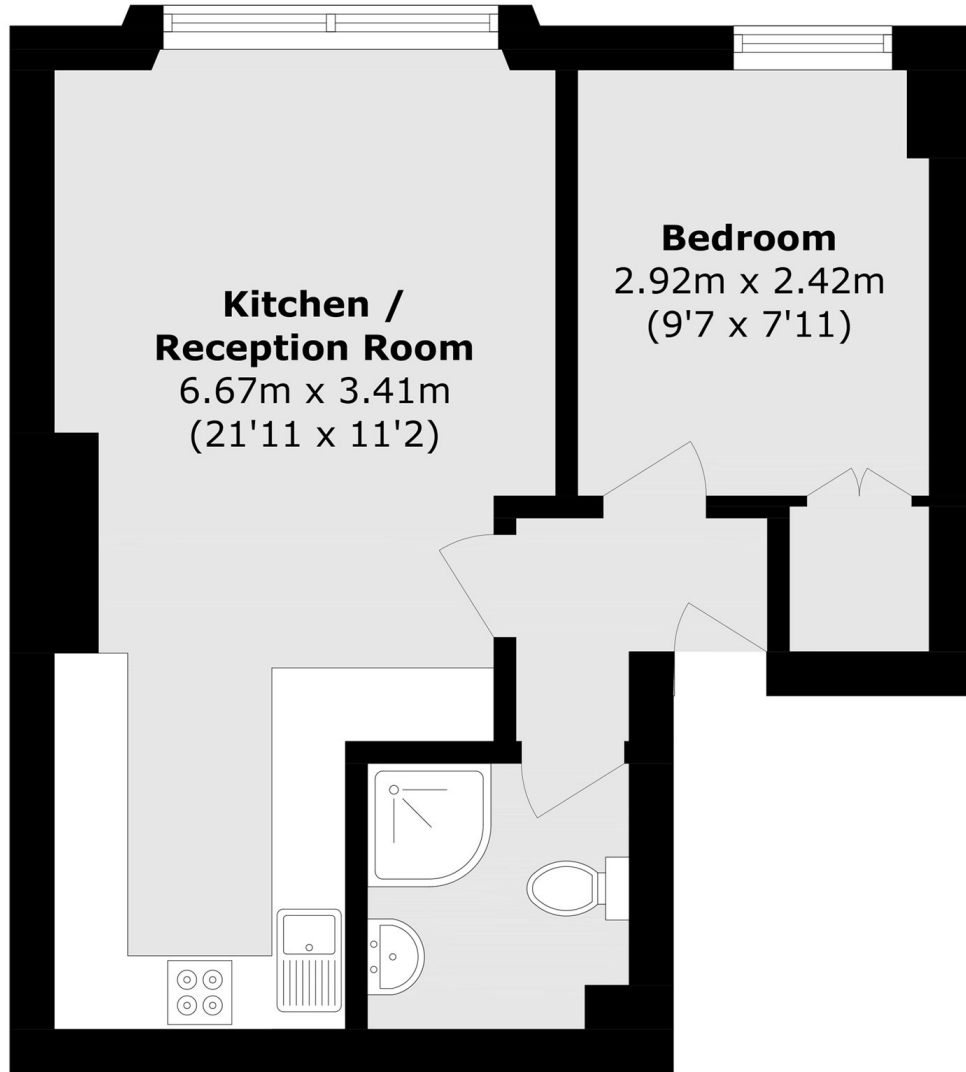
A one bedroom apartment on Sinclair Road. This property is located on the first floor, with the benefit of large sash windows and offered with no onward chain- perfect for an investment or first home.

Sinclair Road is a residential street situated west of Holland Park and runs through the Brook Green conservation area. The local amenities and the Westfield Shopping Centre are nearby.

Features

- Share Of Freehold
- No Onward Chain
- Large Sash Windows
- Residents Parking
- Westfields Shopping Centre
- Brook Green Conservation

Sinclair Road, London, W14



Total area (approx.): 33.9 sq. m (364.8 sq. ft)