



**Connells**

Locks Meadow  
Dormansland Lingfield



### Property Description

Situated along a quiet road within the picturesque village of Dormansland, this beautifully presented three-bedroom detached family home offers stylish and spacious accommodation throughout and is available with the added benefit of no onward chain.

A standout feature of the home is the impressive contemporary extended kitchen and living space, perfectly designed for both entertaining and everyday family life. Boasting vaulted ceilings, skylights and bi-fold doors opening onto the garden, the space is flooded with exceptional natural light whilst creating a seamless indoor-outdoor flow. The kitchen itself is finished to a high standard with a central breakfast bar and ample space for dining and socialising.

Further accommodation includes a separate utility room and a dedicated study/home office, providing the ideal workspace for hybrid or home working.

The property has been finished to a high specification throughout, including a luxurious contemporary bathroom and tasteful interiors that allow any purchaser to move straight in and enjoy.

Externally, the home benefits from a mature, private and beautifully landscaped wrap-around garden, creating a wonderful setting for relaxing or entertaining during the warmer months. A driveway and double garage provide excellent parking and storage

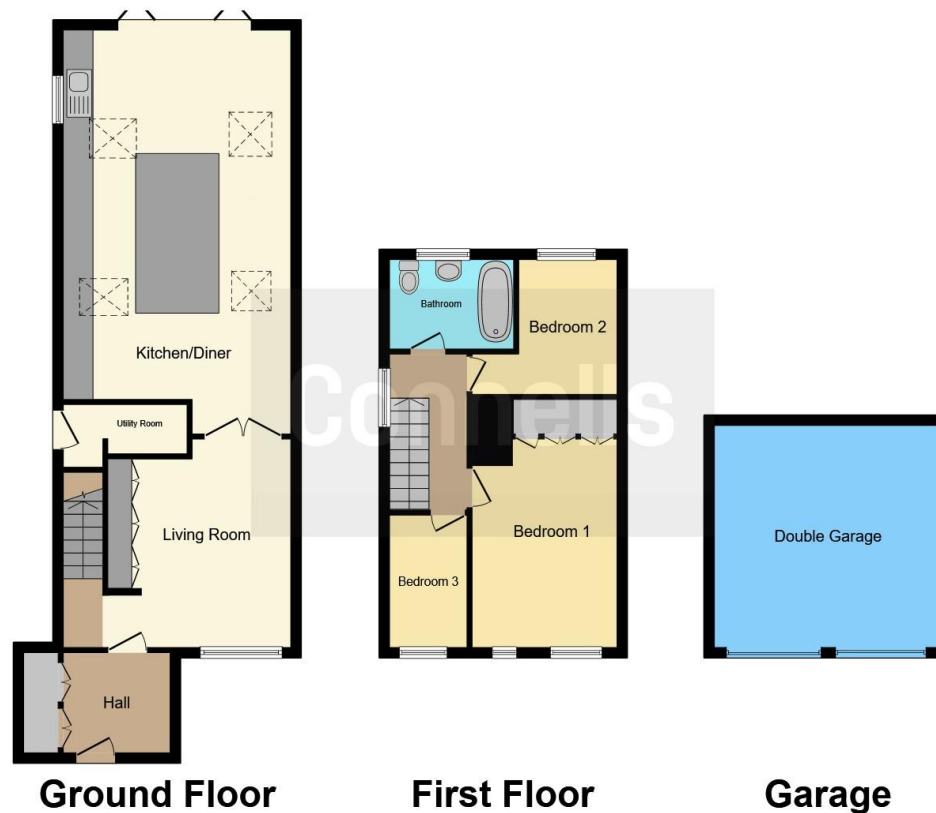
solutions.

Located within close proximity to highly regarded schools and surrounded by the charm of village living, this exceptional home combines modern family living with a peace









This floor plan is for illustrative purposes only. It is not drawn to scale. Any measurements, floor areas (including any total floor area), openings and orientation are approximate. No details are guaranteed, they cannot be relied upon for any purpose and they do not form part of any agreement. No liability is taken for any error, omission or misstatement. A party must rely upon its own inspection(s). Powered by [www.focalagent.com](http://www.focalagent.com)

To view this property please contact Connells on

**T 01342 325 911**  
**E [eastgrinstead@connells.co.uk](mailto:eastgrinstead@connells.co.uk)**

90 London Road  
 EAST GRINSTEAD RH19 1EP

EPC Rating: D Council Tax  
 Band: E

Tenure: Freehold

**view this property online [connells.co.uk/Property/EGR405695](http://connells.co.uk/Property/EGR405695)**



1. MONEY LAUNDERING REGULATIONS Intending purchasers will be asked to produce identification documentation at a later stage and we would ask for your co-operation in order that there will be no delay in agreeing the sale. 2. These particulars do not constitute part or all of an offer or contract. 3. The measurements indicated are supplied for guidance only and as such must be considered incorrect. Potential buyers are advised to recheck measurements before committing to any expense. 4. We have not tested any apparatus, equipment, fixtures, fittings or services and it is in the buyers interest to check the working condition of any appliances.

Connells Residential is registered in England and Wales under company number 1489613, Registered Office is Cumbria House, 16-20 Hockliffe Street, Leighton Buzzard, Bedfordshire, LU7 1GN. VAT Registration Number is 500 2481 05.

**See all our properties at [www.connells.co.uk](http://www.connells.co.uk) | [www.rightmove.co.uk](http://www.rightmove.co.uk) | [www.zoopla.co.uk](http://www.zoopla.co.uk)**

Property Ref: EGR405695 - 0006