



## Belle Vue Road, Old Basing – RG24 7JP

£475,000 Freehold

3 BEDROOMS • CHAIN FREE • SOUTHERLY FACING GARDEN • VILLAGE LOCATION • OFF ROAD  
PARKING • WALKING DISTANCE TO BUS ROUTES

01256 321777

[www.thepropertyexplorer.co.uk](http://www.thepropertyexplorer.co.uk)

the property  
**explorer**

A rare opportunity to acquire a beautifully presented three-bedroom bungalow, ideally positioned within the highly sought-after village of Old Basing. This attractive home offers generous and versatile living space, centred around a spacious lounge and dining area featuring a charming log burner, creating a warm and inviting focal point. The impressive conservatory, measuring approximately 23'11" x 11'1", provides an excellent additional reception area with direct access to the private, southerly facing rear garden, which enjoys a high degree of privacy.

Council Tax band: D

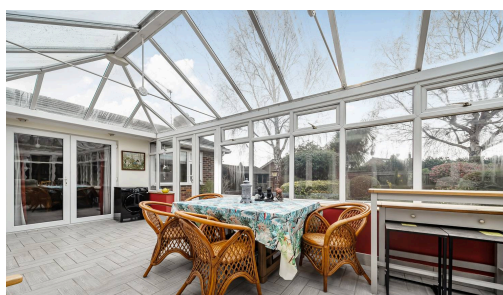
Tenure: Freehold

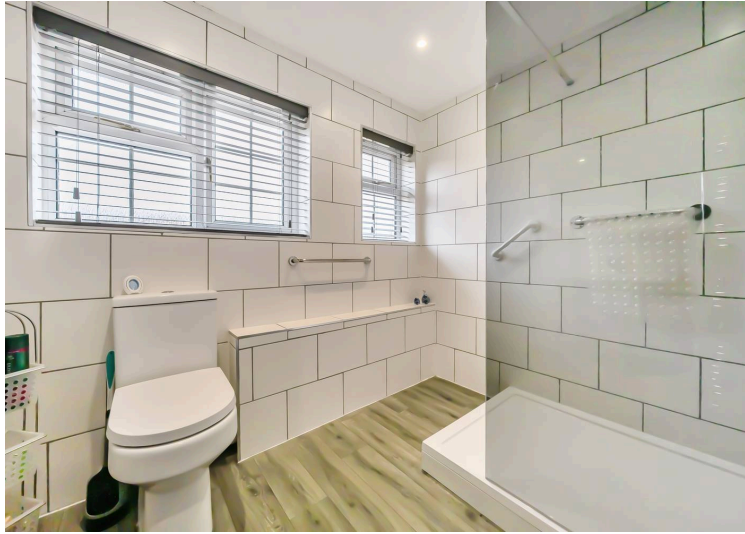
EPC Energy Efficiency Rating: D

EPC Environmental Impact Rating: D



- 3 BEDROOMS
- CHAIN FREE
- SOUTHERLY FACING GARDEN
- VILLAGE LOCATION
- OFF ROAD PARKING
- WALKING DISTANCE TO BUS ROUTES





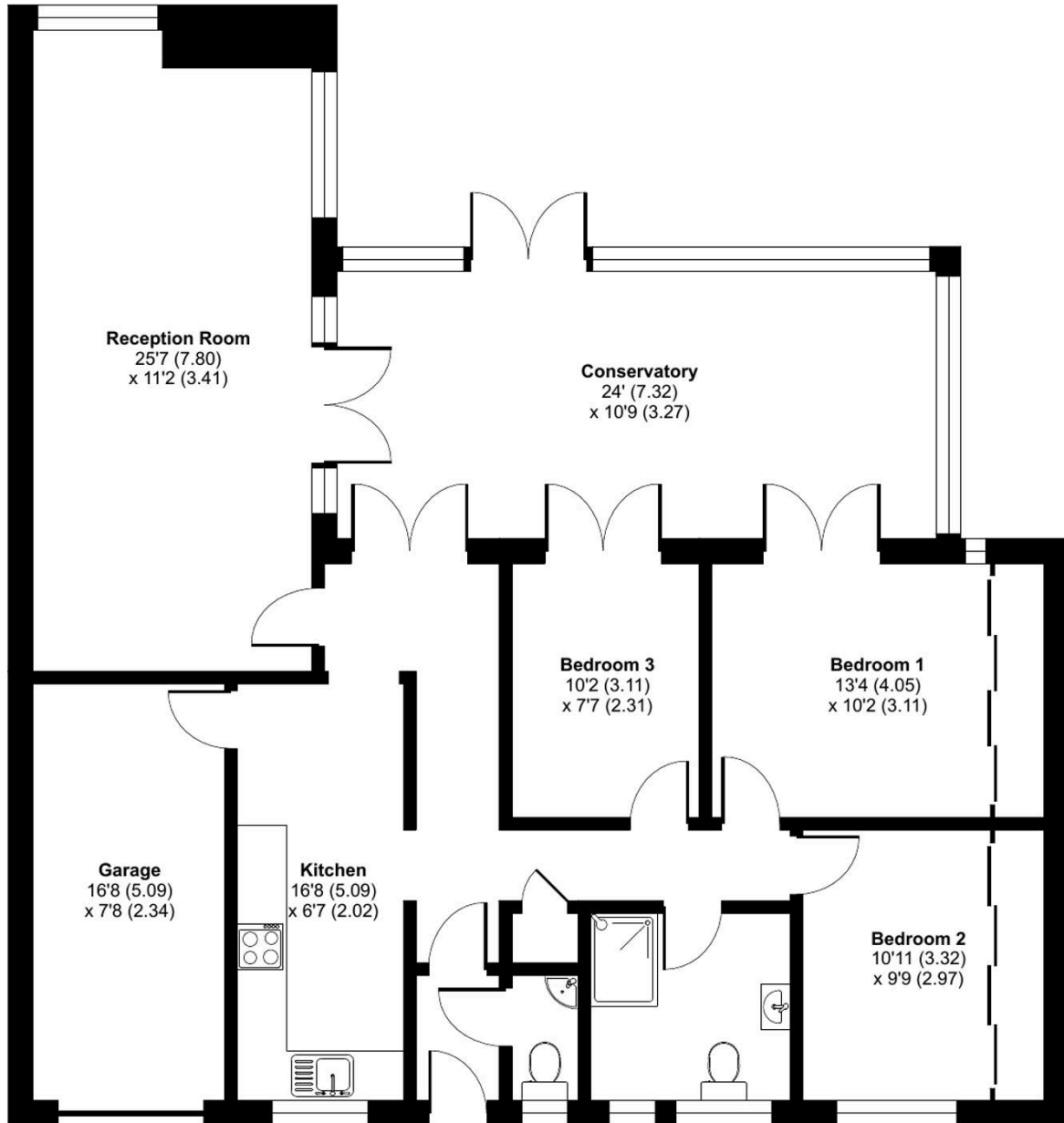
# Belle Vue Road, Old Basing, Basingstoke, RG24

Approximate Area = 1251 sq ft / 116.3 sq m

Garage = 127 sq ft / 11.7 sq m

Total = 1378 sq ft / 128 sq m

For identification only - Not to scale



**GROUND FLOOR**



Floor plan produced in accordance with RICS Property Measurement 2nd Edition, Incorporating International Property Measurement Standards (IPMS2 Residential). © nichecom 2026. Produced for Property Explorer. REF1435905