

**Danesway Molescroft Beverley HU17 7JQ**

£400,000

4 2 2



REFERENCE BA0665 This is a rare opportunity to purchase a property within this pleasant and sought after location that falls within Molescroft School catchment. The property presents well and offers well proportioned family accommodation throughout, with two large reception rooms and kitchen/breakfast room to the ground floor along with a useable utility room and ground floor cloakroom. The first floor offers two double and two good sized single bedrooms with and ensuite shower room to the master bedroom as well as the family bathroom. Outside the rear garden is of a good size and is South facing. The double detached garage and driveway provide an abundance of parking for several vehicles.

- Molescroft Catchment
- Cloakroom
- Kitchen/Breakfast
- Four Bedrooms
- GasCH/Double Glazing
- Corner South Facing Plot
- Two Well Proportioned Reception Rooms
- Utility Room
- Two Bathrooms
- Double Garage/Parking For Several Vehicles

## Danesway

Approximate Gross Internal Floor Area = 139.4 sq m / 1501 sq ft  
(Including Garage)

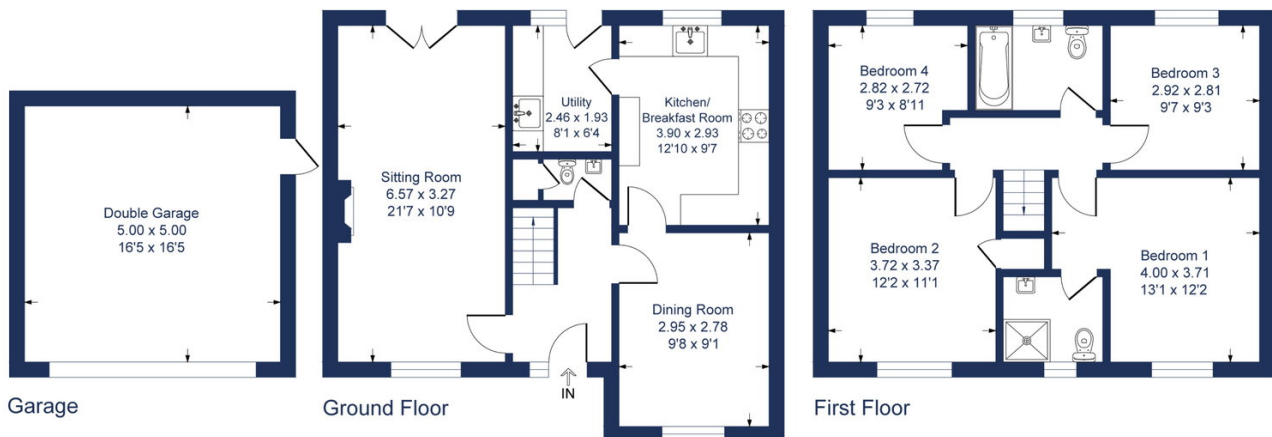


Illustration for identification purposes only, measurements are approximate, not to scale.