



OVER 60?

Secure this property
for up to **59% less!**

Guide Price

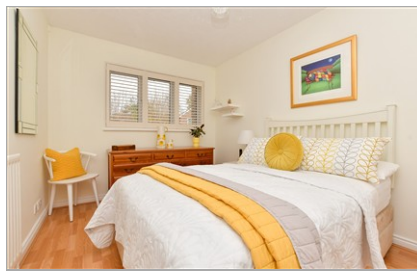
£600,000

Freehold

3x  2x  2x 

**Green Leaf Avenue,
Wallington, Surrey, SM6**

cubitt&west
Helping you move forwards



Main features

- Simply stunning end-of-terrace family home situated in a quiet private development
- Offering spacious accommodation throughout, vendor suited
- Close to a variety of popular schools, local amenities and public transport
- Large conservatory, sitting room, downstairs cloakroom, shower room and first floor family bathroom
- Allocated parking, landscaped rear garden

Accommodation

GROUND FLOOR

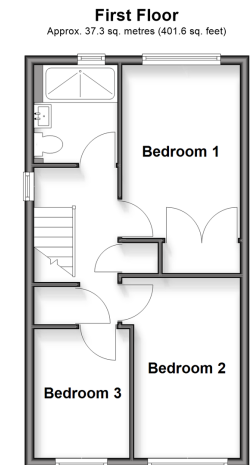
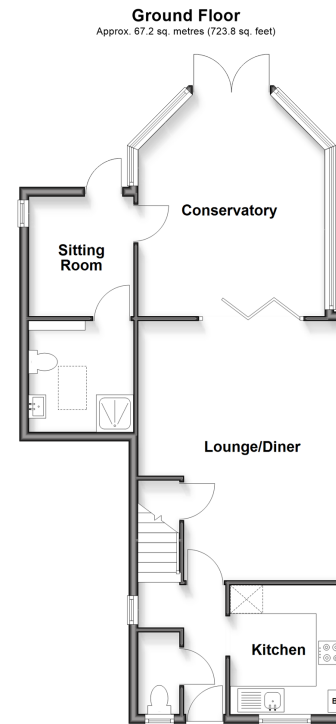
Entrance Hall
 Lounge/Diner: 18'3 x 14'8 (5.57m x 4.47m)
 Kitchen: 8'11 x 8'3 (2.72m x 2.52m)
 Conservatory: 15'1 x 13'10 (4.60m x 4.22m)
 Sitting Room: 8'0 x 7'2 (2.44m x 2.19m)
 Wet Room: 7'7 x 7'4 (2.31m x 2.24m)
 Cloakroom

FIRST FLOOR

Bedroom 1: 12'7 x 9'3 (3.84m x 2.82m)
 Bedroom 2: 12'8 x 8'9 (3.86m x 2.67m)
 Bedroom 3: 8'11 x 6'10 (2.72m x 2.08m)
 Shower Room: 7'2 x 5'9 (2.19m x 1.75m)

OUTSIDE

Driveway
 Rear Garden



Call Wallington - 020 8647 0011 ■ cubittandwest.co.uk

■ Legal advice should be taken to verify fixtures/fittings, planning, alterations and/or lease details
 ■ Through a Homewise Home For Life Plan people aged 60+ can secure this property for up to 50% less, by purchasing a Lifetime Lease.

■ Appliances & services are untested, dimensions are approximate and floor plans are not to scale