



STAPLETON DERBY



Speakman Road, St. Helens, WA10 6TG

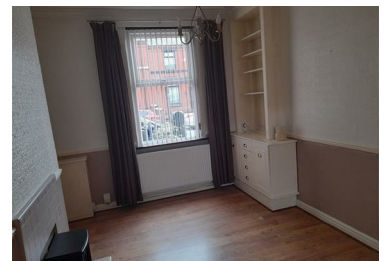
£850 PCM



Stapleton Derby are pleased to offer for let this 2 bedroom mid terraced property located in the Dentons Green area. The property is within walking distance of St Helens town centre and convenient for local schools and amenities. The property briefly comprises; lounge, dining room, kitchen, two bedrooms, family bathroom and yard to rear. Early viewing is recommended.

EPC - D
Council Tax Band - B
Monthly Rent - £850
Deposit - £980

- VICTORIAN TERRACE
- GAS CENTRAL HEATING
- FITTED KITCHEN
- REAR COURTYARD
- AMENITIES NEARBY
- TWO BEDROOMS
- DOUBLE GLAZED
- GARDEN FRONTED
- CLOSE TO MOTORWAY NETWORKS
- VIEWING STRONGLY ADVISED



73-75 Corporation Street, St Helens, WA10 1SX

Tel: 01744 883 322 Email: info@stapletonderby.co.uk www.stapletonderby.co.uk