

RICE+ROMAN



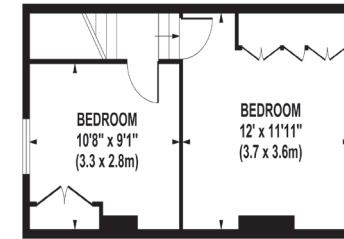
Staines Road

TW3 3JJ

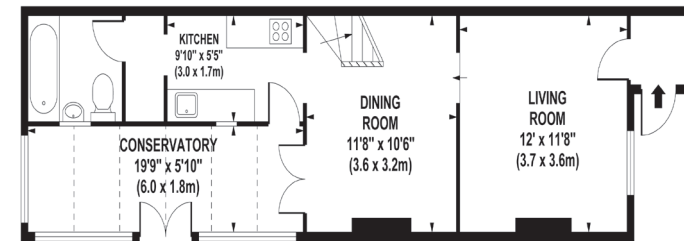


Living Area

Staines Road, Hounslow, Greater London, TW3 3JJ



FIRST FLOOR



GROUND FLOOR

APPROX. GROSS INTERNAL FLOOR AREA 791 SQ FT / 73 SQ M

Whilst every attempt has been made to ensure the accuracy of the floorplan contained here, measurements of doors, windows and rooms are approximate and no responsibility is taken for any error omission or mis-statement. These plans are for representation purposes only and should be used as such by any prospective purchaser / tenant. The services, systems and appliances listed in this specification have not been tested and no guarantee as to their operating ability or their efficiency can be given

© www.skystoglobal.com

- Two Bedrooms
- Semi-Detached Character Home
- Two Reception Rooms & Conservatory
- Feature Freplaces and Beamed Ceilings
- Excellent Condition Throughout
- Gated Parking to the Rear

Price: £425,000.00
Council Tax Band: C
EPC Rating: D
Tenure: Freehold

For more information
 please contact:

Rice & Roman
 T: 01344 981246
 E: info@riceandroman.co.uk
 Lynwood Village, SL50FJ
www.riceandroman.co.uk

**RICE +
 ROMAN**

Agents Notices - These property details are set out as a general outline only and do not constitute any part of an Offer or Contract. Any services, equipment, fittings or central heating systems have not been tested and no warranty is given or implied that these are in working order. Buyers are advised to obtain verification from their solicitor or surveyor. Fixtures, fittings and other items are not included unless specifically described. All measurements, distances and areas are approximate and for guidance only. Room measurements are taken to be the nearest 10cm and prospective buyers are advised to check these for any particular purpose, e.g. fitted carpets and furniture. This material is protected by the laws of copyright. The owner of the copyright is Countrywide Estate Agents. This property sheet forms part of our database rights and copyright laws. No unauthorised copying or distribution without permission.