

Frank Harris & Co.



Regent Square, WC1H

£500,000

A smartly presented two bedroom top floor apartment within the popular purpose built building in the heart of Bloomsbury. Benefiting from great natural light and Amtico flooring throughout, the accommodation comprises a generous open plan reception/dining room with access to a balcony which provides lovely southerly views overlooking the garden square, a well appointed newly fitted kitchen with Miele appliances and quartz worktop, two double bedrooms and a bathroom with a bath. The property further benefits



Rodmell is ideally situated between King's Cross St. Pancras International and Russell Square stations, offering excellent transport links. Just a five-minute walk away is the Brunswick Centre, which provides a variety of shopping, dining, and everyday amenities.

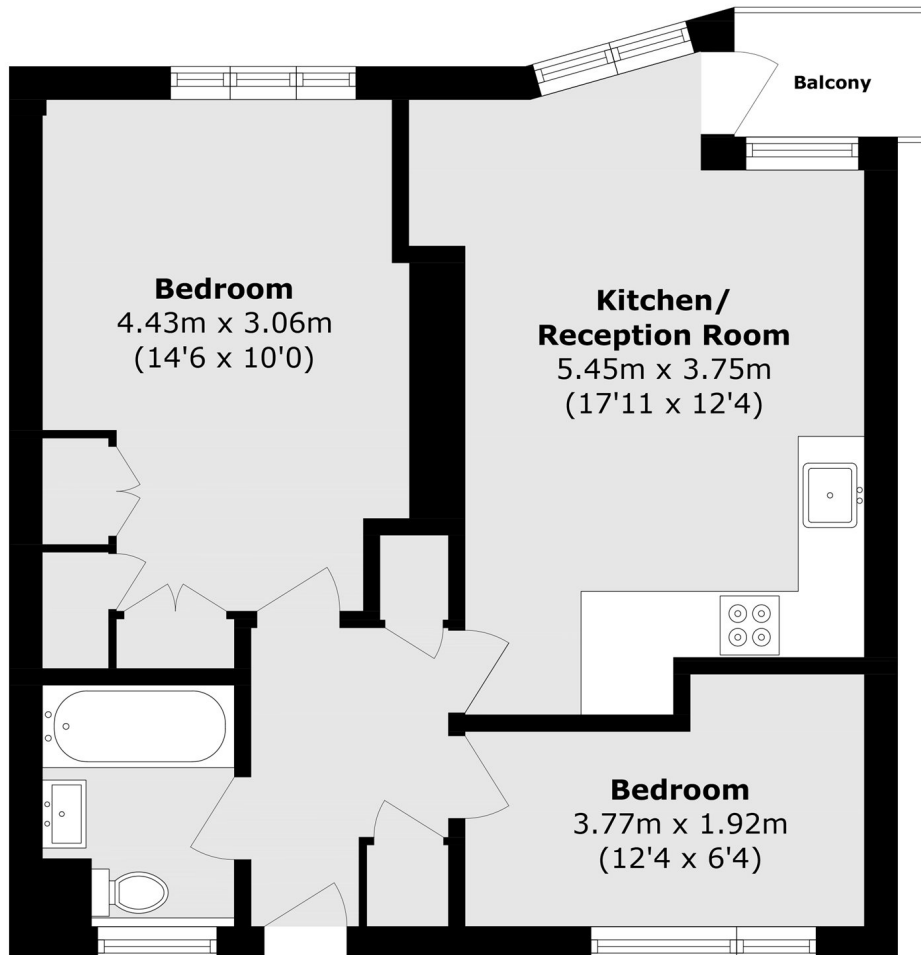
- Lift access • Two double bedrooms • Balcony •
- South facing • Garden Square • Excellent transport links •







Frank Harris & Co.



Total area (approx.): 55.2 sq. m (594.1 sq. ft)

Balcony area (approx.): 1.8 sq. m (19.3 sq. ft)

Frank Harris & Co. Bloomsbury and Kings Cross

81 Marchmont Street,

London, WC1N 1AL

020 7405 4444

bloomsburysales@frankharris.co.uk

Energy Rating: . We aim to make our particulars both accurate and reliable. However they are not guaranteed; nor do they form part of an offer or contract. If you require clarification on any points then please contact us, especially if you're traveling some distance to view. Please note that appliances and heating systems have not been tested and therefore no warranties can be given as to their good working order.

