



Connells

Pessall Lane
Edingale Tamworth



Property Description

This stunning three-bedroom semi-detached home is nestled in the charming village of Edingale, offering a perfect blend of countryside character and spacious modern living. The property boasts generously proportioned rooms throughout, including two inviting reception rooms ideal for both relaxation and entertaining. A delightful countryside-style kitchen sits at the heart of the home, complemented by a practical utility room for added convenience. Externally, the property features a beautifully landscaped front garden, while to the rear lies a large, meticulously maintained garden-perfect for enjoying outdoor living in a peaceful setting. Upstairs, three well-sized bedrooms provide comfortable accommodation for families or those seeking extra space. With on-street parking available and of timber construction, this unique home presents a wonderful opportunity to enjoy village life in a truly attractive setting.

****MULTI FUEL BURNER IN LOUNGE****



Edingale is a charming and highly regarded rural village set within the picturesque Mease Valley, offering an idyllic lifestyle surrounded by open countryside and farmland. Known for its peaceful atmosphere and strong sense of community, the village has previously been recognised as a "Best Kept Village," reflecting its pride and appeal. With a small population, Edingale provides a tranquil setting ideal for those seeking a quieter pace of life, whilst still benefiting from a welcoming and active local community.

Entrance Hallway

Living Room

13' 10" x 12' 10" (4.22m x 3.91m)

Dining Room

10' 11" x 9' 8" (3.33m x 2.95m)

Kitchen

9' 7" x 6' 1" (2.92m x 1.85m)

Utility Room

9' 2" x 6' 9" (2.79m x 2.06m)

Lobby

Ground Floor Wc

First Floor Landing

Master Bedroom

11' 3" x 11' 1" (3.43m x 3.38m)

Bedroom Two

11' 3" x 11' 1" (3.43m x 3.38m)

Bedroom Three

10' 3" x 7' 2" (3.12m x 2.18m)

Family Bathroom

Stunning Front & Rear Gardens

On Street Parking

Bedroom Two

11' 3" x 9' 1" (3.43m x 2.77m)

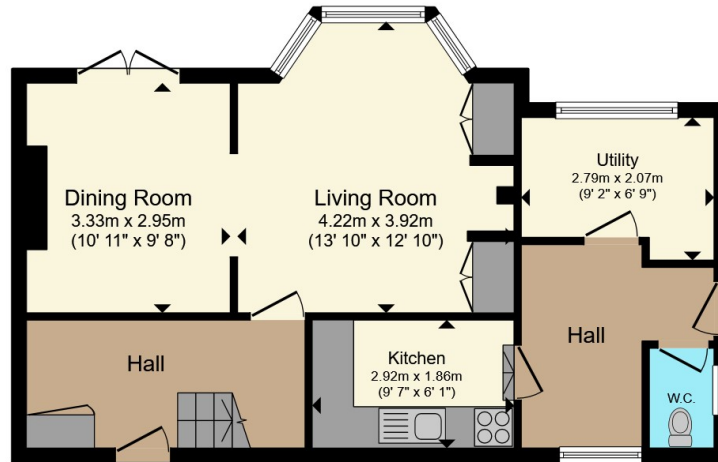
Family Bathroom

7' 1" x 6' (2.16m x 1.83m)

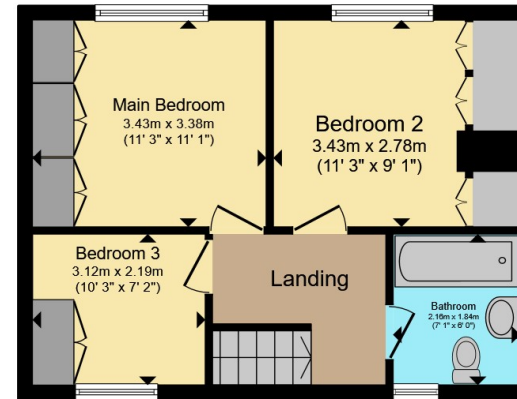








Ground Floor



First Floor

Total floor area 90.3 m² (972 sq.ft.) approx

This floor plan is for illustrative purposes only. It is not drawn to scale. Any measurements, floor areas (including any total floor area), openings and orientation are approximate. No details are guaranteed, they cannot be relied upon for any purpose and they do not form part of any agreement. No liability is taken for any error, omission or misstatement. A party must rely upon its own inspection(s). Powered by www.propertybox.io



To view this property please contact Connells on

T 01543 262 376
E lichfield@connells.co.uk

11-13 Bore Street
 LICHFIELD WS13 6LZ

EPC Rating: E Council Tax
 Band: B

Tenure: Freehold

view this property online connells.co.uk/Property/LFD312145



1. MONEY LAUNDERING REGULATIONS Intending purchasers will be asked to produce identification documentation at a later stage and we would ask for your co-operation in order that there will be no delay in agreeing the sale. 2. These particulars do not constitute part or all of an offer or contract. 3. The measurements indicated are supplied for guidance only and as such must be considered incorrect. Potential buyers are advised to recheck measurements before committing to any expense. 4. We have not tested any apparatus, equipment, fixtures, fittings or services and it is in the buyers interest to check the working condition of any appliances.

Connells Residential is registered in England and Wales under company number 1489613, Registered Office is Cumbria House, 16-20 Hockliffe Street, Leighton Buzzard, Bedfordshire, LU7 1GN. VAT Registration Number is 500 2481 05.

See all our properties at www.connells.co.uk | www.rightmove.co.uk | www.zoopla.co.uk

Property Ref: LFD312145 - 0003