



Price
£280,000

Freehold

3x  1x  1x 

**Burgess Road,
Aylesham, Canterbury,
Kent, CT3**

OVER 60?

Secure this property
for up to **59% less!**

Wards
Helping you move forwards



Main features

- Excellent community amenities
- Spacious open plan living area, ideal for modern family life
- Recently fitted contemporary kitchen with stylish finishes
- Generous garden space, perfect for children and pets
- Convenient train links to London, great for commuters

Accommodation

GROUND FLOOR

Entrance Porch

Cloakroom

Lounge/Diner: 21'4 x 15'8 (6.51m x 4.78m)

Kitchen: 12'3 x 11'0 (3.74m x 3.36m)

FIRST FLOOR

Bedroom 1: 13'8 x 10'9 (4.17m x 3.28m)

Bedroom 2: 10'8 x 9'3 (3.25m x 2.82m)

Bedroom 3: 12'7 x 6'9 (3.84m x 2.06m)

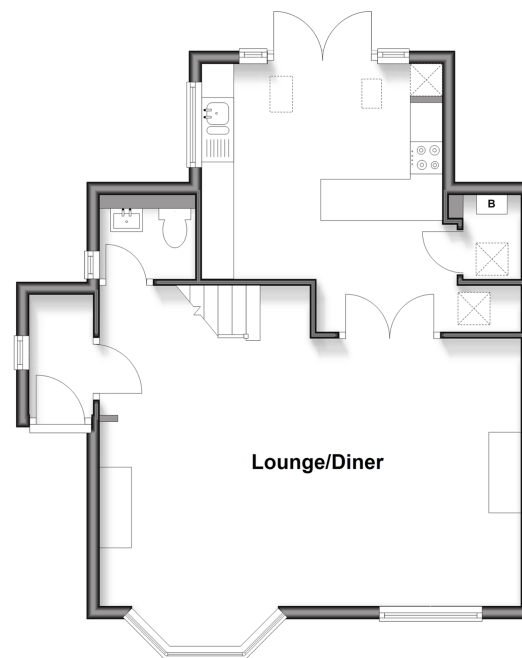
Bathroom

OUTSIDE

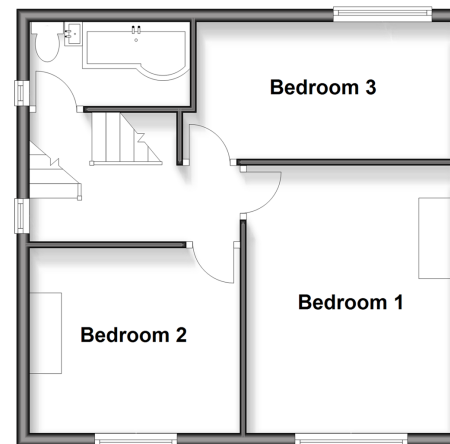
Front Garden

Rear Garden

Ground Floor
Approx. 52.0 sq. metres (559.5 sq. feet)



First Floor
Approx. 41.5 sq. metres (446.7 sq. feet)



Call Canterbury - 01227 766669 ■ wardsofkent.co.uk

- Legal advice should be taken to verify fixtures/fittings, planning, alterations and/or lease details
- Appliances & services are untested, dimensions are approximate and floor plans are not to scale
- Through a Homewise Home For Life Plan people aged 60+ can secure this property for up to 50% less, by purchasing a Lifetime Lease.



10349346/20250913/TG/CB