



## Russell Road, CR4

£500,000

\* Share Of The Freehold \* A large duplex three bedroom maisonette with two bathrooms and two balconies and an allocated parking space. There is a high specification throughout, including an attention to energy efficiency including underfloor heating and modern boiler. A further benefit of this development is a low service charge, as well as share of the freehold for all residents.

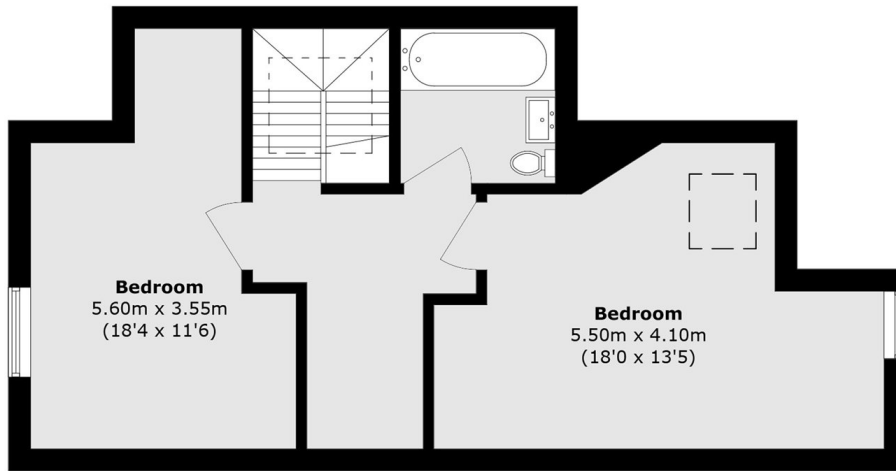
\*Images may be of another flat within the same development for representative purposes \*

Century House is a small boutique development of just nine apartments, all with a share of the freehold. Tucked away on Russell Road, with Wimbledon and Tooting nearby by car. The wide green open spaces of Mitcham Common is also just a short walk away with it's open grassy space, wooded areas and ponds, plus various trails for walking and running.

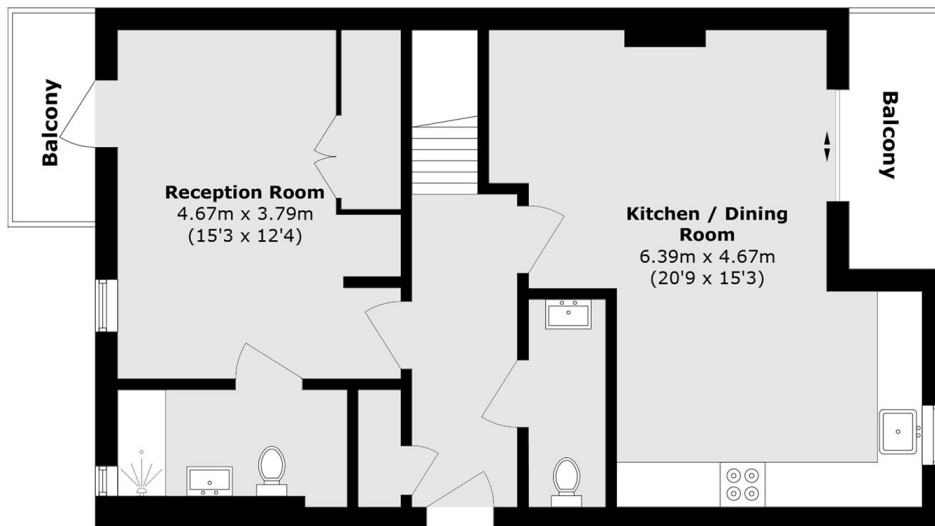
### Features

Share Of The Freehold  
Three Bedrooms  
Two Bathrooms  
Underfloor Heating  
Quartz Worktops  
Modern Kitchens  
Bosch Oven & Hob

Russell Road,  
Mitcham, CR4



**First Floor**



**Ground Floor**

Total area (approx.): 116.8 sq. m (1257.2 sq. ft)