



## MOORDOWN, SE18

£699,950

Terraced house  
Five bedrooms  
Two reception rooms  
Garage  
Garden  
Energy rating: C

@marshandparsons  
marshandparsons.co.uk

MARSH &  
PARSONS



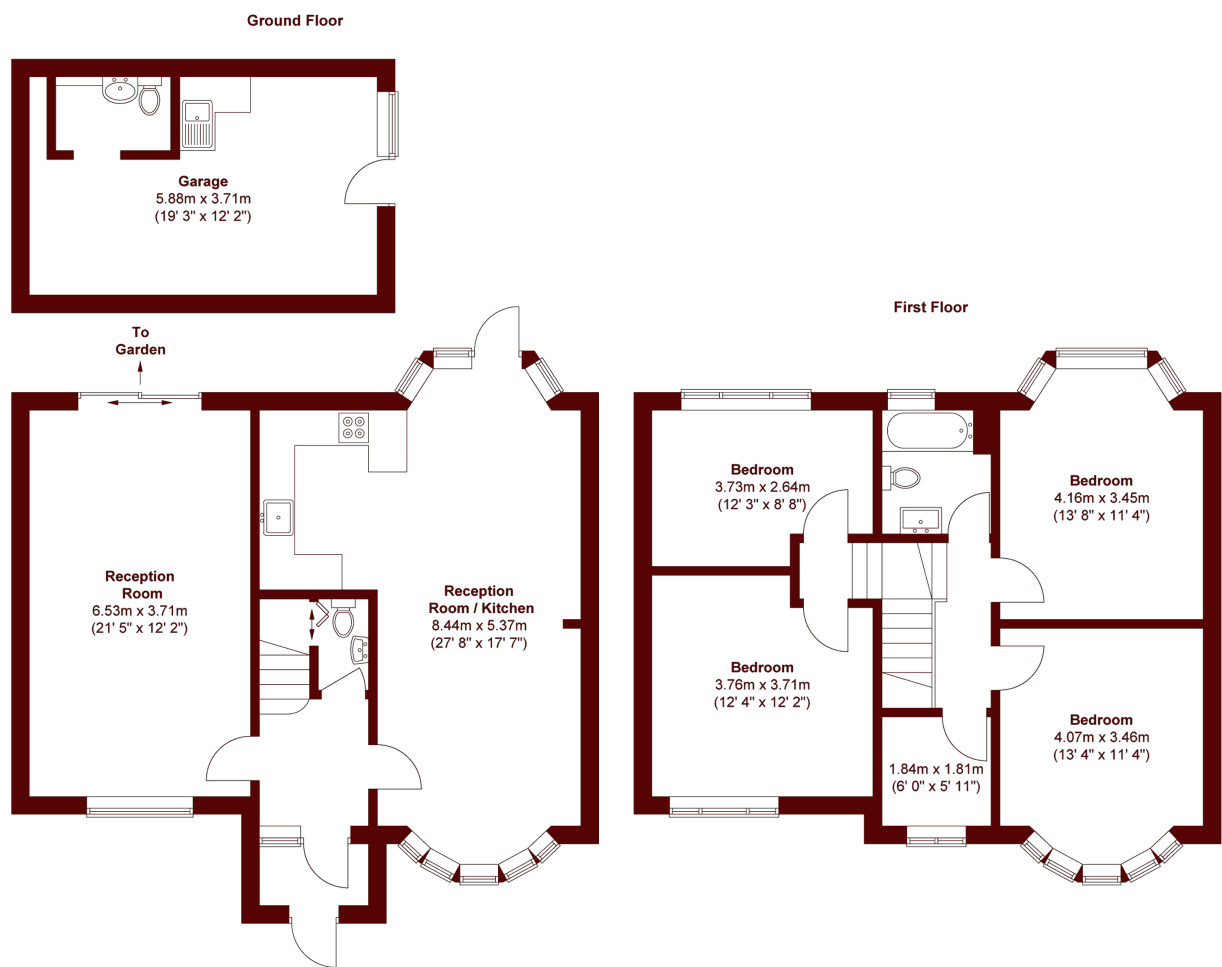
# ABOUT THE PROPERTY

This large five bedroom end-of-terrace home offers excellent space, potential, and a sought after location near Oxleas Woods. With a double-storey extension, garage, and generous garden, it's a great opportunity to create a dream home. The ground floor includes a double reception room, WC, and an open plan kitchen/diner with garden access. Upstairs are four double bedrooms, a fifth bedroom/study, and a family bathroom, with further scope to extend into the loft (STPP).

Located near Oxleas Woods, the property is in catchment for outstanding schools including Christchurch Primary and Harris Academy. Excellent transport links provide regular buses to Blackheath Village, Woolwich (Elizabeth



# STEP INSIDE MOORDOWN



Total area (approx.) : 136.2 sq. m (1466 sq. ft)  
Total garage area (approx.) : 22 sq. m (237 sq. ft)

**Charlton**  
020 8293 0454

Energy Rating: C We aim to make our particulars both accurate and reliable. However, they are not guaranteed; nor do they form part of an offer or contract. If you require clarification on any points then please contact us, especially if you're traveling some distance to view. Please note that appliances and heating systems have not been tested and therefore no warranties can be given as to their good working order

**MARSH &  
PARSONS**