

**LONDON  
VICTORIA  
GROUPS** 



## Hampton Tower, 75, Marsh Wall

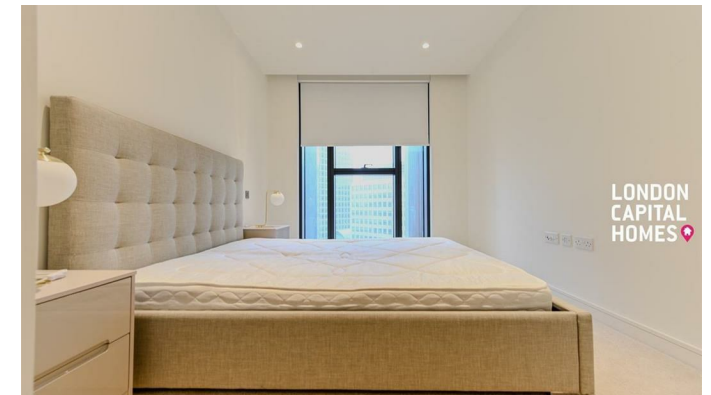
, LONDON E14 9LW

- Internal Area : 624 sqft
- Gym / Media Room
- Residents lounge
- Communal Terrace
  - CTB-E
- Short walk to Canary Wharf
  - 24 Hours Concierge
  - Sauna
- Residents' swimming pool
  - EPC-B

**£3,200 PCM**



Local Authority **Tower Hamlets**  
Council Tax Band **E**  
EPC Rating **B**



**London Office Office**

Spaces Victoria, 25 Wilton Road, Pimlico,  
London, SW1V 1LW

**Contact**

020 3084 3094  
[XL@londonvictoriagroups.co.uk](mailto:XL@londonvictoriagroups.co.uk)  
[www.londonvictoriagroups.co.uk](http://www.londonvictoriagroups.co.uk)

Agents Note: Whilst every care has been taken to prepare these particulars, they are for guidance purposes only. All measurements are approximate and for general guidance purposes only and whilst every care has been taken to ensure accuracy, they should not be relied upon and potential buyers/tenants are advised to recheck the measurements.