



Birtley Crescent, Bedlington, NE22 5BP

£210,000

**Harpers** | POWERED BY **exp** UK  
property people



**Bedrooms: 3 | Bathrooms: 2 | Receptions: 2**

Situated within a highly regarded residential area, this attractive semi-detached family home offers stylish open-plan living, modern finishes and a well-balanced layout ideal for today's lifestyle. The accommodation includes three well-proportioned bedrooms, served by a family bathroom and an en-suite shower room to the principal bedroom. The heart of the home is the superb open plan living accommodation, seamlessly flowing into a modern kitchen space, creating a bright and sociable environment perfect for family life and entertaining. Externally, the property enjoys a good-sized enclosed rear garden, along with the benefit of garage storage and a converted internal garage space, offering excellent flexibility for a home office, playroom or additional storage. A driveway to the front provides convenient off-street parking. Beautifully presented throughout and set within a desirable residential location, this is a move-in-ready home that delivers comfort, style and practicality in equal measure.

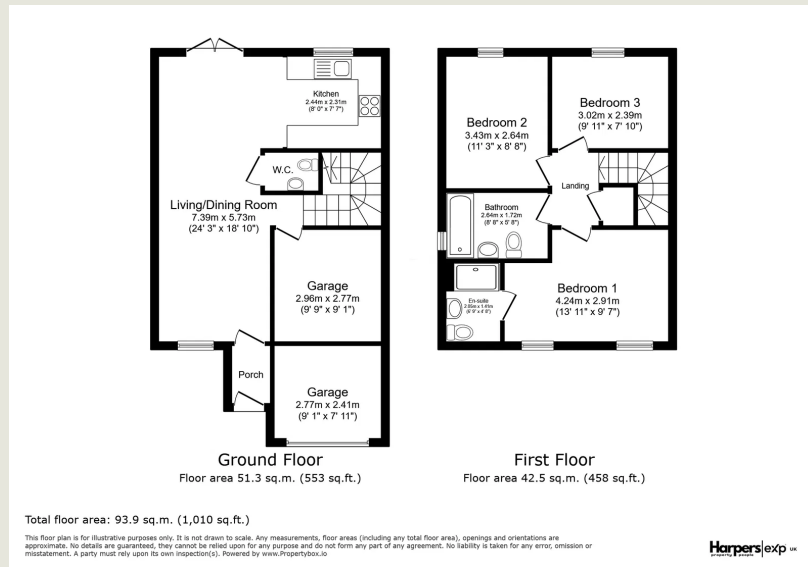
- Semi-Detached Family Home
- Three Well Proportioned Bedrooms
- Family Bathroom & Ensuite Shower
- Superb Open Plan Living Accommodation
- Modern Kitchen Space
- Good-Sized Enclosed Rear Garden
- Garage Storage & Converted Internal Garage Space
- Beautifully Presented Throughout
- Desirable Residential Location
- Driveway To Front











**Harpers Property People**  
80 Windsor Gardens, Bedlington, NE22 5SY

07813 673 606

[ali@harpersproperty.com](mailto:ali@harpersproperty.com)

<https://harpersproperty.com>

**Harpers**exp UK  
property people