



Marshall Street, W1F
£3,000,000

Dexters



Marshall Street, W1F

A loft style apartment located in one of Central West End's most vibrant locations. Features air conditioning, a 40 ft reception room, three bedrooms and a balcony.

With direct lift access to the parking garage (spaces available to rent) 40 ft reception with wooden floors provides entertaining and leisure space. There are two double bedrooms both Ensuite and additionally a study/bedroom 3. Modern integrated kitchen with island and separate utility space.

Located close to Regents and Carnaby Streets with access to Theatreland and the amenities of the West End.

Features

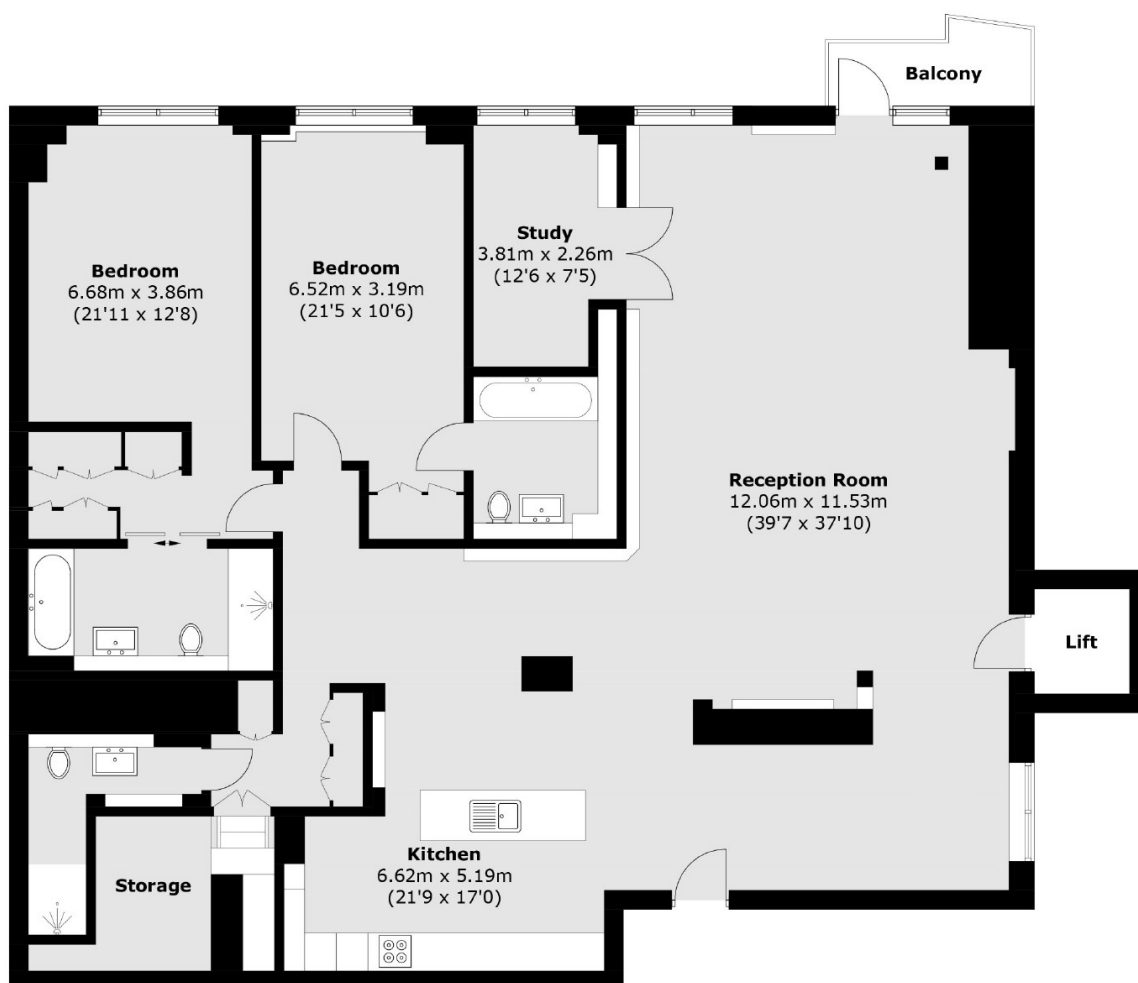
- Two En Suite Bedrooms
- 40 ft Reception with Balcony
- Gated Development
- Concierge & Air conditioning
- Study/Bedroom 3
- Loft Apartment







Marshall Street, London, W1F



Fourth Floor

Total area (approx.): 199.0 sq. m (2,142.0 sq. ft)
(Excluding Lift)
Balcony: 3.6 sq. m (38.7 sq. ft)