



## Park Close, KT2

£320,000

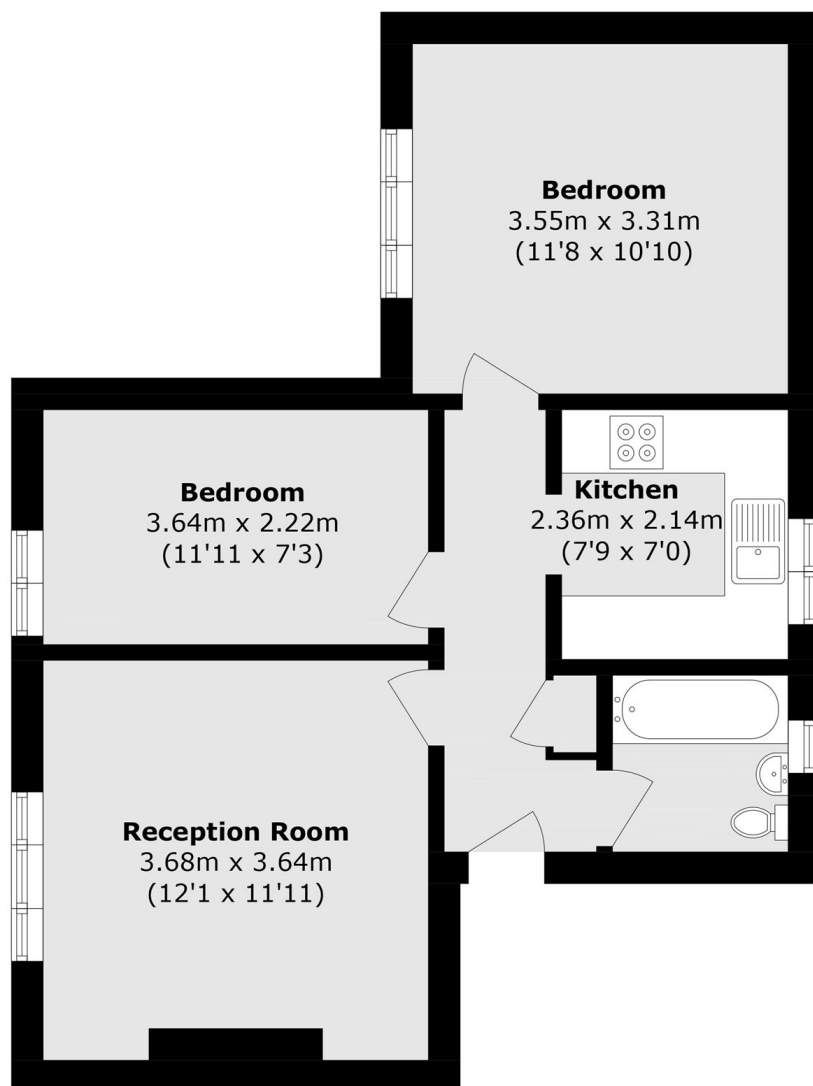
Forming part of this small residential development in North Kingston, this two bedroom ground floor apartment is offered for sale with no onward chain. The owners have collectively purchased the freehold, giving residents control over building expenditure to ensure it is well maintained while keeping service charges to a minimum. This provides a significant benefit for the new owners, who will acquire a share of the freehold upon completion with a brand new 999 year lease.

This small gated development is quietly tucked away just off Park Road, ideally positioned less than half a mile from both Norbiton Station and the open green spaces of Richmond Park. With local shops just around the corner and Kingston town centre under a mile away, this is a superb location to enjoy everything Kingston has to offer.

### Features

- Two Bedrooms
- Ground Floor
- Modern Kitchen & Bathroom
- Communal Gardens
- Share Of Freehold
- Residents Parking

# Park Close, Kingston Upon Thames, KT2



Total area (approx.): 48.8 sq. m (525.2 sq. ft)