

## 219 BATH ROAD SLOUGH, SL1 4BF

Cameron King proudly presents this modern, well-maintained two-bedroom ground-floor flat located in Slough. The property benefits from a secure video entry system, on-site concierge, and 24-hour porter



# £1,450 PCM



1

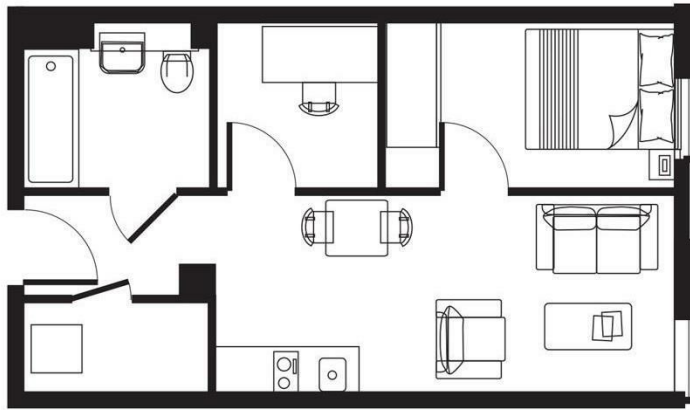


1



1

EPC E



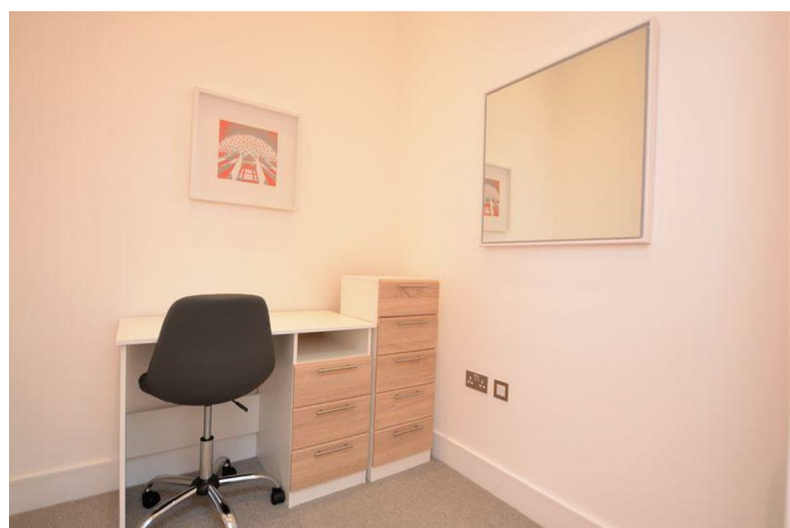
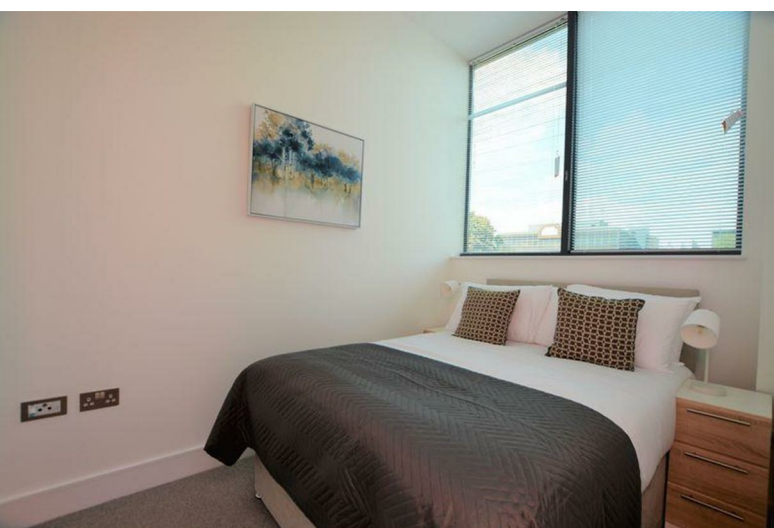
Approx area: 36.8 sq m / 396 sq ft

service. Additional features include a secure allocated parking space for one vehicle. Ideally situated, it offers easy access to local amenities and convenient commuting links to the M4 motorway.

The flat comprises an open-plan living, dining, and kitchen area with integrated appliances, providing a stylish and practical layout. It further offers a spacious double bedroom, electric radiators, and double-glazed windows throughout. Residents also have access to a well-maintained communal area.

Available to let from the end of January 2026 on a part-furnished basis.

- 2 Bedroom Ground Floor Flat
- Modern New Build
- Open Plan Living / Diner / Kitchen
- Integrated Kitchen Appliances
- Allocated Parking
- Secure Entry System
- 24 Hour On Site Porter
- Luxury Communal Entrance
- Part Furnished
- Available 1st February 2026



411 Bath Road, Slough, SL1 5QL  
t: 01628 667442  
e: sales@cameronking.co.uk

