



RESIDENCE

65 Chatelherault Crescent, Hamilton, ML3 7PR

www.residencestateagents.co.uk



Viewing by appointment with Residence Hamilton
T: 01698 444333 | E: hamilton@residenceestateagents.co.uk | A: 34 Cadzow Street, Hamilton, ML3 6DG



RESIDENCE



3 Bedrooms | 2 Public Rooms | 1 Bathrooms

Located within the ever-popular Silvertonhill district of Hamilton, this sure to be popular Wimpey built 3 bedroomed, large style semi-detached villa is an ideal family home.

The accommodation comprises, welcoming reception hallway with staircase leading to the upper floor level, lounge with aspects to front and open plan access to the formal dining room which has patio doors leading to a rear facing, double glazed conservatory. Modern fitted kitchen with a range of base and wall mounted storage units with worktop surfaces and outer door to the rear. On the upper floor there are 3 bedrooms and a fitted shower room.

Features of the property include gas central heating, double glazing, sizable monobloc driveway, garage with electric door and established gardens.

Early viewing is highly advised.

Hamilton is home to excellent shopping facilities, sports amenities and clubs including golf courses, swimming pools, gymnasiums and parks. There are several highly regarded schools. It is also in close proximity to the prestigious Hamilton College. There are a wide variety of restaurants, bistros and pubs providing excellent choice. For those commuting by public transport there are regular bus and train links to the surrounding towns including East Kilbride, Motherwell, Glasgow and Edinburgh.



1065.63 sq ft | EER = C



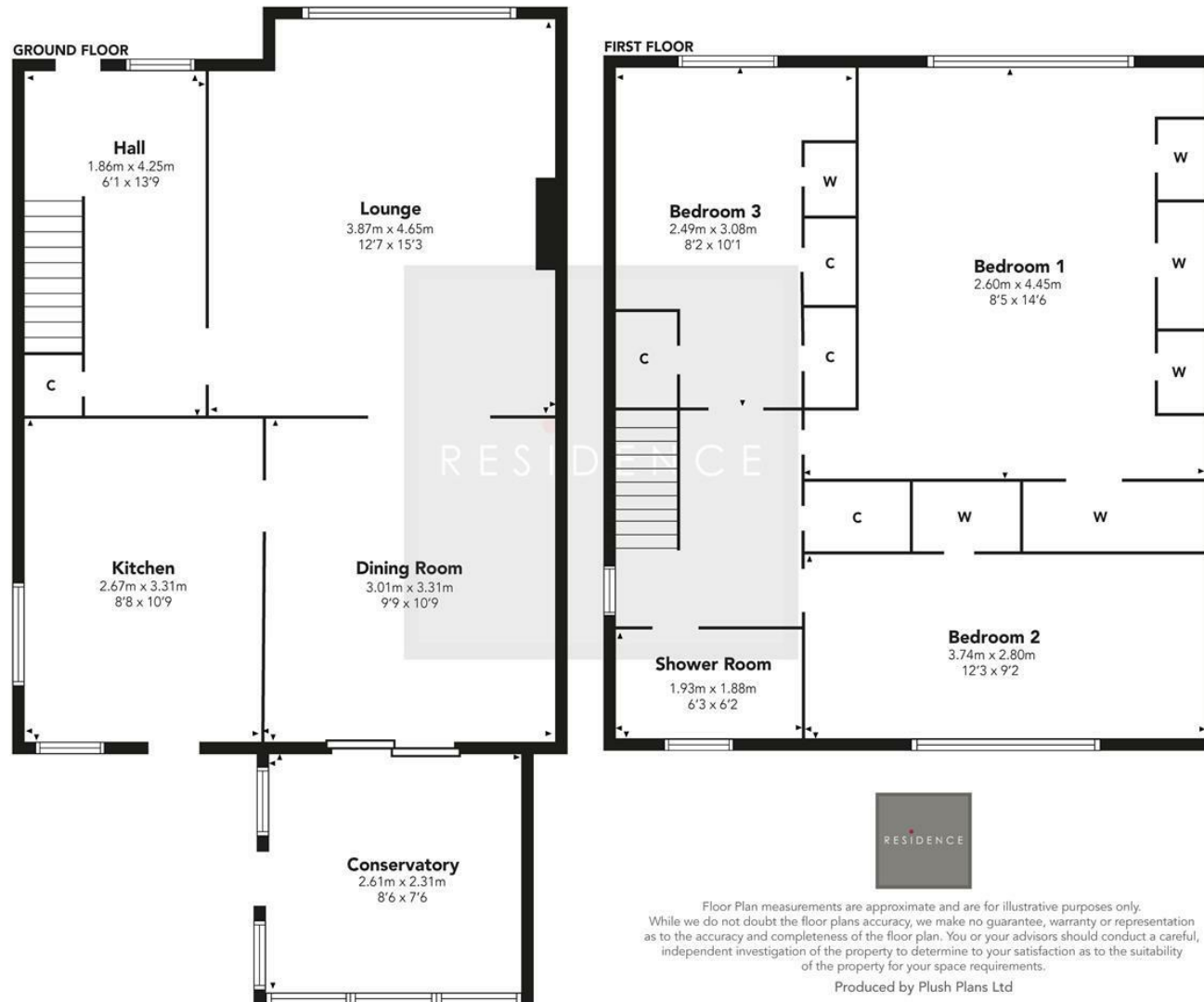
RESIDENCE







Chatelherault Crescent



We believe these details to be accurate; however, they do not form any part of a contract. Fixtures and fittings are not included unless specified in the enclosed. Photographs are for general information and it must not be inferred that any item is included for sale with the property. All distances and measurements are approximate. Floorplans may not be to scale and are for illustration purposes only.