



La Douette

La Grande Route De St Jean



 Knight
Frank

La Douette, La Grande Route De St Jean, St John, JE3 4FN

Set at the end of a long, private driveway and enjoying a truly idyllic setting with sweeping countryside views, this newly refurbished traditional pink granite home offers a rare combination of elegance, space, and modern luxury. Finished to an exceptional standard throughout, the residence blends timeless character—including original fireplaces—with contemporary comfort, creating a turnkey family retreat.

Inside, the property boasts five generous bedrooms and four beautifully appointed bathrooms, along with five versatile reception rooms that provide superb flexibility for family living and entertaining. The interiors have been tastefully redesigned, featuring high-quality finishes, thoughtful detailing, and an effortless sense of style.

A highlight of the home is its adaptable accommodation, including a media room, gym, and impressive storage options, ensuring practicality matches the sophistication of the living spaces.

Externally, the property is equally impressive. The south facing, walled, and low maintenance gardens wrap around the home, offering multiple areas for relaxation and outdoor dining, while a swimming pool provides a stunning focal point for summer enjoyment. With a double garage and ample driveway parking, the home caters seamlessly to modern family needs.

Perfectly positioned to capture uninterrupted rural outlooks, this exceptional granite home offers both privacy and tranquillity in an enviable countryside location—an outstanding opportunity for those seeking luxury living in a truly picturesque setting.



Parish: St John

Qualification: Qualified

Tenure: Freehold

Price £3,795,000



- Newly refurbished granite home finished to an exceptional standard
- Five bedrooms, four bathrooms, and five versatile reception rooms
- Idyllic private setting down a long driveway with stunning field views
- Wrap around gardens with swimming pool, double garage and ample parking
- Adaptable accommodation including media room, gym, and extensive storage
- Tasteful blend of character and contemporary



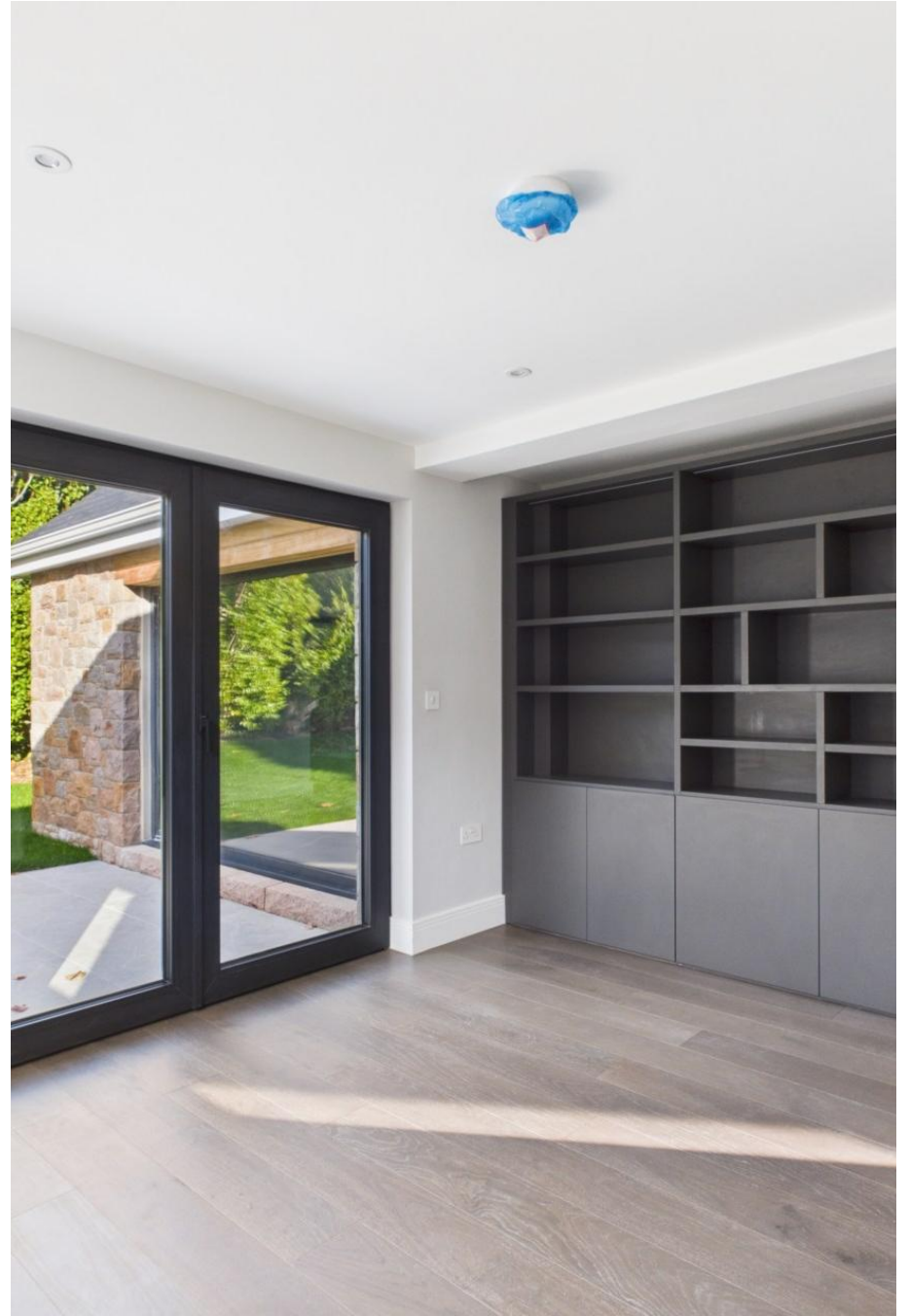




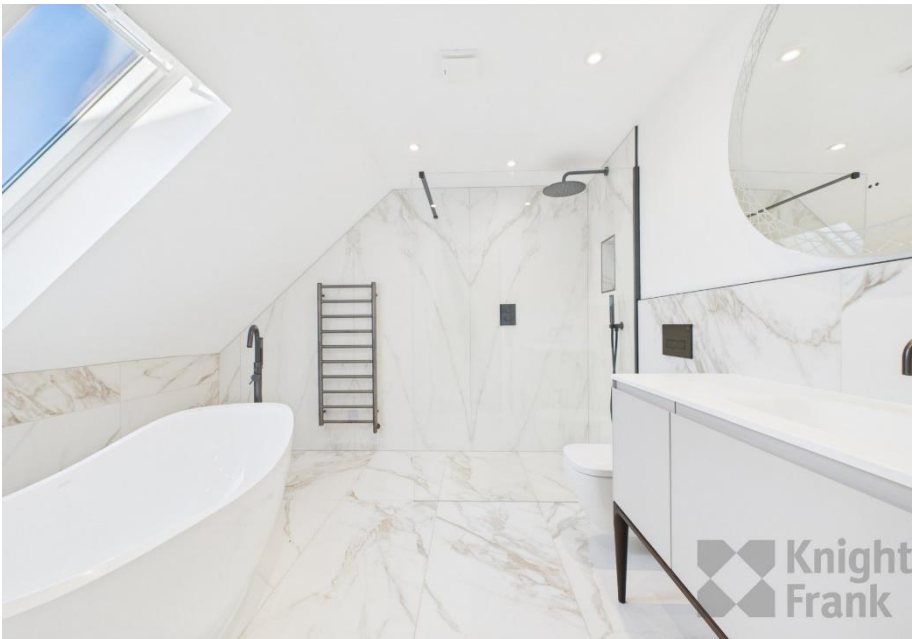
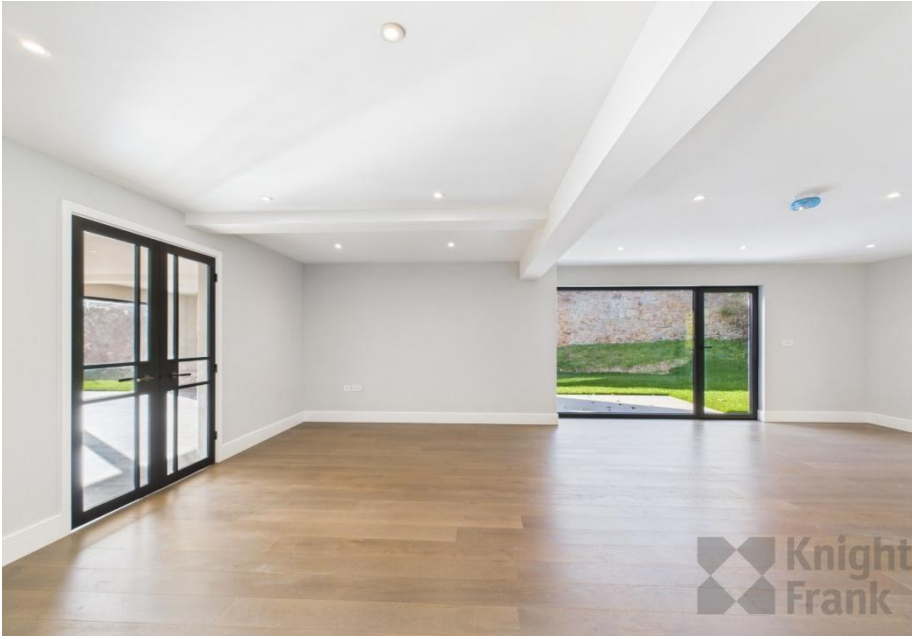
 Knight
Frank



 KnoxFranks









 Knight
Frank

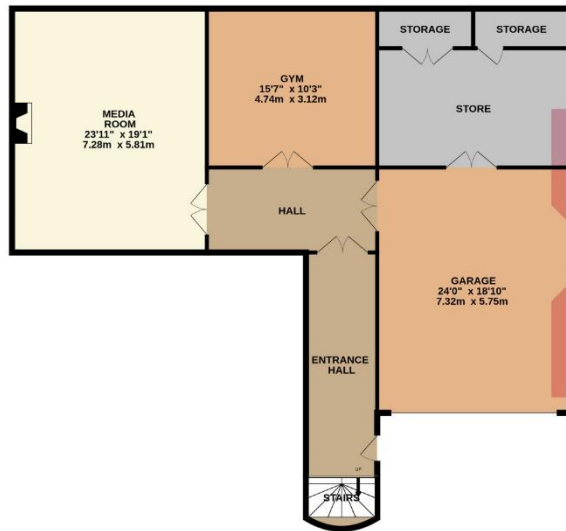




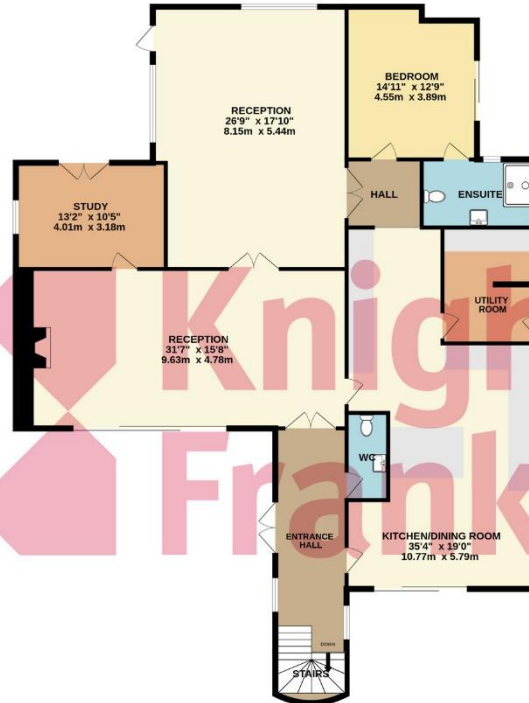




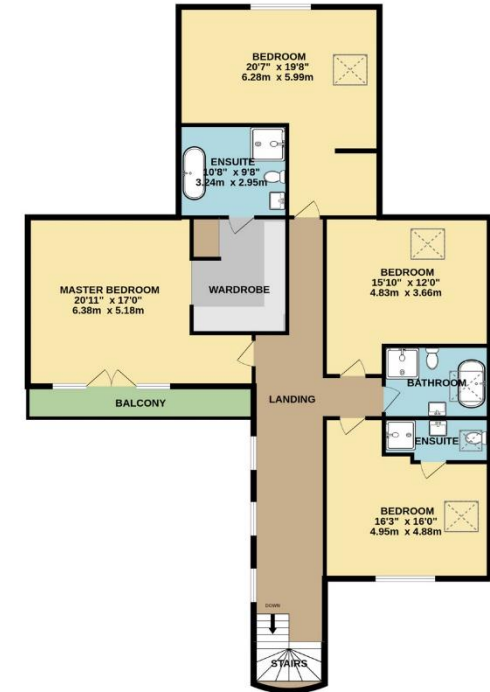
GROUND FLOOR
1779 sq.ft. (165.3 sq.m.) approx.



1ST FLOOR
2264 sq.ft. (210.3 sq.m.) approx.



2ND FLOOR
1663 sq.ft. (154.5 sq.m.) approx.



TOTAL FLOOR AREA : 5707 sq.ft. (530.2 sq.m.) approx.

Whilst every attempt has been made to ensure the accuracy of the floorplan contained here, measurements of doors, windows, rooms and any other items are approximate and no responsibility is taken for any error, omission or mis-statement. This plan is for illustrative purposes only and should be used as such by any prospective purchaser. The services, systems and appliances shown have not been tested and no guarantee as to their operability or efficiency can be given.
Made with Metropix ©2025

This plan is for layout guidance only. Not drawn to scale unless stated. Windows and door openings are approximate. Whilst every care is taken in the preparation of this plan, please check all dimensions, shapes and compass bearings before making any decisions reliant upon them.

+441534 877977

Knight Frank Jersey

37-39 Halkett Place St Helier, Jersey JE2 4WG

knightfrank.je

Your partners in property

1. Particulars: These particulars are not an offer or contract, nor part of one. You should not rely on statements given by Knight Frank Jersey in the particulars, by word of mouth or in writing (“information”) as being factually accurate about the property, its condition or its value. Neither Knight Frank Jersey nor any joint agent has any authority to make any representations about the property, and accordingly any information given is entirely without responsibility on the part of Knight Frank Jersey. 2. Material Information: Please note that the material information is provided to Knight Frank Jersey by third parties and is provided here as a guide only. While Knight Frank Jersey has taken steps to verify this information, we advise you to confirm the details of any such material information prior to any offer being submitted. If we are informed of changes to this information by the seller or another third party, we will use reasonable endeavours to update this as soon as practical. 3. Photos, Videos etc: The photographs, property videos and virtual viewings etc. show only certain parts of the property as they appeared at the time they were taken. Areas, measurements and distances given are approximate only. 4. Regulations etc: Any reference to alterations to, or use of, any part of the property does not mean that any necessary planning, building regulations or other consent has been obtained. A buyer must find out by inspection or in other ways that these matters have been properly dealt with and that all information is correct. 5. Fixtures and fittings: A list of the fitted carpets, curtains, light fittings and other items fixed to the property which are included in the sale (or may be available by separate negotiation) will be provided by the Seller’s Lawyer. Particulars dated 24/11/2025. All information is correct at the time of going to print.

