



Madeley Road, W5

£400,000

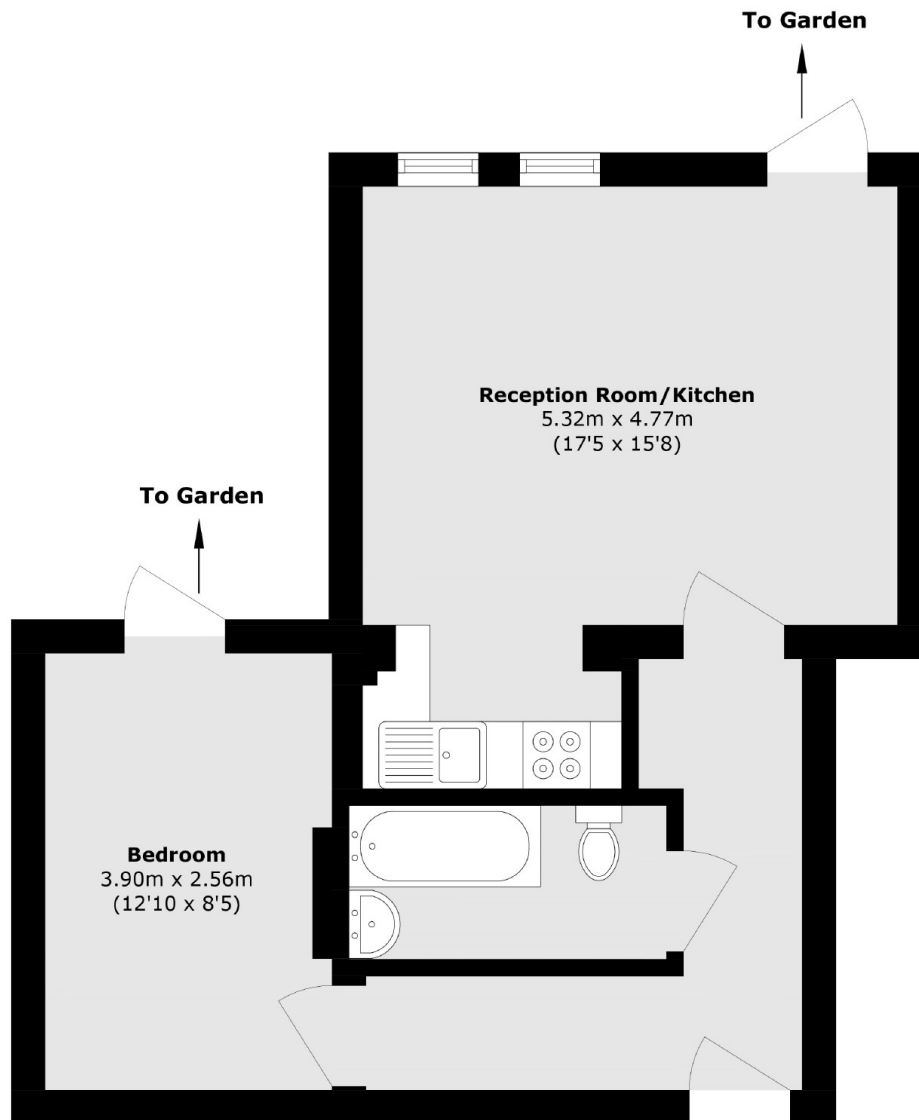
A fantastic one bedroom ground floor apartment presented in good order throughout. The property also benefits from a private garden, the perfect place to entertain and unwind. The property also benefits from a long lease and is being sold with no onward chain.

This property is located 0.2 miles from Ealing Broadway, which offers a variety of restaurants, bars, boutique shops, and convenience stores. Transport links include Ealing Broadway station (Elizabeth Line, Central Line, District Line, and mainline rail).

Features

- One Bedroom
- Private Garden
- Long Lease
- Recently Decorated
- Close to Transport
- No Onward Chain

Madeley Road, London, W5



Total area (approx.): 45.9 sq. m (494.0 sq. ft)