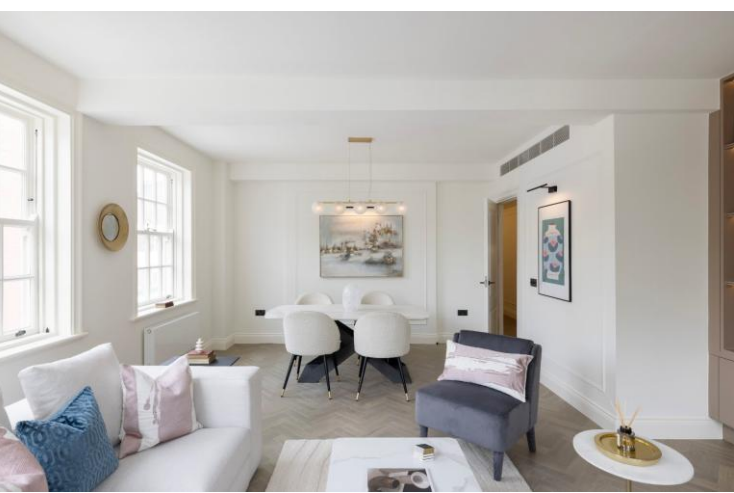




197-205 Brompton Road
Knightsbridge, SW3

CHESTERTONS





This beautifully refurbished three bedroom, two bathroom apartment offers an exceptional blend of contemporary comfort and classic elegance in a prestigious central London setting.

Positioned within an attractive period building, the property has been thoughtfully redesigned to a high standard, showcasing bright, airy interiors and a refined modern finish throughout.

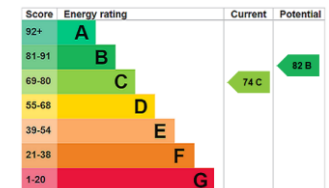
The spacious reception room benefits from generous natural light through large sash windows, creating an inviting environment for both relaxing and entertaining. A newly fitted kitchen, finished with sleek cabinetry and quality integrated appliances, provides an ideal space for home cooking and everyday living. All three bedrooms are well proportioned, with built in storage visible in the photography, while the two stylish bathrooms feature contemporary fixtures and clean, modern tiling.

The apartment further benefits from air conditioning, ensuring year round comfort, along with the convenience of a lift and a dedicated porter service, enhancing both security and ease of living. The refurbishment has introduced soft neutral tones, elegant lighting, and a high level of craftsmanship, resulting in a home that feels both luxurious and practical.

Situated in a sought after estate, the apartment is well connected to the city.

- Three Bedrooms
- Two Bathrooms
- Air Conditioning
- Newly Refurbished
- Porter Service
- Passenger Lift

Asking Price £2,550,000



Tenure: Leasehold 50 years (expiring 26/6/2076)

Service Charge: £9,636.75 per annum

Ground Rent: £50 rising to £150 per annum

Local Authority: Royal Borough of Kensington & Chelsea

Council Tax Band: H

Chestertons Knightsbridge & Belgravia Sales

31 Lowndes St

Knightsbridge

London

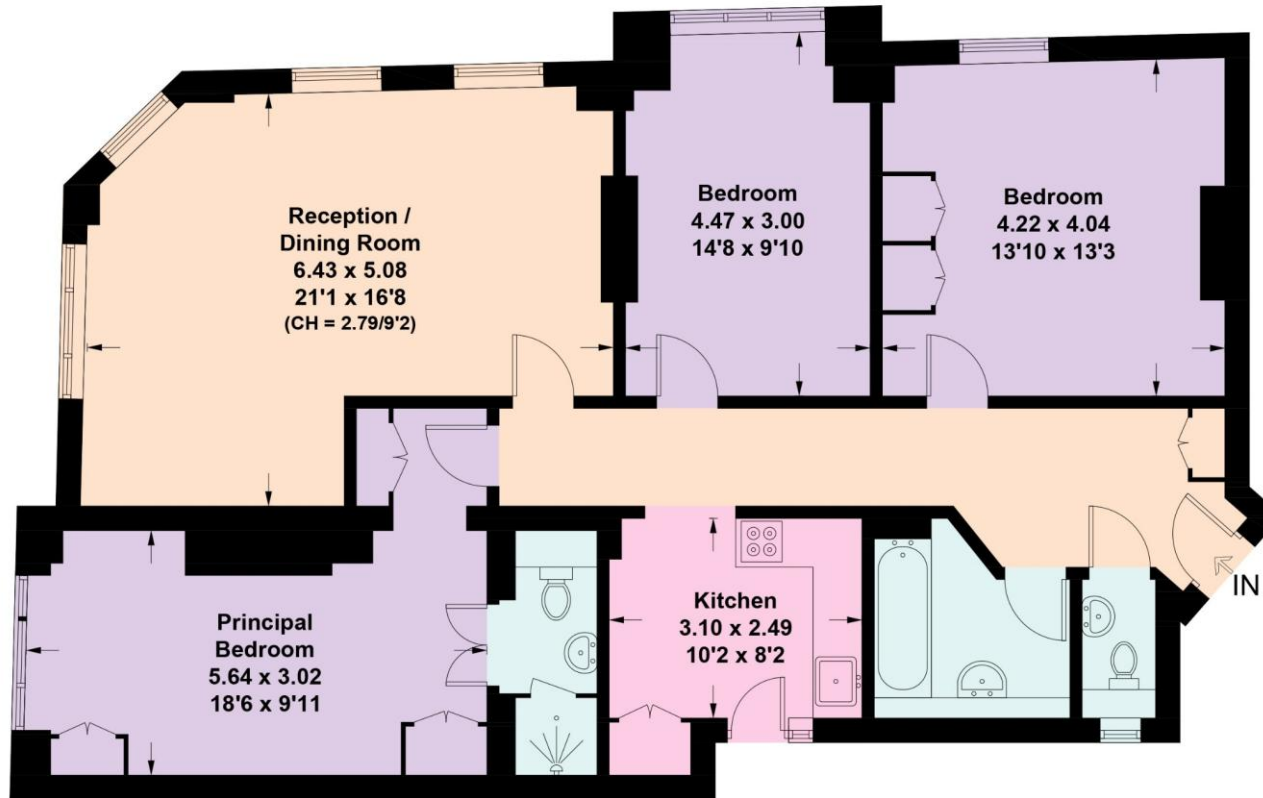
SW1X 9HX

knightsbridge@chestertons.co.uk

020 7235 8090

Ovington Court, Brompton Road, SW3

Approximate Floor Area = 117.6 sq m / 1266 sq ft
Including Limited Use Area (2.2 sq m / 24 sq ft)



Third Floor

This plan is for layout guidance only. Not drawn to scale unless stated. Windows and door openings are approximate. Whilst every care is taken in the preparation of this plan, please check all dimensions, shapes and compass bearings before making any decisions reliant upon them. (ID870064)

Chesterton UK Services Limited trading as Chestertons for themselves and for the vendor of this property whose agents they are, give notice that (i) these particulars do not constitute any part of an offer or contract, (ii) all statements contained within these particulars are made without responsibility on the part of Chestertons or the vendor, (iii) whilst made in good faith, none of the statements contained within these particulars are to be relied upon as a statement or representation of fact, (iv) any intending purchasers must satisfy themselves by inspection or otherwise as to the correctness of each of the statements contained within these particulars, (v) the vendor does not make or give either Chestertons or any person in their employment any authority to make or give representation or warranty whatsoever in relation to this property. Wide angle lenses may be used. ©Copyright Chestertons | Chesterton UK Services Limited | Registered Office 40 Connaught Street, Hyde Park, London W2 2AB Registered Company Number 05334580.



This paper is
100% recyclable