



jordan fishwick

Highgate Road Hayfield High Peak



Highgate Road Hayfield High Peak SK22 2JL

£299,995



The Property

Close to the centre of Hayfield, on one of the village's most picturesque roads, this charming and characterful stone-built end terrace cottage occupies a pleasant position within a small terrace of just three cottages and is available with no onward chain. Convenient for local amenities and countryside walks. The accommodation comprises: entrance vestibule, living room with open fire, fitted dining kitchen, downstairs WC, conservatory/sun room, two double bedrooms and a bathroom with a freestanding roll-top bath. Further benefits include gas central heating (with 8 year Worcester warranty), PVC double glazing, views towards St Matthew's Church, a walled frontage and an enclosed low-maintenance rear garden. Ideal home, holiday cottage or investment opportunity. Viewing recommended.



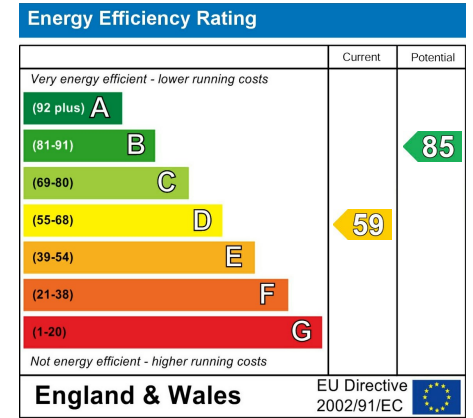
- Idyllic Location
- Convenient For Hayfield Amenities
- Two Generous Bedrooms
- Stone Built End Terrace
- Well Presented Throughout
- Ground Floor WC
- Enclosed Gardens
- Holiday Let Potential
- No Chain
- Views to St Matthew's Church

Postcode SK22 2JL

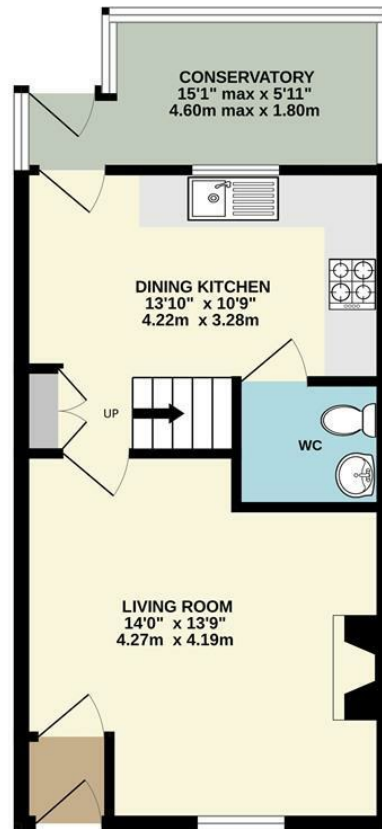
EPC Rating D

Local Authority High Peak

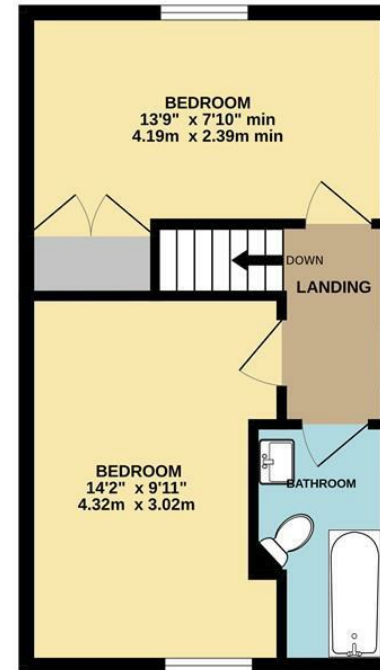
Council Tax B



GROUND FLOOR



1ST FLOOR



Whilst every attempt has been made to ensure the accuracy of the floorplan contained here, measurements of doors, windows, rooms and any other items are approximate and no responsibility is taken for any error, omission or mis-statement. This plan is for illustrative purposes only and should be used as such by any prospective purchaser. The services, systems and appliances shown have not been tested and no guarantee as to their operability or efficiency can be given.
Made with Metropix ©2026



These particulars are believed to be accurate but they are not guaranteed and do not form a contract. Neither Jordan Fishwick nor the vendor or lessor accept any responsibility in respect of these particulars, which are not intended to be statements or representations of fact and any intending purchaser or lessee must satisfy himself by inspection or otherwise as to the correctness of each of the statements contained in these particulars. Any floorplans on this brochure are for illustrative purposes only and are not necessarily to scale.

Offices at: Chorlton, Didsbury, Disley, Hale, Glossop, Macclesfield, Manchester Deansgate, Manchester Whitworth Street, New Mills, Sale, Wilmslow and Withington

14 Market St, Disley, Cheshire, Stockport SK12 2AA

01663 767878

disley@jordanfishwick.co.uk

www.jordanfishwick.co.uk