



COLVILLE ROAD, W11

£1,195,000

Two double bedrooms

Separate kitchen

Share of freehold

Second floor

Chain free

EPC - D

ABOUT THE PROPERTY

Bright, spacious and impeccably presented, this stylish two-bedroom apartment sits in the heart of Notting Hill, moments from Portobello Road, and benefits from a share of the freehold.

Colville Terrace is ideally positioned in the heart of Notting Hill, moments from the vibrant boutiques, cafés and renowned market stalls of Portobello Road, with Westbourne Grove's fashionable restaurants and shops close by. Excellent transport links are available from Notting Hill Gate and Ladbroke Grove stations, providing easy access across London.

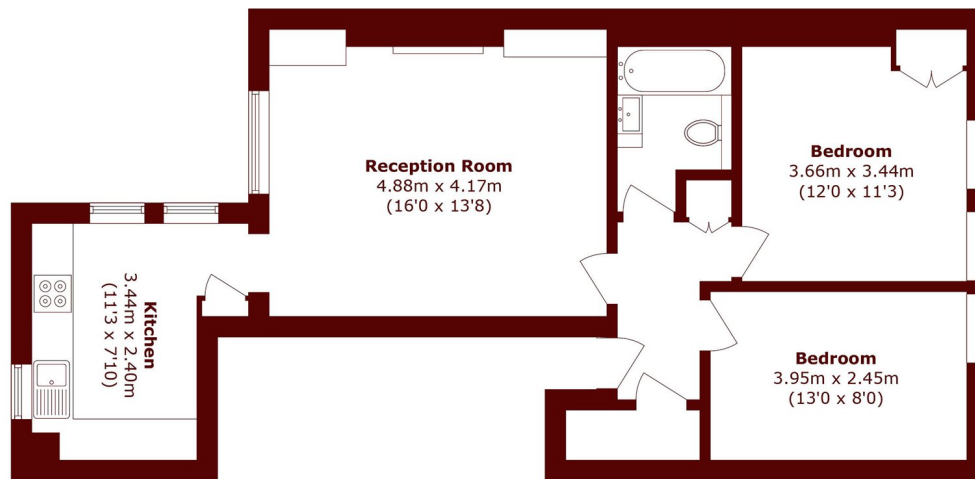








STEP INSIDE COLVILLE ROAD



Second Floor

Total area (approx.): 63.7 sq. m (685.6 sq. ft)

Notting Hill
020 7313 2890

Energy Rating: D We aim to make our particulars both accurate and reliable. However, they are not guaranteed; nor do they form part of an offer or contract. If you require clarification on any points then please contact us, especially if you're traveling some distance to view. Please note that appliances and heating systems have not been tested and therefore no warranties can be given as to their good working order

MARSH &
PARSONS