



Grahame Park Way, NW9

£1,625 Per calendar month

A purpose built one bedroom apartment on the fifth floor of this popular modern block with lift. This spacious property is in excellent condition with a double bedroom, living room with access to private balcony, bathroom/WC, and communal gardens

Heath Parade is within close proximity of an array of shops and restaurants and is a short distance (0.3 miles) from Colindale underground station.

Features

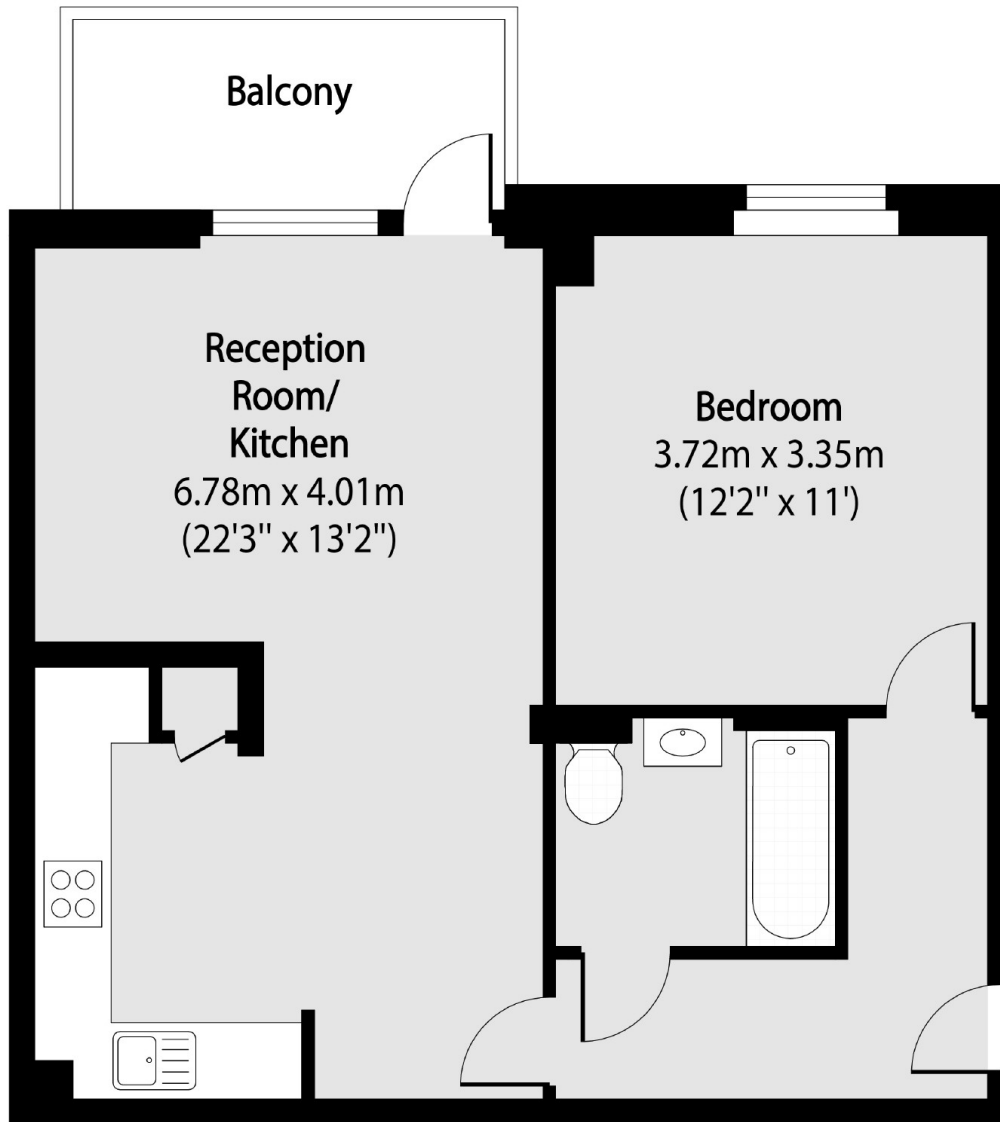
- Modern Block
- One Double Bedroom
- Private Balcony
- Close to Local Amenities
- Excellent Condition
- Communal Gardens



Grahame Park Way, NW9



Grahame Park Way,
London, NW9



Total area (approx): 50.78 sq m (547 sq. ft)

Balcony total area (approx): 4.80 sq m (52 sq. ft)

Dexters

Hendon
18 Central Circus
London
NW4 3AS
Lettings
020 8545 8587

Energy Rating: B. We aim to make our particulars both accurate and reliable. However they are not guaranteed; nor do they form part of an offer or contract. If you require clarification on any points then please contact us, especially if you're traveling some distance to view. Please note that appliances and heating systems have not been tested and therefore no warranties can be given as to their good working order.

 **RICS** | Regulated
Estate Agent
and Letting Agent

dexters.co.uk