



Cendal Crescent, E1

£425,000

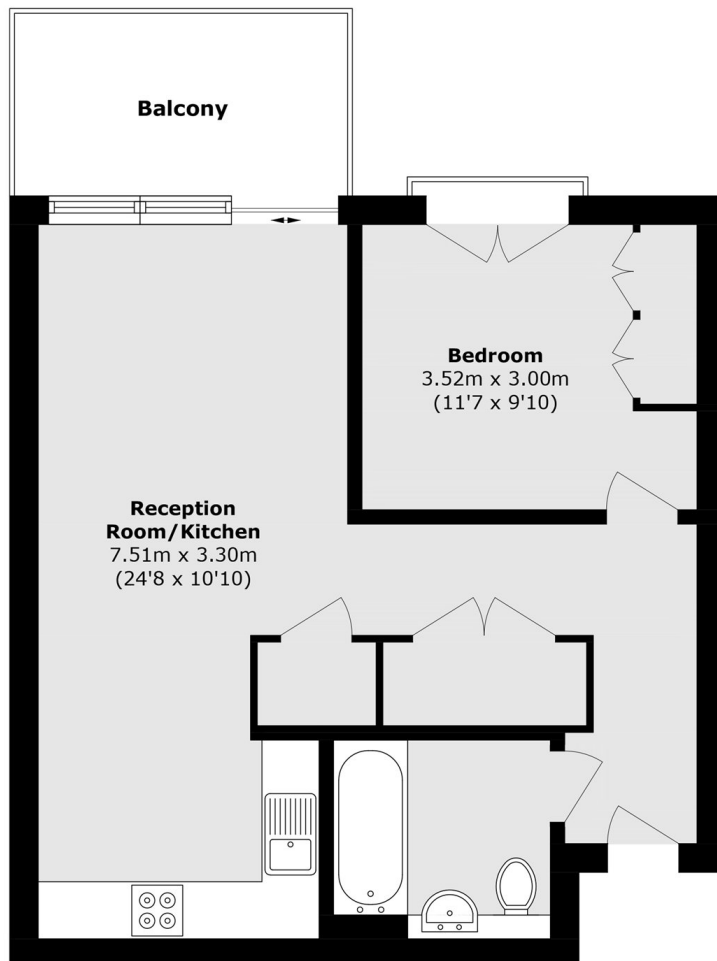
A one bedroom apartment with a private outside space in the sought after Silk District. The property features an open plan living room, with ample space to dine, which leads onto the main private balcony. The property includes a good size double bedroom with built-in storage space. The apartment also benefits from natural sunlight through out the day. The development offers a 24hr concierge with a lounge area, exclusive gym facilities, and a screening room/cinema for residents entertainment.

Set in the Silk District, this apartment is within easy reach of the cultural and vibrant areas of Shoreditch, Aldgate East, and the City giving access to some of the City's best bars, restaurants and shopping venues. Whitechapel Station (Elizabeth, District, Hammersmith&City and Overground lines) is close by for swift access to all corners of the City and beyond.

Features

- One bedroom
- Open plan kitchen
- Private balcony
- Natural sunlight
- Residential Gym
- Concierge

Cendal Crescent, London, E1



Total area (approx.): 50.4 sq. m (542.5 sq. ft)
Balcony area (approx.): 6.7 sq. m (72.1 sq. ft)