



Cossington Road, Erdington  
Birmingham, B23 5EJ

£190,000

# Erdington

£190,000



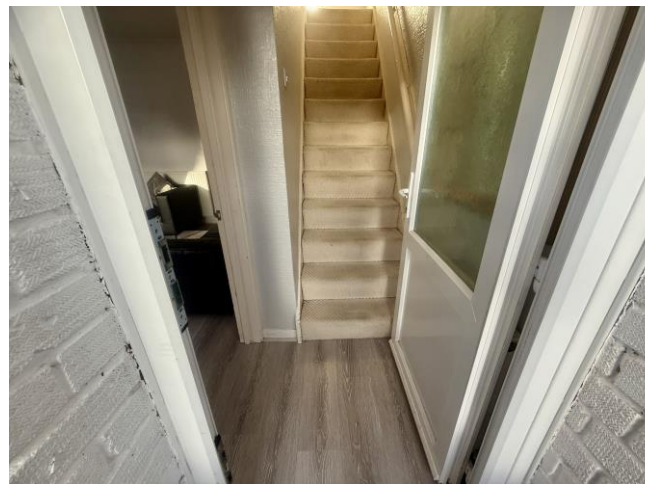
This conveniently located semi detached property sits within close proximity of many sought after local amenities including nearby parks, shops, schools and transport links.

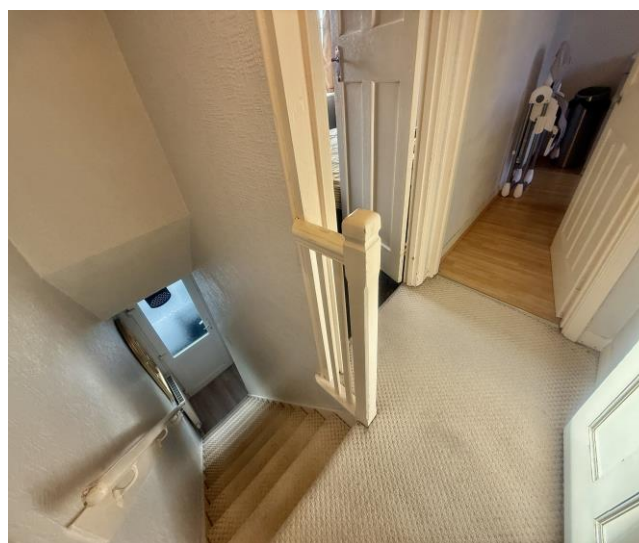
Accessed via an enclosed porch, the ground floor accommodation includes a well proportioned living room, a kitchen guest cloakroom and full width conservatory garden room.

To the first floor there are two well proportioned bedrooms complimented by an enlarged family bathroom with white suite.

Outside the home sits behind a block paved driveway providing off road parking and enjoys a mature garden to the rear.

An early viewing is essential in order to fully appreciate the opportunity on offer and avoid disappointment.





## Property Specification

THIS CONVENIENTLY LOCATED SEMI-DETACHED PROPERTY BRIEFLY COMPRISES;

Porch

Living Room 3.94m (12'11") x 2.00m (6'7")

Kitchen 3.14m (10'4") x 2.04m (6'8")

Lobby

WC

Conservatory

First floor landing, doors to;

Bedroom 1 4.89m (16') max x 2.95m (9'8")

Bedroom 2 2.72m (8'11") x 2.14m (7')

Bathroom

### Agent's Note:

Every care has been taken with the preparation of these Sales Particulars but they are for general guidance only and complete accuracy cannot be guaranteed. If there is any point which is of particular importance, professional verification should be sought. The mention of any fixtures, fittings and/or appliances does not imply they are in full efficient working order as they have not been tested. All dimensions are approximate. Photographs are reproduced for general information and it cannot be inferred that any item shown is included in the sale. These Sales Particulars do not constitute a contract or part of a contract. Came on the market: 8th January 2026

**Identity Verification Fee** - We are required by law to conduct anti-money laundering checks on all those buying a property as part of our due diligence. As agents acting on behalf of the seller, we are required to verify the identity of all purchasers once an offer has been accepted, subject to contract. The initial checks are carried out on our behalf by Lifetime Legal. A non-refundable administration fee of £40 + VAT (£48 including VAT) applies which covers the cost of obtaining relevant data and any manual checks and monitoring which might be required. This fee will need to be paid by you in advance of us issuing a memorandum of sale, directly to Lifetime Legal, and is non-refundable.

### Viewer's Note:

Services connected: Gas, electric, water and drainage  
Council tax band: B  
Tenure: Freehold

# Floor Plan

This floor plan is not drawn to scale and is for illustration purposes only



Total area: approx. 70.5 sq. metres (758.5 sq. feet)

## Energy Efficiency Rating

Score	Energy rating	Current	Potential
92+	A		
81-91	B		86 B
69-80	C		
55-68	D	64 D	
39-54	E		
21-38	F		
1-20	G		

## Map Location

