



Price
£365,000

Freehold

4x  3x  1x 

**Bramling Way, Rainham,
Gillingham, Kent, ME8**

Wards
Helping you move forwards



Main features

- Perfect first time or family home
- Useful downstairs cloakroom and two en-suite shower rooms
- Benefits from having a driveway
- Low maintenance rear garden
- Central and popular location close to the local amenities

Accommodation

GROUND FLOOR

Entrance Hall
Downstairs Cloakroom
Kitchen/Diner: 15'6 x 9'7 (4.73m x 2.92m)
Lounge: 16'8 x 11'3 (5.08m x 3.43m)

FIRST FLOOR

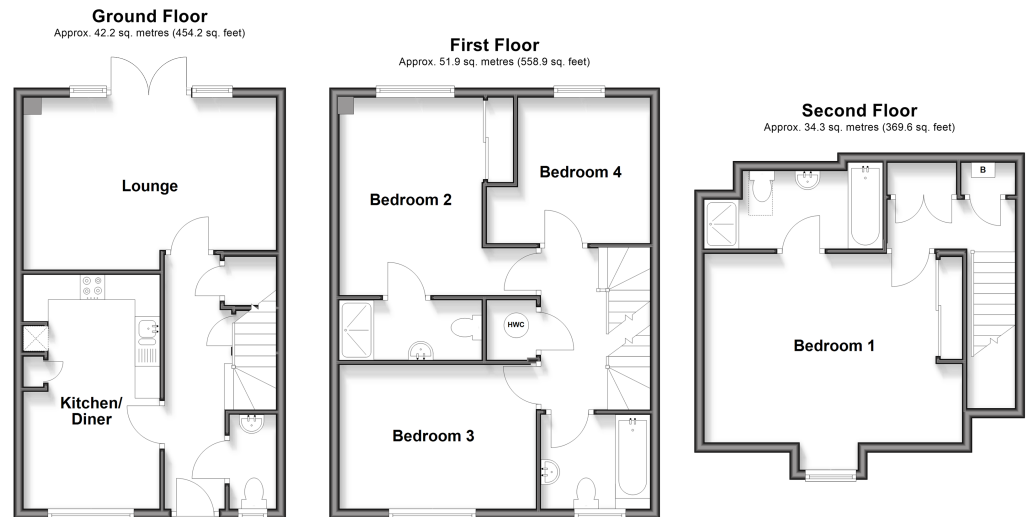
Landing
Bedroom 2: 13'1 x 11'5 (3.99m x 3.48m)
En-Suite Shower Room
Bedroom 3: 12'11 x 7'8 (3.94m x 2.34m)
Bedroom 4: 11'2 x 9'0 (3.41m x 2.75m)
Bathroom

SECOND FLOOR

Landing
Bedroom 1: 17'2 x 13'8 (5.24m x 4.17m)
En-Suite Shower Room

OUTSIDE

Front Garden
Rear Garden
Driveway



Call Rainham - 01634 373531 ■ wardsokent.co.uk

■ Legal advice should be taken to verify fixtures/fittings, planning, alterations and/or lease details

■ Appliances & services are untested, dimensions are approximate and floor plans are not to scale



11338179/20260316/CW/NJ