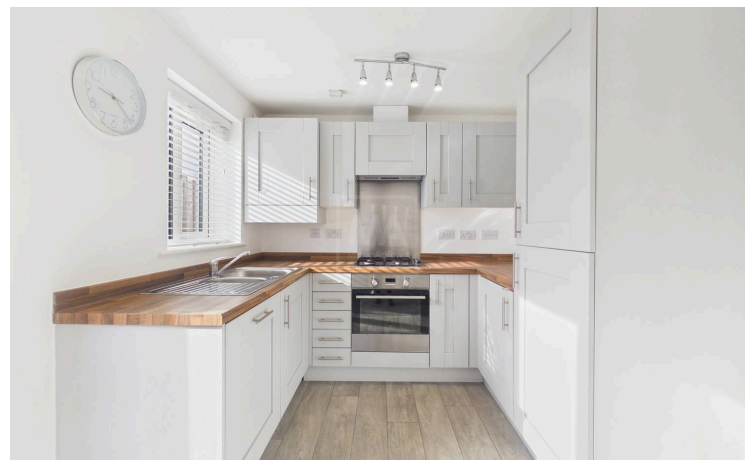




Mark Antony
SALES & LETTING AGENTS

To LET

Scarborough Drive, Newton-Le-Willows Unfurnished



PROPERTY DESCRIPTION

Beautifully presented two-bedroom home set on a quiet road. This charming property is ideal for families, located just a short walk from the scenic Sankey Valley trails as well as nearby schools and nurseries.

The ground floor offers a spacious living room, a convenient WC, and a modern kitchen complete with integrated appliances and ample space for a dining table.

Upstairs, you'll find two generously sized double bedrooms and an exquisite family bathroom finished to a high standard.

- Two Double Bedrooms
- Off Road Parking
- Large Garden
- Walking Distance to Schools and Nurseries
- Beautifully Decorated
- Modern Kitchen
- Integrated Appliances
- Access to Sankey Valley



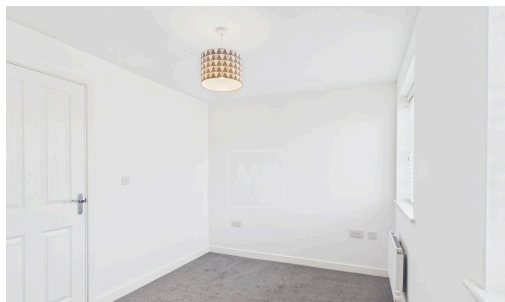
NOTE TO PROSPECTIVE TENANTS

- › Off Road Parking
- › Pets may be considered
- › Fridge Freezer, Oven, Hob, Extractor Hood, Washing Machine and Dishwasher included

GENERAL INFORMATION

- › Council Tax Band: B
- › EPC Rating: B

RENTAL AVAILABLE NOW



£50 *and they sign up fully managed with us. **FOR YOU!**
if you refer a
Warrington landlord*



Note: These details have been prepared as a general guide only and do not constitute any part of any contract. The function of any appliances, services, sockets or cables are not guaranteed. Any interested party should satisfy themselves about any matter of importance to them and not rely on the contents of these particulars when making the decision to offer.

