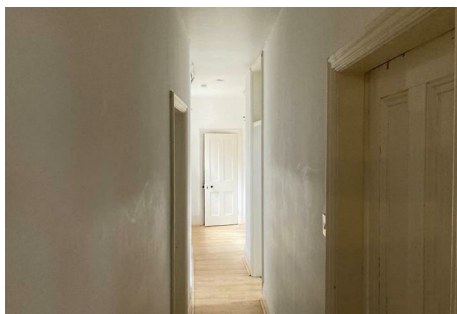


PARKER JAMES

ESTATES

Established since 1995



Huguenot Mansions

Huguenot Place SW18 2EW

- Available 18th June
- Mansion block
- Balcony
- Kitchen/breakfast room
- Close to pubs and restaurants
- First floor
- Street level entrance
- Three double bedrooms
- Wandsworth Town station nearby
- Wandsworth Common minutes away

£2,850 Per Week

Huguenot Mansions

Huguenot Place SW18 2EW



Available from the 18th of June on a furnished basis is this three double bedroom first floor flat within a mansion block in Wandsworth.

The 81 sqm property, which is one of two sharing a street level entrance on Melody Road, briefly comprises an entrance hall, reception room with space for dining and a door opening onto a small front facing balcony, fitted kitchen/breakfast room also with a door opening onto the balcony, three double bedrooms and a bathroom.

Huguenot Place is a short walk from Wandsworth Town (South Western Railway) station which provides a fast service into London Waterloo and London Victoria and a good range of shops can be found on the road including a Co-op Food, local pubs and restaurants are on nearby Old York Road whilst pleasant open space can be enjoyed on Wandsworth Common.



[Directions](#)





Floor Plan

These particulars, whilst believed to be accurate are set out as a general outline only for guidance and do not constitute any part of an offer or contract. Intending purchasers should not rely on them as statements of representation of fact, but must satisfy themselves by inspection or otherwise as to their accuracy. No person in this firm's employment has the authority to make or give any representation or warranty in respect of the property.



48 Warwick Street Soho, London, W1B 5NL
Tel: 020 7287 4244 Email: management@parkerjamesestates.co.uk parkerjamesestates.co.uk

