



Oaklands Road, Totteridge, N20 8AX  
£2,495,000 Freehold Council Tax Band H

**REAL ESTATES**  
Est.1981

Estate Agents · Residential Sales · Investments · Lettings

Real Estates are delighted to present this beautifully maintained five-bedroom, three-bathroom detached family home, ideally located in the highly sought-after area of Totteridge.

Arranged over two floors, the property offers over 3,000 sq ft of generous living space, including four reception rooms, making it perfectly suited for both family living and entertaining. To the rear, the home boasts a stunning landscaped garden extending over 120 ft, complete with a private swimming pool, pool house, and a secluded patio area. Additional benefits include a driveway providing off-street parking and a garage to the front.

Situated just 9 miles from Central London, Totteridge combines the charm of countryside living with excellent connectivity. The area is surrounded by greenbelt land and offers a variety of leisure facilities, including South Herts Golf Club, local tennis and cricket clubs, and equestrian opportunities. Totteridge Green is home to the historic The Orange Tree, a renowned public house dating back to 1665.

Transport links are excellent, with Totteridge & Whetstone Underground Station providing direct access to the Northern Line. Nearby Whetstone Shopping Centre offers a range of amenities including Marks & Spencer, Boots, and Waitrose, along with a selection of boutiques and restaurants. Major road links such as the M25, A1(M), and M1 are also easily accessible, as is Brent Cross Shopping Centre.

Viewing is highly recommended and strictly via the seller's sole agent.





# Oaklands Road, London, N20

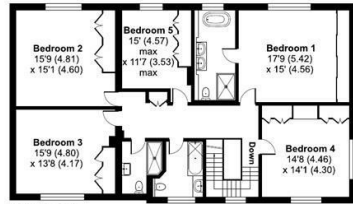
Approximate Area = 3001 sq ft / 278.8 sq m

Garage = 315 sq ft / 29.2 sq m

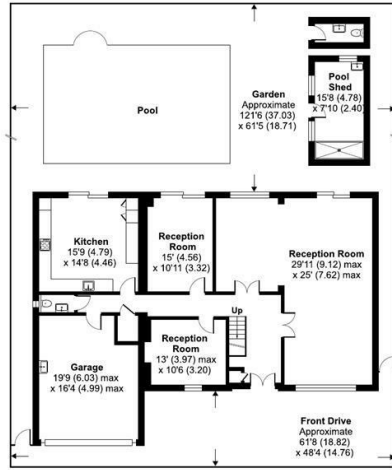
Outbuildings = 147 sq ft / 13.6 sq m

Total = 3463 sq ft / 321.6 sq m

For identification only - Not to scale



FIRST FLOOR



GROUND FLOOR

Floor plan produced in accordance with RICS Property Measurement 2nd Edition, incorporating International Property Measurement Standards (IPMS2 Residential). © nchocom 2026. Produced for Real Estates. REF: 1437888

Energy Efficiency Rating		Current	Potential
Very energy efficient - lower running costs			
A	92-100		
B	81-91		
C	69-80	72	79
D	55-68		
E	39-54		
F	21-38		
G	1-20		
Not energy efficient - higher running costs			
EU Directive			

