



Stratton Street

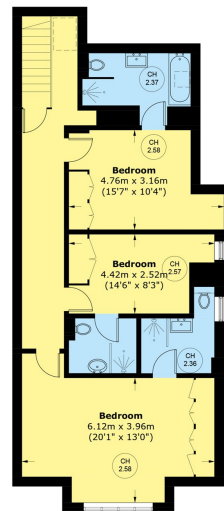
Mayfair W1J



Positioned within a portered building on the prestigious Stratton Street, this impeccably presented three bedroom, three bathroom penthouse apartment offers luxury living in the heart of Mayfair.



Fourth Floor



Fifth Floor

Total area (approx.): 169.3 sq. m (1,822.2 sq. ft)
Outbuilding: 4.1 sq. m (44.1 sq. ft)

This brand new renovation is thoughtfully designed to maximise space and light. It features high ceilings that enhance the sense of openness, and large windows that allow for excellent natural light.

The apartment offers well proportioned lateral living, featuring three large double bedrooms, each with a stylish en-suite bathroom. A separate guest WC adds further convenience.

The front reception room provides an impressive space for entertaining or relaxing, with high ceilings and large windows. The fully integrated kitchen

FEATURES

- Duplex Penthouse
- Three Spacious Double Bedrooms
- Porter
- Air Conditioning
- 24hr CCTV
- High Quality Furnishings

Price: £4,385 Per week

We aim to make our particulars both accurate and reliable. However they are not guaranteed; nor do they form part of an offer or contract. If you require clarification on any points then please contact us, especially if you're traveling some distance to view. Please note that appliances and heating systems have not been tested and therefore no warranties can be given as to their working order. Energy Rating: C

Stratton Street is an attractive address in the heart of Mayfair, moments away from the renowned shopping of Bond Street and Oxford Street.

The location offers excellent transport links and is within walking distance of Green Park, providing easy access to both the West End's cultural attractions and the tranquil green spaces of central London.



WETHERELL
MAYFAIR'S FINEST PROPERTIES

102 Mount Street • London • W1K 2TH
T: 020 7529 5588 E: rentals@wetherell.co.uk

wetherell.co.uk

NO ONE KNOWS MAYFAIR BETTER THAN WETHERELL