



Manor Road, Brize Norton

Guide Price £800,000



Poplars Barn Manor Road

Brize Norton, Carterton

Set within approximately 0.35 acres of landscaped grounds, this exceptional barn conversion spans over 3000sqft and is offered to the market with no onward chain.

Council Tax band: TBD

Tenure: Freehold

EPC Energy Efficiency Rating: D

EPC Environmental Impact Rating: D

- Brought to market with no onward chain.
- Situated on a 0.35 acre plot with open countryside views.
- Garage and off-street parking for multiple cars.
- Requiring some modernisation throughout.
- Spa area with sauna and hot tub.
- Sitting room with mezzanine level, fireplace and exposed stone walls.
- Open plan kitchen/dining room with aga and french doors leading out to the rear garden.
- Five bedrooms, two with ensuite bathrooms.



Manor Road - Brize Norton

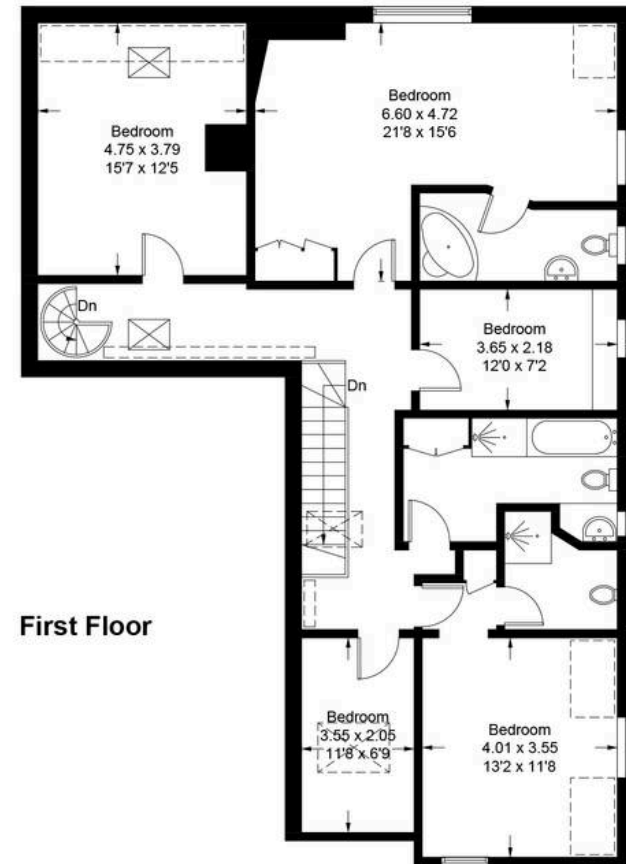
Approximate Gross Internal Area = 291.2 sq m / 3134 sq ft
(Including Mezzanine)

Garage / Utility = 18.9 sq m / 203 sq ft

Total = 310.1 sq m / 3337 sq ft



Ground Floor



First Floor

Illustration for identification purposes only, measurements are approximate, not to scale. Fourlabs.co © (ID1302832)



Simpsons Witney Branch

4 Langdale Court Witney, Oxfordshire - OX28 6AD

01993 835030 • witney@simpsonsproperty.com • www.simpsonsproperty.com/