



The Hawthorns, Ongar, CM5

BUTLER & STAG



**Welcome to The Hawthorns, Fyfield a stunning collection of 23 beautifully designed new homes, perfectly located in the picturesque village of Fyfield, Essex. A range of thoughtfully crafted three, four, and five-bedroom detached and semi-detached homes are available, each built to an exceptional standard and finished with premium specifications throughout.**



## Freehold

- Exclusive New Build Development - 3, 4 & 5 detached and semi-detached homes.
- The Hever - four bedroom, three bathroom home finished to a premium standard.
- Open-plan kitchen/dining space with quartz countertops & bespoke design.
- Underfloor heating to ground floor & bathrooms.

The Hever – Positioned towards the rear of the development, these beautifully designed, semi-detached homes offer four-bedrooms across three spacious floors with stylish contemporary features throughout.

A welcoming hallway leads into a bespoke kitchen with high-end finishes. The open-plan layout effortlessly flows into a bright dining area and a spacious living area at the rear, complete with French doors that open onto a beautiful patio and garden, offering an ideal space for relaxation and entertaining.

The ground floor also features a downstairs WC for added convenience.

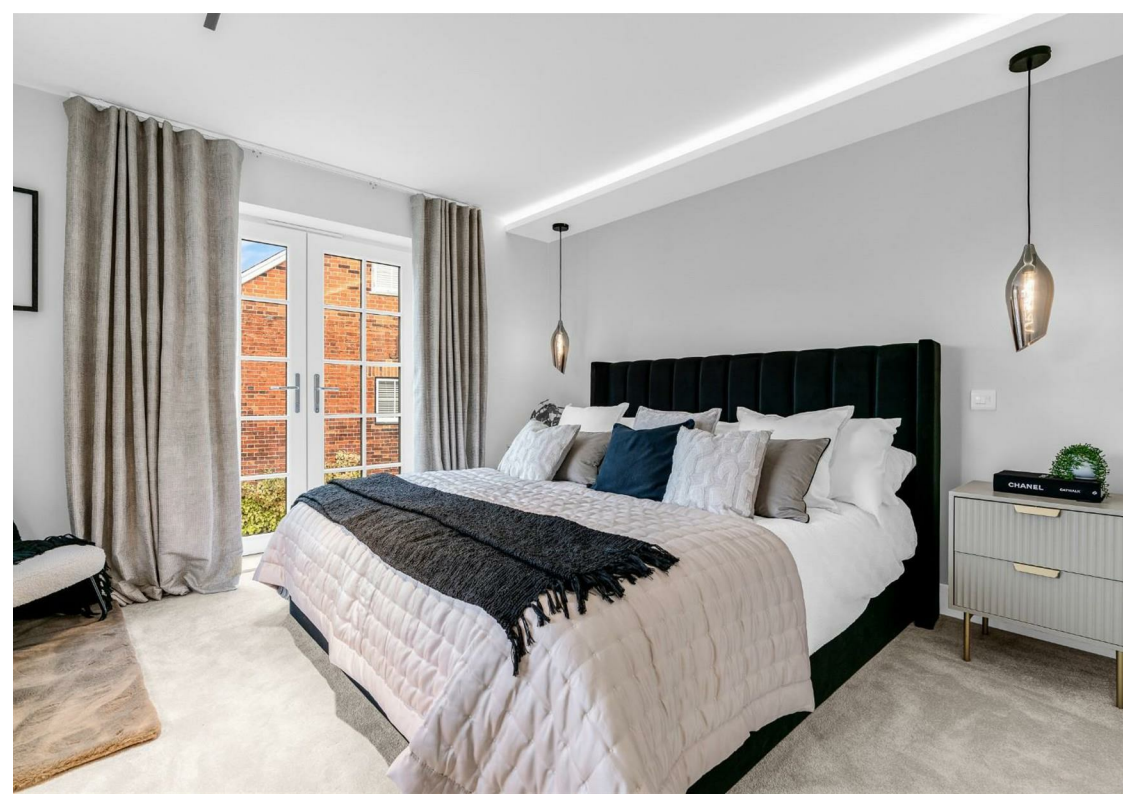
Upstairs, the second floor is dedicated to the master bedroom, which spans the entire floor, providing an exceptional space. It includes built-in wardrobes and a luxurious en-suite bathroom, as well as ample eaves storage.

Positioned on the first-floor bedroom two also benefits from built-in wardrobes and its own en-suite. Bedrooms three is a spacious double, while bedroom four offers versatile use as a guest room, children's bedroom, or home office.

Outside, the property enjoys a generously sized garden with a patio area, perfect for outdoor dining, entertaining, or simply unwinding in the sun. The property benefits from two allocated parking spaces - one located under a car port (complete with an Electric Vehicle Charging Point) and another additional off-road parking space.

The development is situated on the perimeter of this highly regarded country village, just 25 miles from the City of London. The development occupies a semi-rural location and is within walking distance of the village centre with its shop, bars/restaurants (The Queen's Head and The Black Bull).

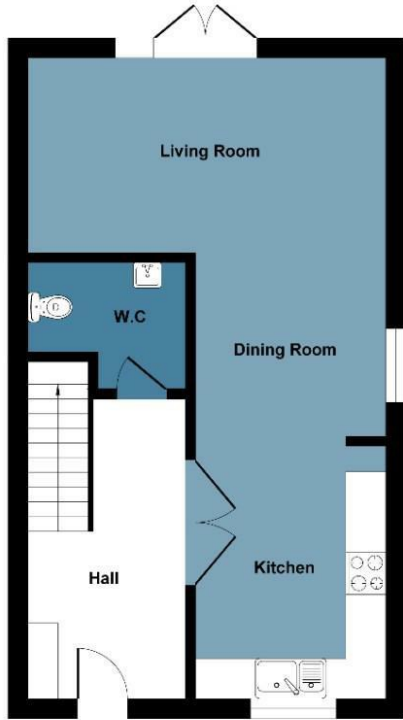




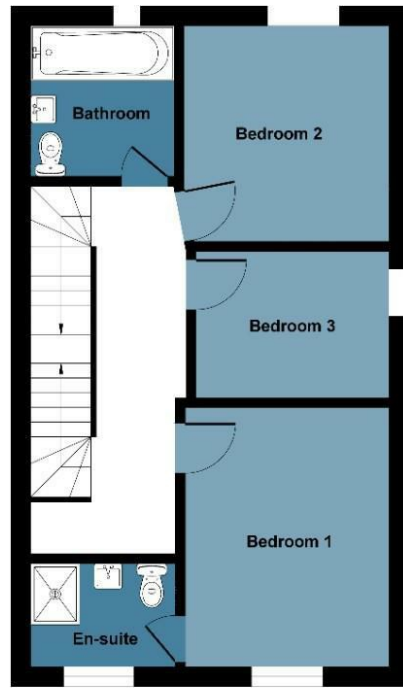
# The Hever

Approx. Gross Internal Area 137.4 sq M ( 1480 sq Ft)

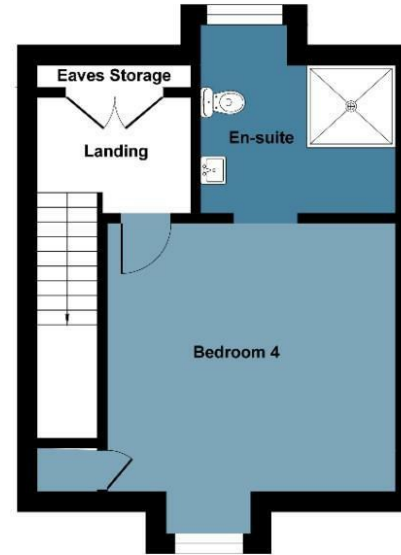
**BUTLER & STAG**



Ground Floor



First Floor



Second Floor

Measurements are approximate and for illustration purposes only, while we do not doubt the accuracy and completeness, we advise you conduct independent assessment of the property to determine monetary value.  
© @ modephoto.uk www.modephoto.co.uk

**BUTLER & STAG**

☎ 01992 667666

🏠 4 Forest Drive, Theydon Bois, Essex, CM16 7EY

✉ theydon@butlerandstag.com

IMPORTANT NOTICE - These particulars have been prepared in good faith and they are not intended to constitute part of an offer or contract. We have not performed a structural survey on this property and the services, appliances and specific fittings have not been tested. All photographs, measurements, floor plans and distances referred to are given as a guide and should not be relied upon.

[www.butlerandstag.uk](http://www.butlerandstag.uk)