



Queen's Gate Terrace, SW7

£657 Per week

Dexters



Queen's Gate Terrace, SW7

A newly refurbished one-bedroom apartment situated on the raised ground floor of an elegant period conversion. The property boasts wood flooring throughout, high ceilings, and ample built-in storage, offering a bright and well-appointed living space.

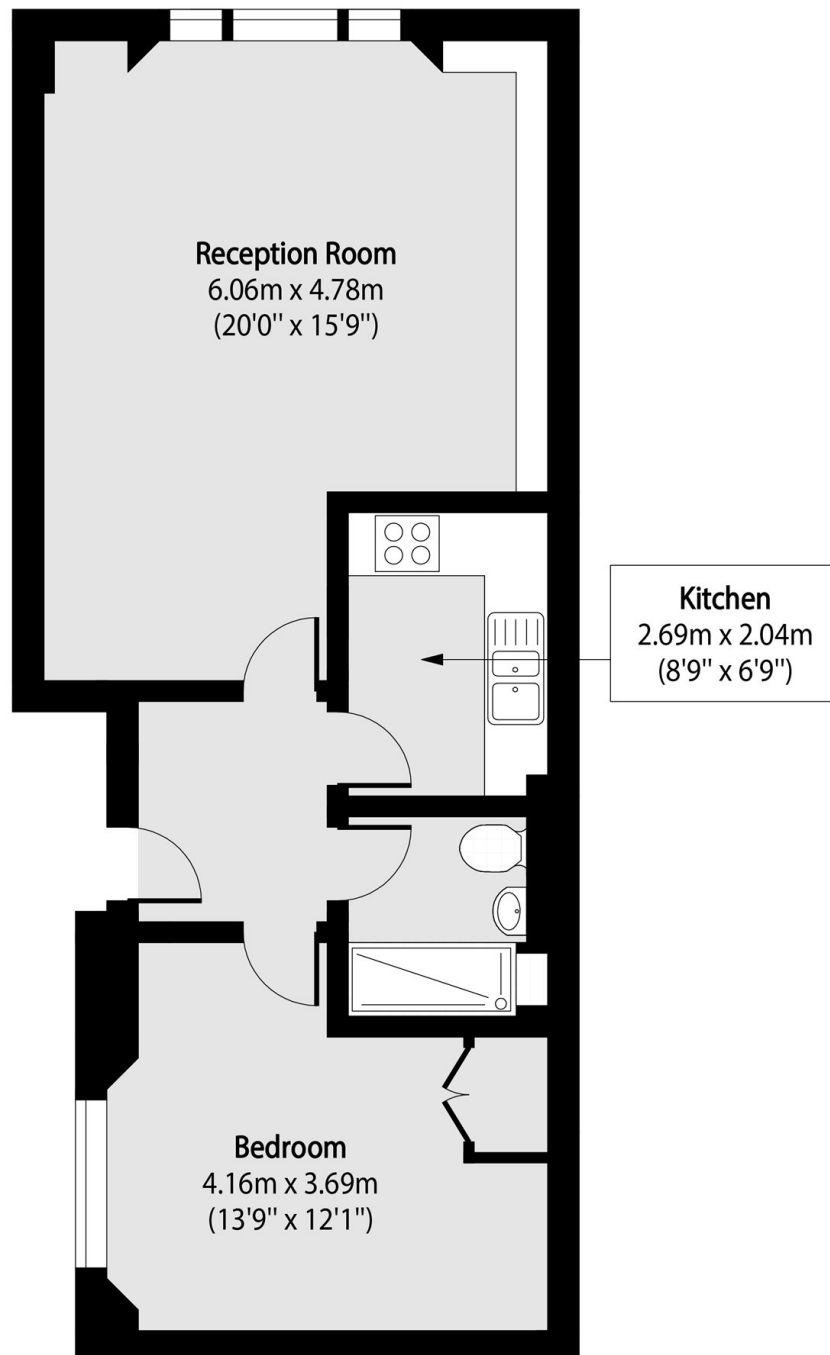
Queen's Gate Terrace is positioned between Gloucester Road and Queen's Gate, providing convenient access to the main high streets of South Kensington, as well as Imperial College and Kensington. Gloucester Road Underground Station is the nearest transport link.

Features

- One Double Bedroom
- Refurbished
- Wooden Flooring
- High Ceilings
- Separate Kitchen
- Built-In Storage



Queen's Gate Terrace,
London, SW7



Total area (approx): 53.95 sq m (581 sq. ft)