



KENSINGTON PARK ROAD, W11

£1,495,000

Wonderful lateral space
Stunning views
Great light
Concierge
Access to Ladbroke Square Gardens
EPC- C

@marshandparsons
marshandparsons.co.uk

MARSH &
PARSONS



ABOUT THE PROPERTY

A wonderful opportunity to acquire a rarely available, unmodernised, three-bedroom apartment within this highly sought after red brick portered building.

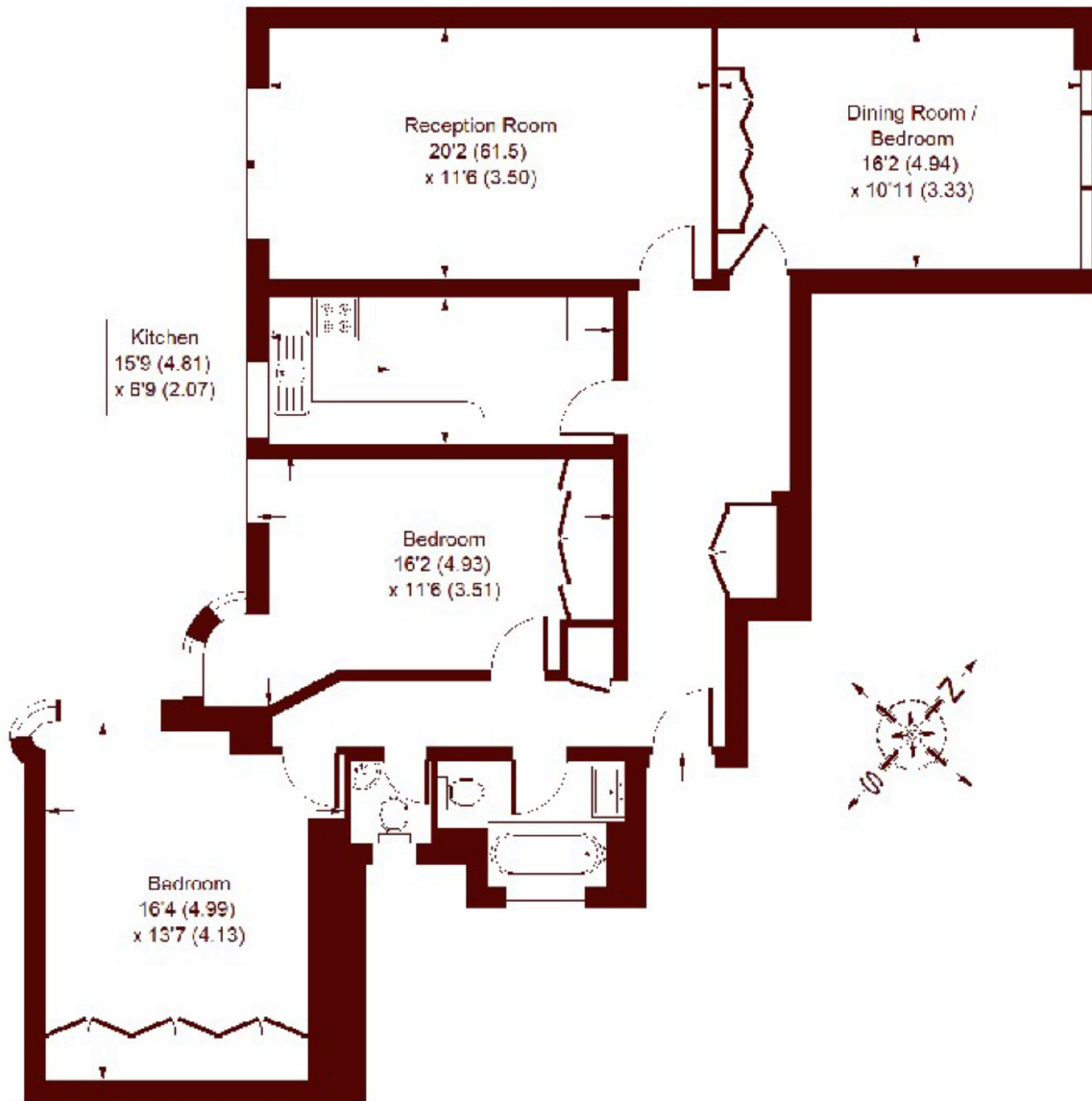
Princes House is wonderfully positioned on the southern end of Kensington Park Road, just a short stroll from the vast green open space of Kensington Gardens with a fantastic array of boutique shops, cafes and restaurants on Kensington Park Road and Westbourne Grove, whilst the world-renowned Portobello Road is just around the corner. There are excellent transport links available from Notting Hill Gate with easy access to the Central, Circle and District lines.



STEP INSIDE KENSINGTON PARK ROAD

Princes House, W11

APPROX. GROSS INTERNAL FLOOR AREA
1213 SQFT / 112.7 SQM



FOURTH FLOOR

Whilst every attempt has been made to ensure the accuracy of the floor plan, measurements are approximate and not to scale. No guarantee is given on the total square footage of the property quoted on the plan. Figures given are for guidance. Plan is for illustration purposes only, not to be used for valuations.

Notting Hill
020 7313 2890

Energy Rating: C We aim to make our particulars both accurate and reliable. However, they are not guaranteed; nor do they form part of an offer or contract. If you require clarification on any points then please contact us, especially if you're traveling some distance to view. Please note that appliances and heating systems have not been tested and therefore no warranties can be given as to their good working order.

MARSH &
PARSONS