

# FLAMBARD WAY



# FLAMBARD WAY

GODALMING, SURREY, GU7 1FJ

An impressive apartment within this prestigious luxury development in the centre of Godalming offering stylish accommodation and with a private balcony. Secure underground parking and bike store.

Available: 11th September 2026

£1,400 PCM (Per Calendar Month)

Flat, 1 Bedroom, 1 Bathroom, 1 Reception,  
Unfurnished

## Key Features

- One Bedroom Apartment
- Large Private Balcony
- Underground parking
- High specification
- Town Centre
- Views





## THE PROPERTY

Superbly presented throughout to a high specification this third floor apartment offers a stylish interior design scheme.

Located on the third floor, Front door leads to the entrance hall with a good size store cupboard housing the washer/dryer.

A fabulous open plan kitchen living space with lovely views over the Town Centre and beyond. Kitchen comprises integrated dishwasher, fridge/freezer. Good size double bedroom with deep built in wardrobe and French doors opening to the private balcony. Access from the hallway to a good size private balcony with lovely far reaching views. A modern bathroom suite with a rainfall shower over the bath.



The well-maintained communal hallways and gardens generate a welcoming first impression, while an underground parking space provides convenient off-road parking. Secure bike store. The apartment is conveniently located right in the very heart of Godalming, extremely convenient for all the high street stores, pubs, cafes and restaurants, as well as Waitrose and Sainsbury's supermarkets. Godalming mainline station is a level 0.5 mile walk, serving London Waterloo in about 47 minutes. Walks along the banks of the River Wey are also readily accessible, whilst all the comprehensive amenities provided by the County Town of Guildford are some four miles away.

EPC Rating B

Council Tax - Band C - Waverley - £2,349.63 per annum

Utilities - Mains gas, electric, water and waste

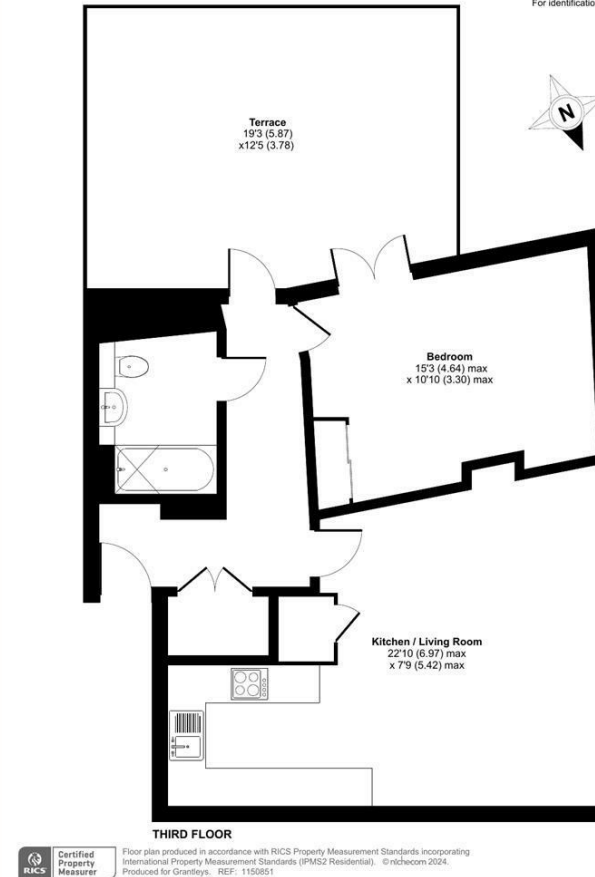
Pets to be considered on a case by case basis

To check broadband and mobile phone coverage please visit Ofcom website:  
[ofcom.org.uk/phones-and-broadband/coverage-and-speeds/ofcom-checker](https://ofcom.org.uk/phones-and-broadband/coverage-and-speeds/ofcom-checker)



## Flambard Way, Godalming, GU7

Approximate Area = 659 sq ft / 61.2 sq m  
For identification only - Not to scale



## Godalming Lettings

26 Church Street  
Godalming  
Surrey  
GU7 1EW

Tel: 01483 407630

