



Connells

Slate Drive
Kettering



Property Description

Located within a popular residential area, this well-presented detached family home offers generous living accommodation, a practical and flexible layout, and excellent outdoor space — making it an ideal choice for families seeking a long-term forever home.

The property benefits from a driveway positioned to the side of the house, leading through to a garage, providing convenient off-road parking along with additional storage. On entering the home, a welcoming entrance hall gives access to a ground floor WC and a useful utility room, perfectly suited to the demands of modern family living.

At the heart of the home is the spacious kitchen/diner, offering plenty of room for family meals, entertaining and everyday living. This sociable space opens into a bright conservatory, which enjoys views over the rear garden and creates a versatile additional reception area. A separate, well-proportioned lounge provides a comfortable and relaxing space for quieter moments.

To the first floor, the property offers four generously sized bedrooms, providing flexibility for growing families, home working or guest accommodation. The principal bedroom benefits from its own en-suite shower room, while the remaining bedrooms are served by a well-appointed family bathroom accessed from the central landing.

Outside, the enclosed rear garden provides a private and secure space, ideal for children, pets and outdoor entertaining.

Ground Floor

Entrance Hall

Entrance door to the front, stairs leading to the first floor, laminate flooring, radiator.

Cloakroom

Window to the front, wash hand basin, low level WC.

Utility Room

External door to the side, a range of wall and base units with rolled edge work surfaces, sink drainer with mixer tap.

Kitchen / Diner

Window to the rear, bi-fold doors leading to the conservatory, a range of wall and base units with rolled edge work surfaces, sink drainer with mixer tap, integrated oven and hob with cooker hood, integrated appliances, fire place with log burner, laminate flooring, radiator.

Lounge

Window to the front and side, fireplace with log burner, radiator, carpet flooring.

Conservatory

French patio doors to the side, windows all the way round, laminate flooring.

First Floor

Landing

Bedroom One

Window to the front, built in wardrobes, radiator, carpet flooring.

Ensuite

Window to the side, walk in shower cubicle, wash hand basin, low level WC, heated towel rail, vinyl flooring.

Bedroom Two

Window to the front, radiator, carpet flooring.

Bedroom Three

Window to the rear, radiator, carpet flooring.

Bedroom Four

Window to the rear, radiator, carpet flooring.

Bathroom

Window to the rear, bath with mixer tap, wash hand basin, low level WC, tiled splash backs. vinyl flooring.

Externally

To The Front

Pedestrian pathway leading to entrance, established shrubbery, laid to lawn.

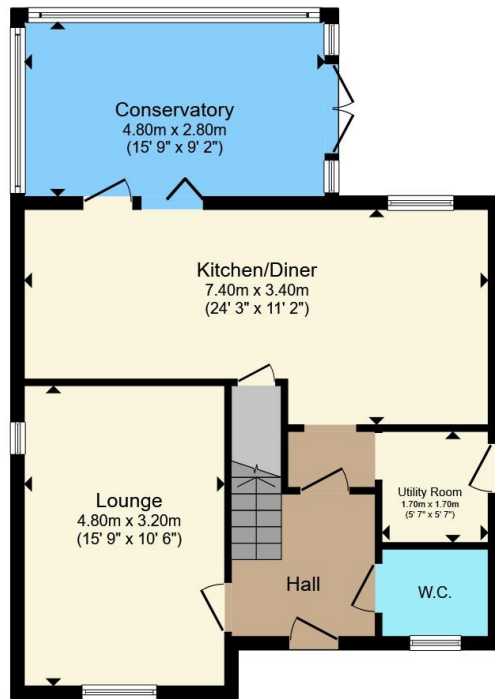
Rear Garden

Fully enclosed by timber fencing, gated side access, laid to lawn, patio area, decking area, flower beds.

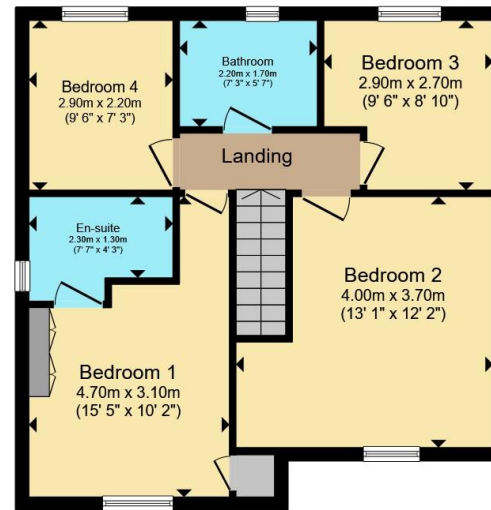








Ground Floor



First Floor

Total floor area 121.0 m² (1,302 sq.ft.) approx

This floor plan is for illustrative purposes only. It is not drawn to scale. Any measurements, floor areas (including any total floor area), openings and orientation are approximate. No details are guaranteed, they cannot be relied upon for any purpose and they do not form part of any agreement. No liability is taken for any error, omission or misstatement. A party must rely upon its own inspection(s). Powered by www.propertybox.io



To view this property please contact Connells on

T 01536 411 811
E kettering@connells.co.uk

5 Montagu Street
 KETTERING NN16 8XG

EPC Rating: B Council Tax
 Band: E

Tenure: Freehold

view this property online connells.co.uk/Property/KTT308387



1. MONEY LAUNDERING REGULATIONS Intending purchasers will be asked to produce identification documentation at a later stage and we would ask for your co-operation in order that there will be no delay in agreeing the sale. 2. These particulars do not constitute part or all of an offer or contract. 3. The measurements indicated are supplied for guidance only and as such must be considered incorrect. Potential buyers are advised to recheck measurements before committing to any expense. 4. We have not tested any apparatus, equipment, fixtures, fittings or services and it is in the buyers interest to check the working condition of any appliances.

Connells Residential is registered in England and Wales under company number 1489613, Registered Office is Cumbria House, 16-20 Hockliffe Street, Leighton Buzzard, Bedfordshire, LU7 1GN. VAT Registration Number is 500 2481 05.

See all our properties at www.connells.co.uk | www.rightmove.co.uk | www.zoopla.co.uk

Property Ref: KTT308387 - 0004