

DAVID CHARLES

ESTATE AGENTS • VALUERS

THE ESTATE OFFICE • 34 HIGH STREET • PINNER • MIDDLESEX HA5 5PW

TELEPHONE 020 8866 0222

WEBSITE www.david-charles.co.uk • E-MAIL enquiries@david-charles.co.uk

CHURCHILL COURT, NUGENTS PARK, HATCH END, HA5 4QX



PRICE....£1,650PCM....UNFURNISHED

This well presented first floor two double bedroom apartment (883 sq.ft/82 sq.m) is set in this extremely desirable block of only four apartments, which is located in a private turning off the Uxbridge Road. It is within minutes walk of Hatch End Broadway with its array of shops, restaurants, coffee houses, supermarkets and the Overground Train Station. The accommodation comprises a large 18'7ft dual aspect reception room, 13'5ft fitted kitchen, 13'8ft bedroom one with fitted wardrobes and an en-suite shower room, 12'8ft bedroom two with fitted wardrobes and a family bathroom/WC. Outside there are well kept communal gardens and residents parking. Unfurnished. Available Immediately (Subject to References).

020 8866 0222









COUNCIL TAX

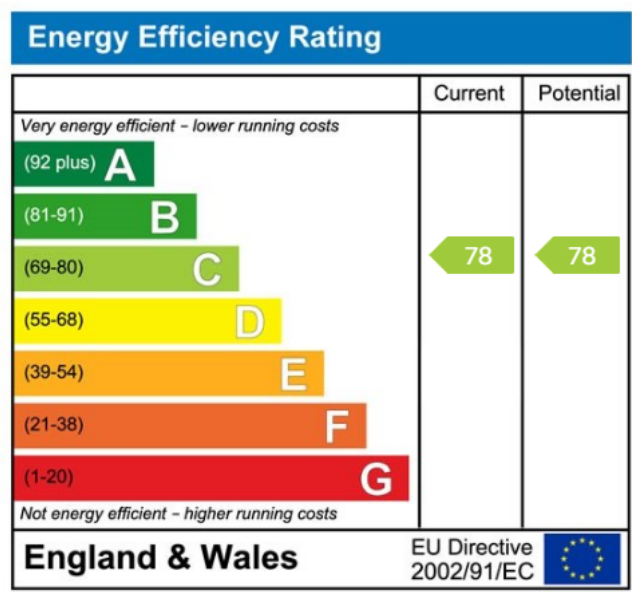
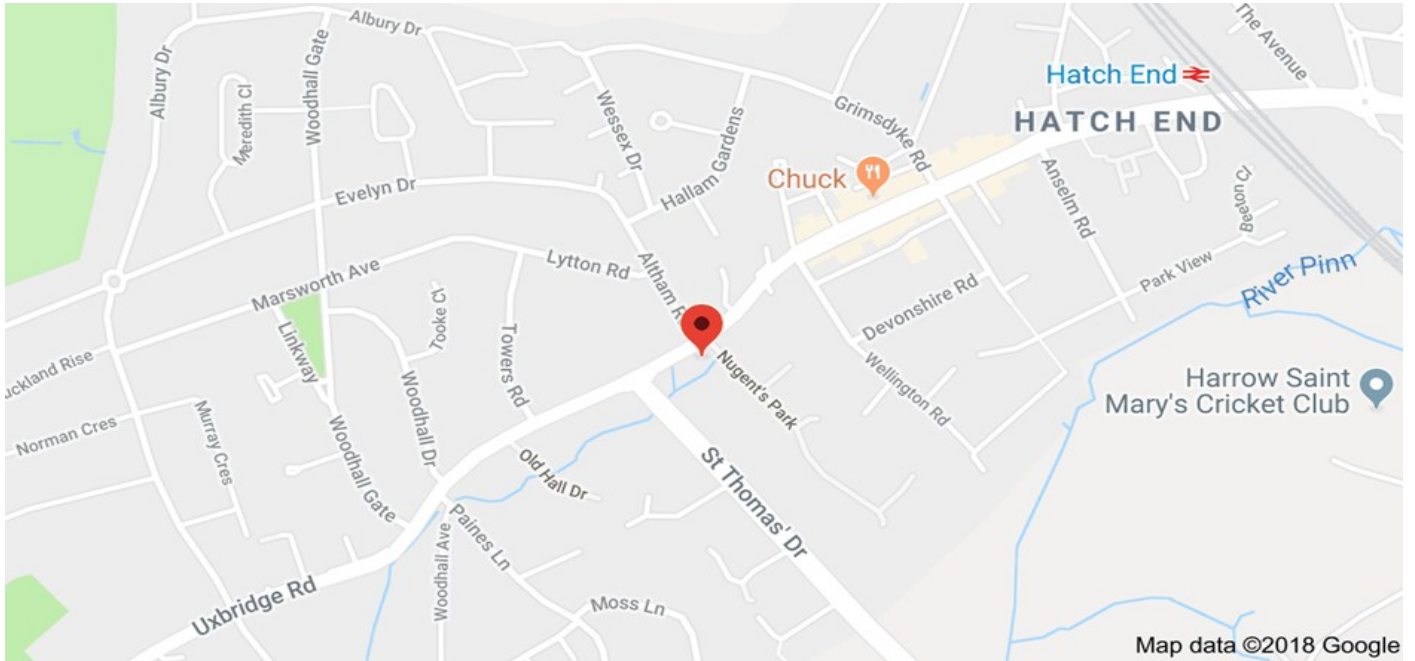
London Borough of Harrow - Band F - £3,460.69

LOCAL SCHOOLS

Grimsdyke School - 0.5 Miles
Pinner Wood School - 0.7 Miles

LOCAL TRANSPORT

Hatch End - 0.5 Miles
Pinner Station - 0.8 Miles
Headstone Lane - 1.0 Miles

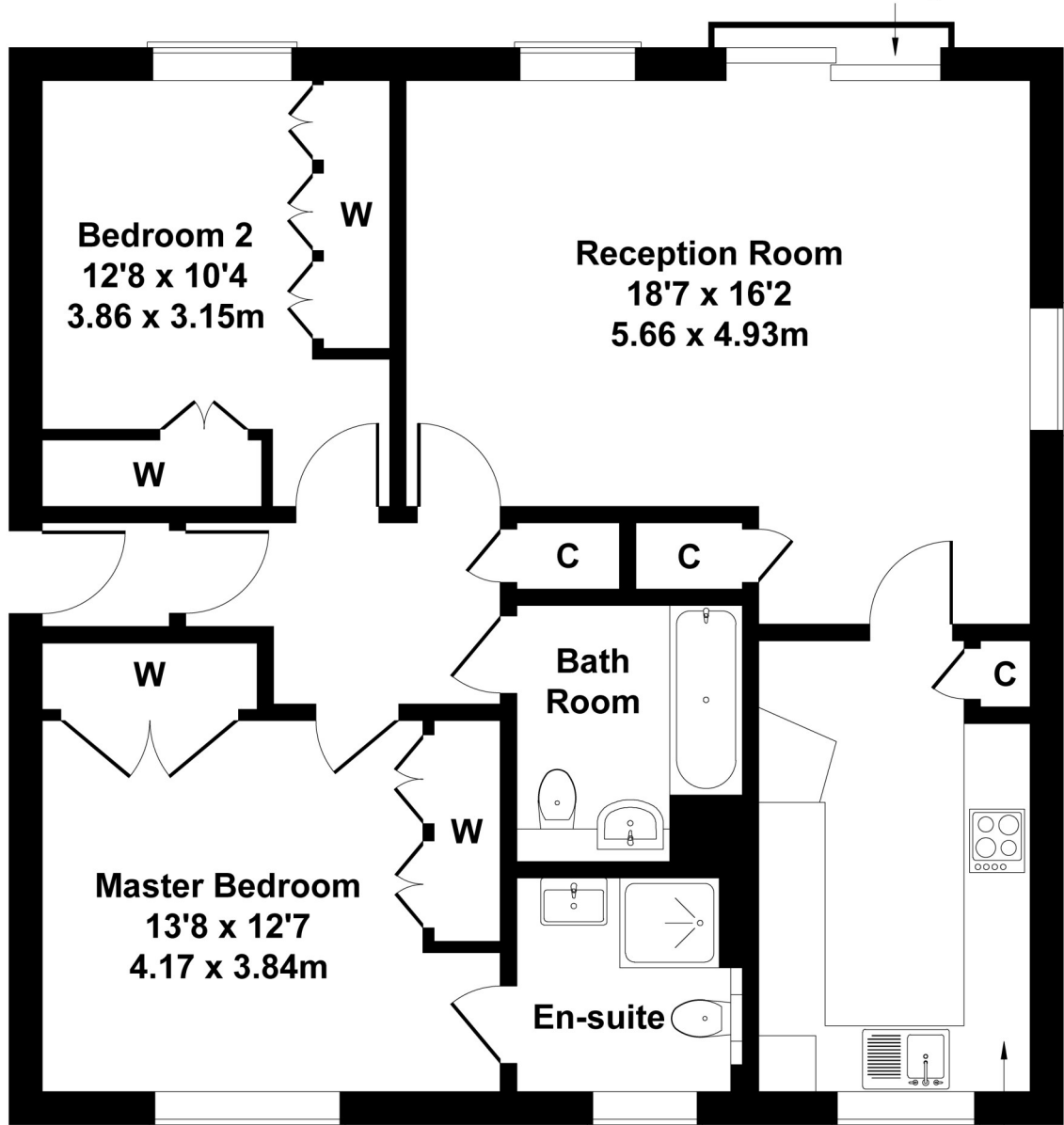




4 Churchill Court

Approximate Gross Internal Area
883 sq ft - 82 sq m

Juliet Balcony



FIRST FLOOR

Not to Scale. Produced by The Plan Portal 2025

For Illustrative Purposes Only.

Kitchen

**13'5 x 8'1
4.09 x 2.46m**

For appointments to view please call David Charles 020 8866 0222

All measurements are taken manually and whilst every care is taken with their accuracy they must be considered approximate and should not be relied upon when purchasing carpets or furniture. No responsibility is taken for any error, omission or misunderstanding in these particulars which do not constitute an offer or contract. Services and appliances have not been tested and therefore no warranty is offered on their operational condition.