



PRICE GUIDE

£1,500,000

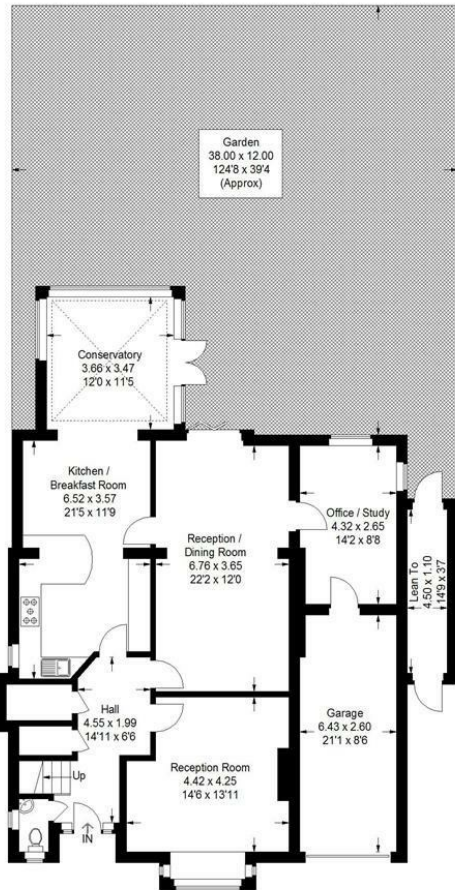
Lynwood Grove

Orpington, BR6 0BQ

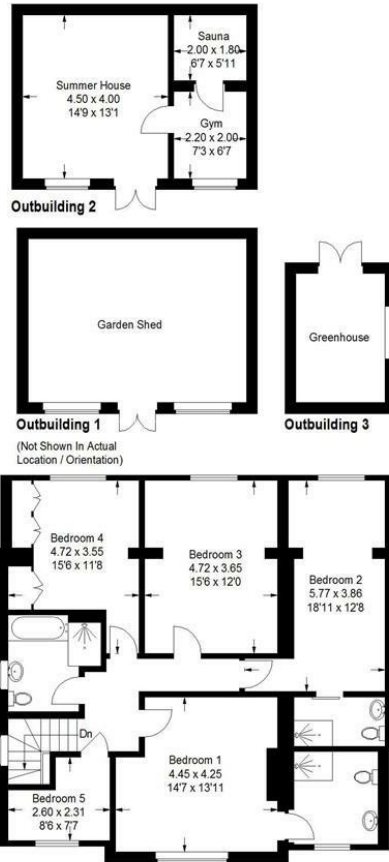
FINE & COUNTRY

Lynwood Grove, BR6

Approximate Gross Internal Area
(Including Garage / Excluding Lean To)
226.7 sq m / 2440 sq ft
Outbuilding = 62.4 sq m / 672 sq ft
Total = 289.1 sq m / 3112 sq ft

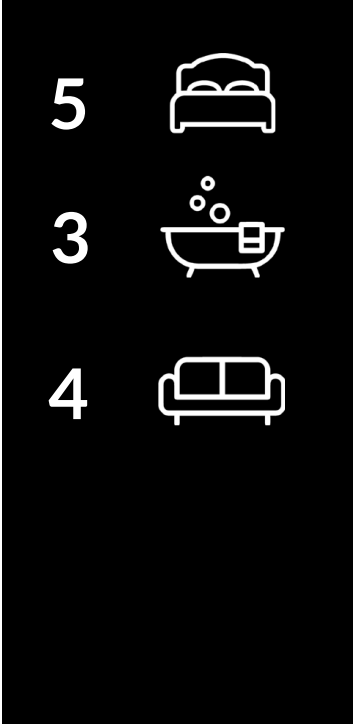


Ground Floor



First Floor

This plan is for layout guidance only. Not drawn to scale unless stated. Windows and door openings are approximate. Whilst every care is taken in the preparation of this plan, please check all dimensions, shapes and compass bearings before making any decisions reliant upon them. (ID1287175)



Energy Efficiency Rating		Current	Potential
Very energy efficient - lower running costs			
(92 plus)	A		
(81-91)	B		
(69-80)	C		
(55-68)	D		
(39-54)	E	58	71
(21-38)	F		
(1-20)	G		
Not energy efficient - higher running costs			
England & Wales		EU Directive 2002/91/EC	

Agents Note: Whilst every care has been taken to prepare these particulars, they are for guidance purposes only. All measurements are approximate and are for general guidance purposes only and whilst every care has been taken to ensure their accuracy, they should not be relied upon and potential buyers/tenants are advised to recheck the measurements



OFFICE ADDRESS
47B Great Guildford Street
London Bridge
SE1 0ES

OFFICE DETAILS
02076352063
southeastlondon@fineandcountry.
<https://www.fineandcountry.co.uk>