



**Price**  
**£290,000**

**Leasehold**

2x  1x  1x 

**Draper Court, Mavis  
Grove, Hornchurch,  
Essex, RM12**



## Main features

- **First floor retirement purpose built flat**
- **En-suite to bedroom 1**
- **Spacious lounge/diner**
- **Well kept communal gardens**
- **Communal lounge and laundry facilities**
- **Situated close to Hornchurch High Street**

## Accommodation

### FIRST FLOOR

Hallway

Bathroom: 6'8 x 5'6 (2.03m x 1.68m)

Lounge/Dining Room: 17'8 x 15'8 (5.39m x 4.78m)

Kitchen: 7'7 x 6'2 (2.31m x 1.88m)

Bedroom 1: 14'0 maximum x 13'0 (4.27m x 3.97m)

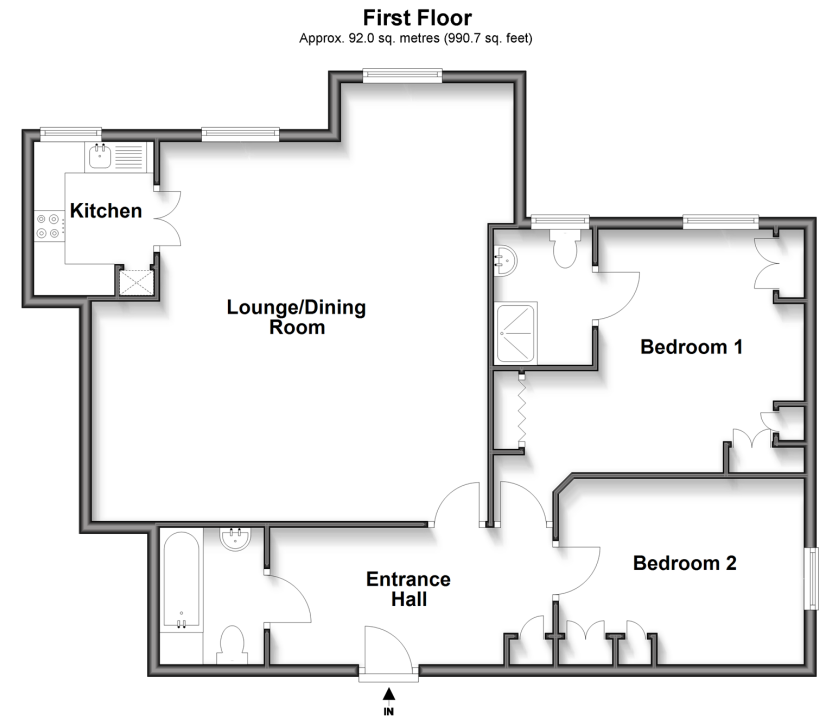
En-Suite: 7'3 x 5'2 (2.21m x 1.58m)

Bedroom 2: 12'8 x 9'7 (3.86m x 2.92m)

### OUTSIDE

Residential Parking

Communal Garden



**Call Hornchurch - 01708 437777 ■ [douglasallen.co.uk](http://douglasallen.co.uk)**

- A private rental licensing scheme applies to some properties in this area, please contact us before proceeding
- Appliances & services are untested, dimensions are approximate and floor plans are not to scale

■ Legal advice should be taken to verify fixtures/fittings, planning, alterations and/or lease details



51915682/20250805/CC1/DT