

Windsor Court

CHELSEA SW3 3TB

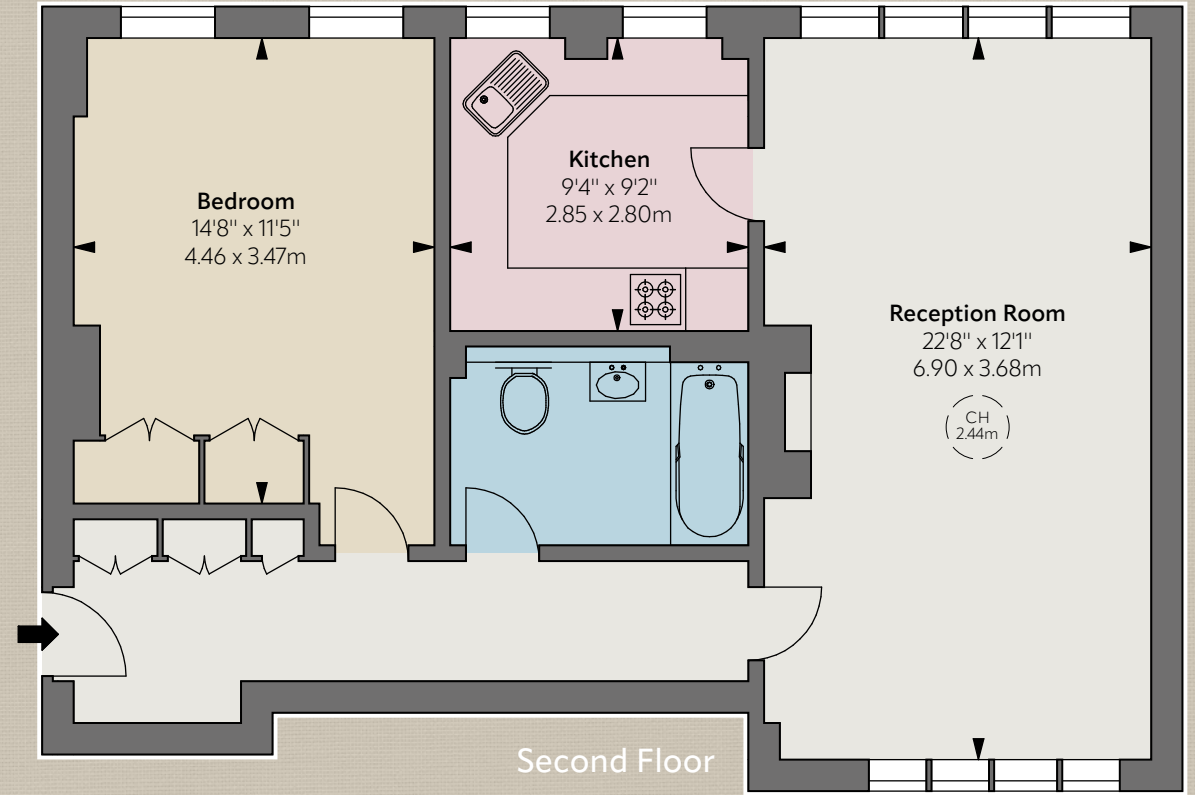


This flat is arguably one of the most spacious one-bedroom units in this well-known 1930s portered block. It is situated at the northern end of Jubilee Place and overlooking the recently restored and landscaped "Chelsea Green" from the second floor. The area is widely considered to be one of the most charming locations in Chelsea with its neighbourly atmosphere and local shops.



Accommodation & Amenities

- Entrance hall
- Bedroom
- Bathroom
- Kitchen
- Reception room
- Lift
- Caretaker



Approximate Gross Internal Area
719 sq ft / 66.80 sq m

CH: Ceiling height

Floorplan for guidance only, not to scale or for valuations purposes. It must not be relied upon as a statement of fact. All measurements and areas are approximate and have been prepared in accordance with the current edition of the RICS Code of Measuring Practice.

© Alex Winship Photography Ltd.

Terms

Tenure: Leasehold: 121 years, expires 20/12/2147

Ground Rent: Peppercorn

Service Charge: 6% of total outgoings.

Approximately £9,549 per annum for year ending 24/03/2027 including reserve fund

Local Authority: Kensington and Chelsea

Council Tax: Band F

EPC: Rating C

Guide Price: £975,000