



## Newcastle Close, Weston Heights, Stevenage, SG1 4TL

PEACEFULLY LOCATED and SPACIOUS One Bedroom Home located in Weston Heights with a Two Allocated Spaces in Need Of Full Modernisation. Features include, KITCHEN/BREAKFAST AREA, Lounge Area, Spacious Bedroom, Bathroom, Rear Garden, NO ONWARD CHAIN.

£215,000

# Newcastle Close, Weston Heights, Stevenage, SG1 4TL



- Peacefully Located and Spacious One Bedroom Home
- Requiring Full Modernisation
- Bathroom
- Electric Heating
- Located in Weston Heights
- Kitchen/Breakfast Area
- Rear Garden
- Two Allocated Parking Spaces
- Spacious Bedroom
- No Onward Chain

## Entrance Hallway

2'8 x 3'10 (0.81m x 1.17m)

## Lounge

11'10 x 11'9 (3.61m x 3.58m)

## Kitchen/Breakfast Room

5'7 x 11'8 (1.70m x 3.56m )

## Landing

2'11 x 5'11 (0.89m x 1.80m)

## Bedroom

11'2 x 11'11 (3.40m x 3.63m)

## Bathroom

6'1 x 5'6 (1.85m x 1.68m )

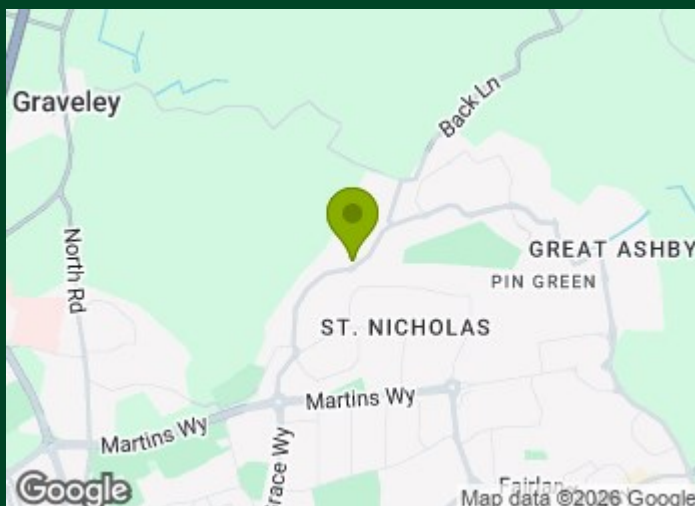
## Rear Garden

## Two Allocated Parking Spaces

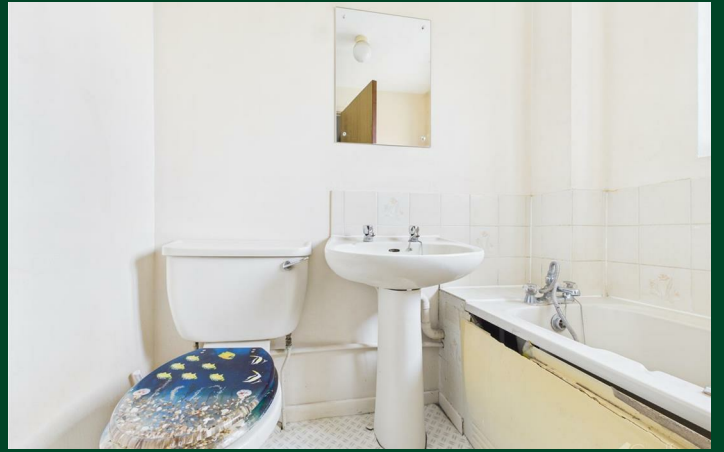
Two Space to the front of the property,

## Local Information

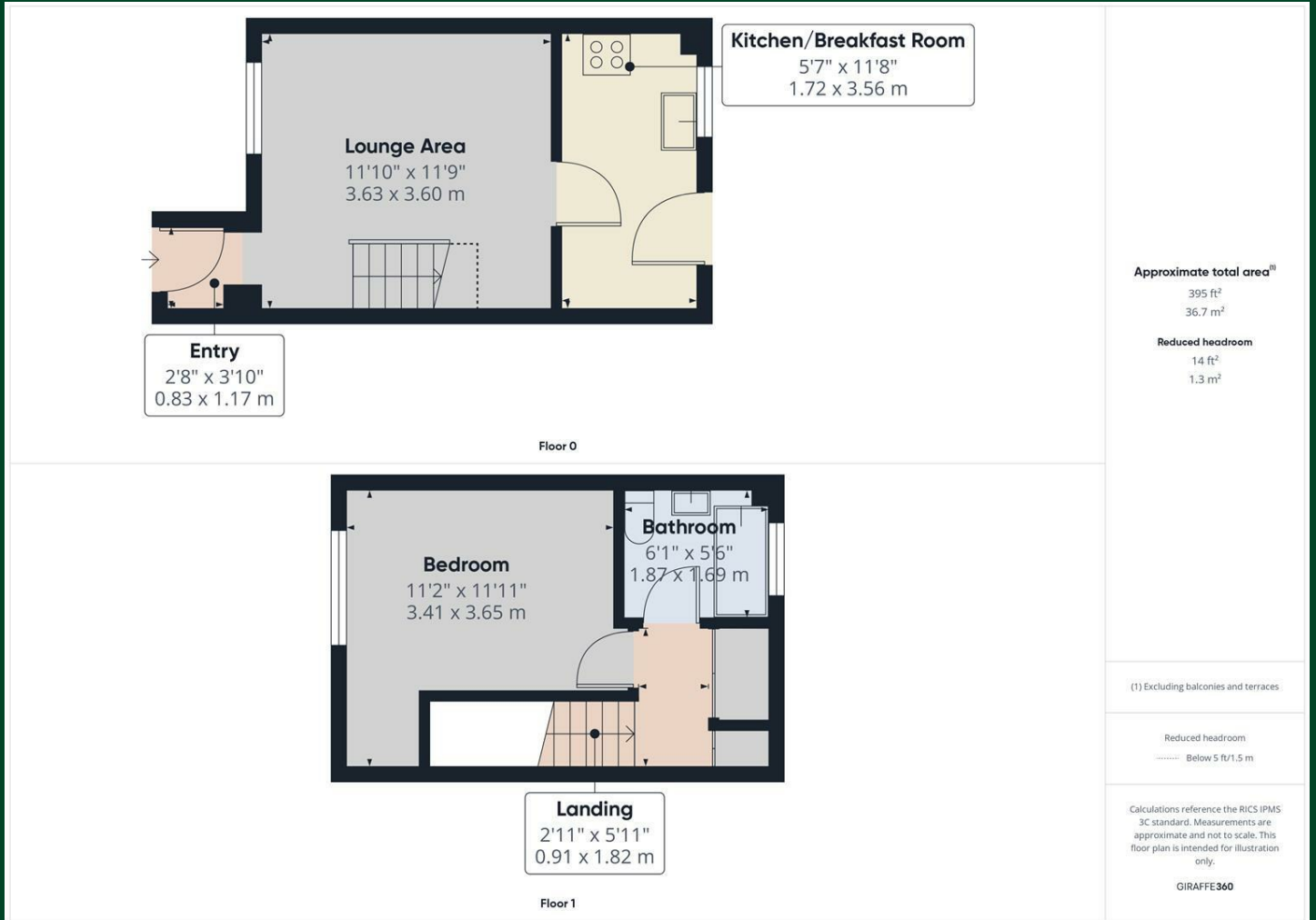
Newcastle Close is located close to Weston Heights which is a highly regarded private area build in the late 1990's.



## Directions



# Floor Plan



## Council Tax Details

Band

These particulars, whilst believed to be accurate are set out as a general outline only for guidance and do not constitute any part of an offer or contract. Intending purchasers should not rely on them as statements of representation of fact, but must satisfy themselves by inspection or otherwise as to their accuracy. No person in this firm's employment has the authority to make or give any representation or warranty in respect of the property.

