



3 The Foundry

Castle Eden, Hartlepool, TS27 4SQ

Offers In The Region Of £189,950

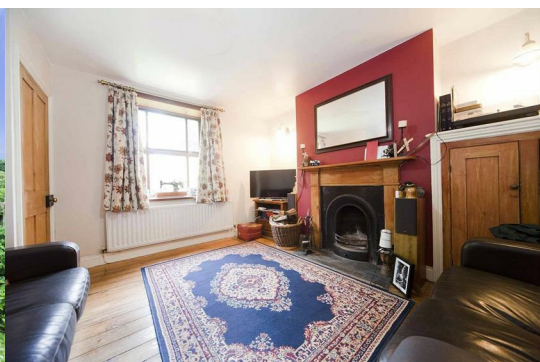


Nestled in the picturesque village of Castle Eden, Hartlepool, this stunning late Victorian terraced cottage offers a delightful blend of traditional charm and rural living. With two inviting reception rooms, this home is perfect for both relaxation and entertaining. The open plan kitchen diner seamlessly connects to the family lounge, where a cosy open fire creates a warm and inviting atmosphere, ideal for those chilly evenings.

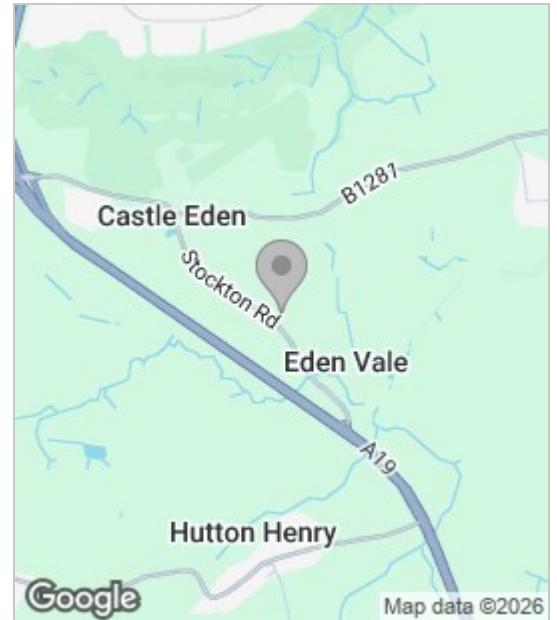
The property boasts two well-proportioned bedrooms, providing ample space for rest and rejuvenation. The larger than average shower room adds a touch of luxury, ensuring your daily routines are both comfortable and convenient.

Step outside to discover charming views over the rear, where a detached garage and a lovely seating area overlook the tranquil fields, offering a perfect spot for enjoying the serene surroundings. This outdoor space is ideal for alfresco dining or simply unwinding in the fresh air.

The Foundry was built Circa late 1800's housing workers for Ironworks & shipbuilding. They were accompanied by large front gardens creating a serene setting with agricultural fields surrounding.



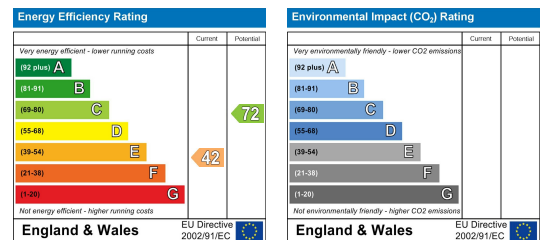
Area Map



Floor Plan



Energy Efficiency Graph



These particulars, whilst believed to be accurate are set out as a general outline only for guidance and do not constitute any part of an offer or contract. Intending purchasers should not rely on them as statements of representation of fact, but must satisfy themselves by inspection or otherwise as to their accuracy. No person in this firm's employment has the authority to make or give any representation or warranty in respect of the property.